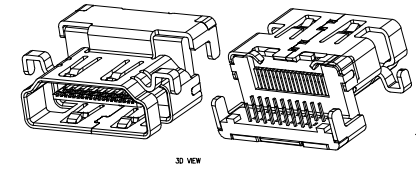
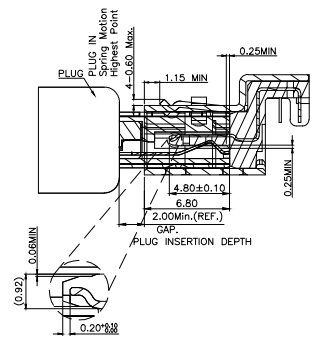
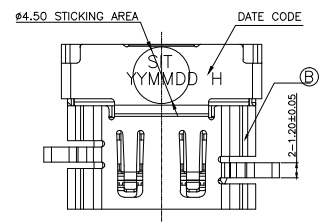
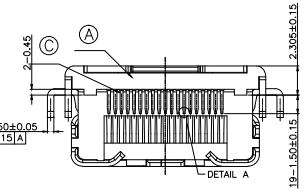
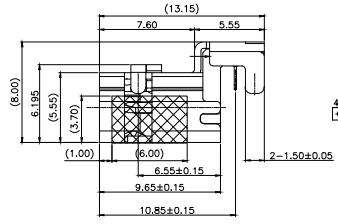
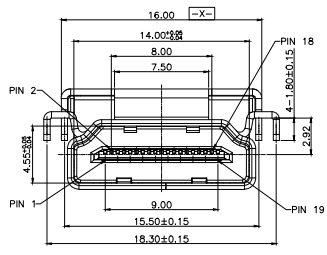


REV.	ECN NO OR DESCRIPTION	REVISED	DATE
A	PDR RELEASE	Even	2023.10.20



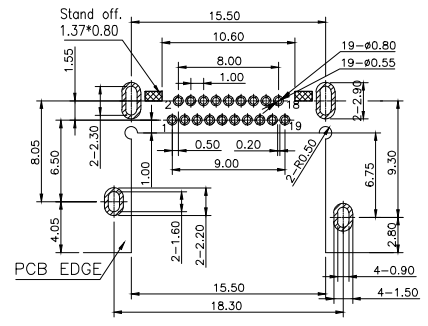
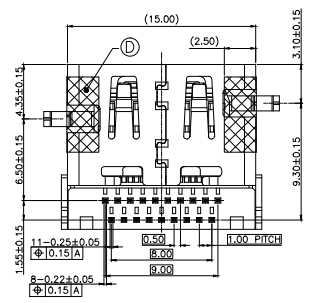
SPECIFICATIONS:

- ELECTRICAL CHARACTERISTICS:**
 - CURRENT RATING: 0.5 AMP.
 - VOLTAGE RATING: 40V.
 - CONTACT RESISTANCE: 30mΩ MAX.
 - INSULATION RESISTANCE: 100MΩ MIN. @ 500V DC.
 - DIELECTRIC WITHSTANDING VOLTAGE: 500V AC FOR 1 MINUTE.
- MECHANICAL CHARACTERISTICS:**
 - INSERTION FORCE: 4.5Kgf MAX.
 - WITHDRAWAL FORCE: 1.0~4.0Kgf.
- LIFE TEST: 10,000 CYCLES.
- OTHER GENERAL SPEC. TO REFER "HDMI SERIES SPEC".
- TO CONFORM TO THE SINGATRON HAZARDOUS SUBSTANCE FREE SPEC.
- HALOGEN FREE PRODUCT IDENTIFICATION LABEL ON PACKAGING:
- PACKAGE: SEE "2HE1781-001211F" PACKAGE.
- FOR REFLOW SOLDERING LEAD-FREE PROCESS.



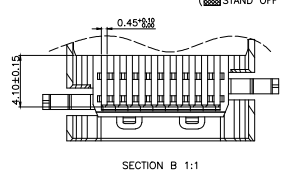
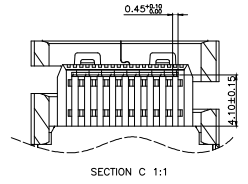
PART NO. 2HE1781-001211F

- SUFFIX: HALOGEN FREE
- PACKAGE: 1: TAPE AND REEL
- HOUSING COLOR: 1: BLACK
- CONTACT PLATING: 2: GOLD 30u" ON CONTACT AREA, MATTE TIN 75u" MIN. ON SOLDER AREA. 50u" MIN. NI UNDER PLATING OVERALL



RECOMMENDED PCB LAYOUT(TOP VIEW)
(THICKNESS=1.2±0.05mm)
(TOLERANCE=±0.05mm)

▨ PAD AREA
▨ STAND OFF AREA 禁止露件



D	MYLAR	2		YELLOW
C	CONTACT	19	C2680	SEE PART NO.
B	SHELL	1	SUS 304	50u" MIN. NICKEL
A	HOUSING	1	LCP UL 94V-0	BLACK
NO	DESCRIPTION	QTY	MATERIAL	PLATING & COLOR

UNLESS OTHERWISE SPECIFIED TOLERANCES		信音科技(香港)有限公司		
DECIMALS:	ANGLES:	TITLE	HDMI A TYPE FEMALE, REVERSE, DIP, CH=-2.92(HDMI 1.1)	
X :±0.5	X :±2°	DWN	ENEN 2023.10.20	PART NO. 2HE1781-001211F
X.X :±0.3	X.X :±1°	CHKD	SCALE2.5:1	UNIT: mm
X.XX :±0.2		APVD	TERES42023.10.20	SIZE: A3 SHEET:1 OF 1 REV:A
CUSTOMER COPY				