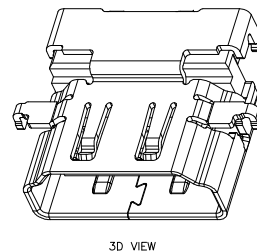
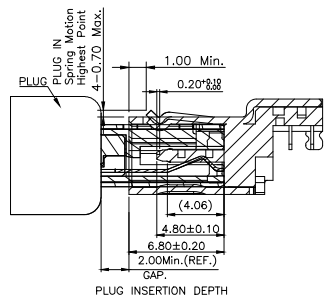
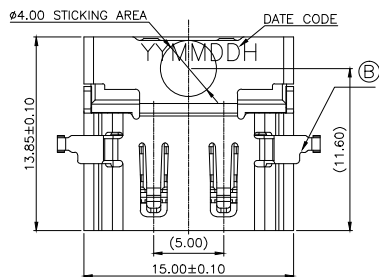

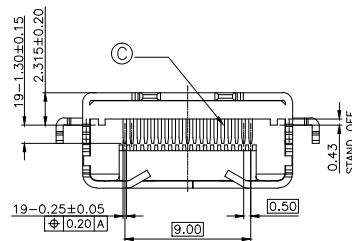
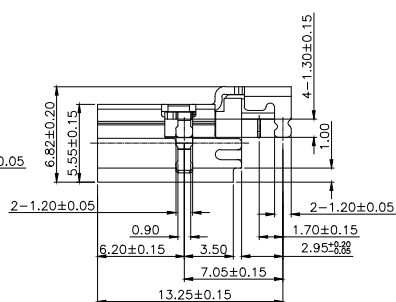
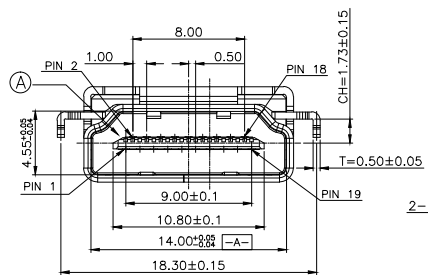


REV.	ECN NO OR DESCRIPTION	REVISED	DATE
A	PDR RELEASE	Even	2023.11.14
B	ECN NO: L202402-C04	Even	2024.03.05



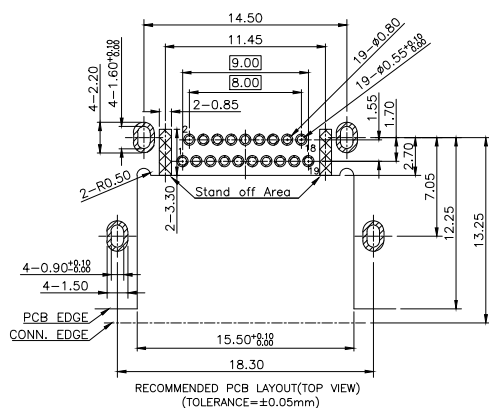
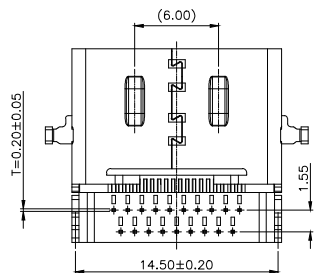
SPECIFICATIONS: (HDMI A TYPE)

- ELECTRICAL CHARACTERISTICS:
 - CURRENT RATING: 0.5 AMP.
 - VOLTAGE RATING: 40V.
 - INITIAL CONTACT RESISTANCE EXCLUDING CONDUCTOR RESISTANCE: 10mΩ MAX. (TARGET DESIGN VALUE). AFTER TEST: Δ30mΩ MAX.
 - INSULATION RESISTANCE: 100MΩ MIN. @ 500V DC.
 - DIELECTRIC WITHSTANDING VOLTAGE: 500V AC FOR 1 MINUTE.
- MECHANICAL CHARACTERISTICS:
 - INSERTION FORCE: 4.5Kgf MAX.
 - WITHDRAWAL FORCE: 1.0~4.0Kgf.
- LIFE TEST: 10,000 CYCLES.
- OTHER GENERAL SPEC. TO REFER "HDMI SERIES SPEC".
- TO CONFORM TO THE SINGATRON HAZARDOUS SUBSTANCE FREE SPEC.
- HALOGEN FREE PRODUCT IDENTIFICATION LABEL ON PACKAGING: 
- PACKAGE: SEE "2HE1782-310111F" PACKAGE.
- FOR IR - REFLOW LEAD-FREE PROCESS 260° 10s Min.



PART NO.
2HE1782-310111F

- SUFFIX: HALOGEN FREE
- PACKAGE: 1: TAPE AND REEL
- HOUSING COLOR: 1: BLACK
- CONTACT PLATING: 1: GOLD FLASH(1u"Min) ON CONTACT AREA, MATTE TIN 60~150u" ON SOLDER AREA, 50u" MIN. NI UNDER PLATING OVERALL



C	CONTACT	19	C2680	SEE PART NO.
B	SHELL	1	SUS 304	50u" MIN.NICKEL
A	HOUSING	1	LCP UL 94V-0	BLACK
NO	DESCRIPTION	QTY	MATERIAL	PLATING & COLOR

UNLESS OTHERWISE SPECIFIED TOLERANCES



Singatron Enterprise Co., Ltd.
信音企業股份有限公司

DECIMALS: X :±0.5
X.X :±0.3
X.XX :±0.2

ANGLES: X :±2°
X.X :±1°

TITLE	HDMI A TYPE FEMALE, REVERSE, DIP, CH=-1.73(HDMI 2.1)		
DWN	EVEN 2024.03.05	PART NO.	2HE1782-310111F
CHKD		SCALE	2.5:1
APVD	VERSA02024.03.05	UNIT:	mm
		SIZE:	A3
		SHEET:	1 OF 1
		REV:	B

CUSTOMER COPY