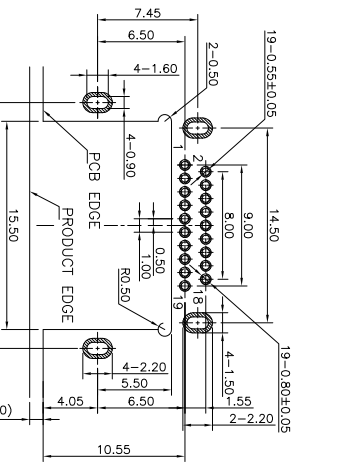
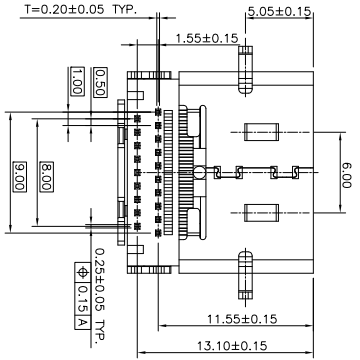
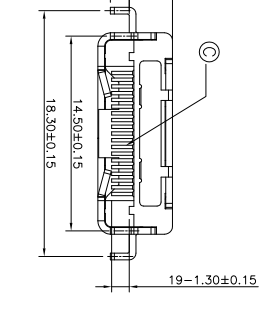
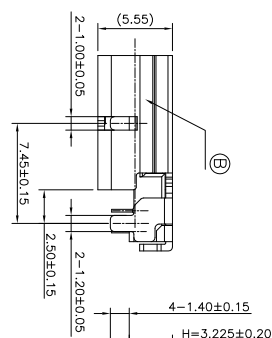
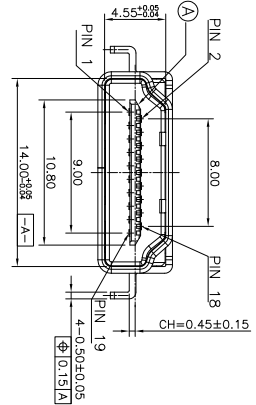
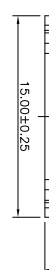
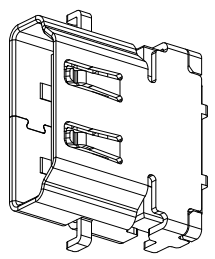
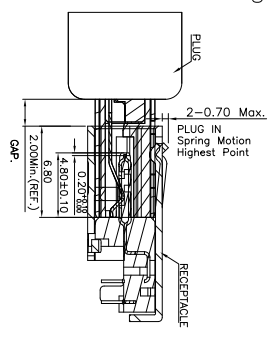
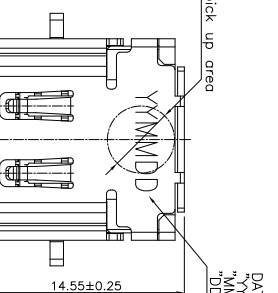


REV.	ECN NO OR DESCRIPTION	REVISED	DATE
A	PDR RELEASE	Even	2021.03.29

DATE CODE: YYMMDD  
 "YY": YEAR  
 "MM": MONTH  
 "DD": DAY



RECOMMENDED PCB LAYOUT(TOP VIEW)  
 (DEFAULT DIMENSION TOL=±0.05mm)  
 (THICKNESS=1.0±0.10mm)  
 "STAND-OFF AREA"

- SPECIFICATIONS: (HDMI A TYPE)
- ELECTRICAL CHARACTERISTICS:
    - CURRENT RATING: 0.5 AMP.
    - VOLTAGE RATING: 40V.
    - INITIAL CONTACT RESISTANCE EXCLUDING CONDUCTOR RESISTANCE: 10mΩ MAX. (TARGET DESIGN VALUE). AFTER TEST: <math>\Delta</math>30mΩ MAX.
    - INSULATION RESISTANCE: 100MΩ MIN @ 500V DC.
    - DIELECTRIC WITHSTANDING VOLTAGE: 500V AC FOR 1 MINUTE.
  - MECHANICAL CHARACTERISTICS:
    - INSERTION FORCE: 4.5kgf MAX.
    - WITHDRAWAL FORCE: 1.0~4.0kgf.
  - LIFE TEST: 10,000 CYCLES.
  - OTHER GENERAL SPEC. TO REFER "2HE1783-200411F SPEC."
  - TO CONFORM TO THE SINGATRON HAZARDOUS SUBSTANCE FREE SPEC.
  - HALOGEN FREE PRODUCT IDENTIFICATION LABEL ON PACKAGING.
  - PACKAGE: SEE "2HE1783-200411F" PACKAGE.
  - FOR REFLOW SOLDERING LEAD-FREE PROCESS.

PART NO.  
**2HE1783-200411F**

- SUFFIX: HALOGEN FREE
- PACKAGE
- TAPE AND REEL
- HOUSING COLOR
- 1: BLACK
- CONTACT PLATING

4: 3u" GOLD ON CONTACT AREA,  
 MATTE TIN 60~150u" ON SOLDER AREA.  
 50u" MIN. NI UNDER PLATING OVERALL

HDMI TYPE A PIN ASSIGNMENT

Pin	Signal Assignment
1	TMDS Data2+
2	TMDS Data2- Shield
3	TMDS Data2+
4	TMDS Data2+
5	TMDS Data2- Shield
6	TMDS Data1-
7	TMDS Data1-
8	TMDS Data0- Shield
9	TMDS Data0-
10	TMDS Data0+
11	TMDS Data0- Shield
12	TMDS Data0+
13	CEC
14	Utility
15	SCD
16	SMA
17	DDC/CEC Ground
18	+5V Power
19	Hot Plug Detect

C	CONTACT	19	C2680	SEE PART NO.
B	SHELL	1	SUS 304	50u" MIN. NICKEL
A	HOUSING	1	LCP UL 94V-0	BLACK
NO	DESCRIPTION	QTY	MATERIAL	PLATING & COLOR
UNLESS OTHERWISE SPECIFIED TOLERANCES				
DECIMALS: ANGLES:				
X : ±0.5 X : ±.2°				
X.X : ±0.3 X.X : ±.1°				
X.XX : ±0.2				

信音科技(香港)有限公司

TITLE	HDMI A TYPE FEMALE, REVERSE, DIP, CH=0.45
DWN	020210329
CHKD	SCALE 2.5:1 UNIT: mm
APVD	SIZE: A3 SHEET: 1 OF 1 REV: A
CUSTOMER COPY	

