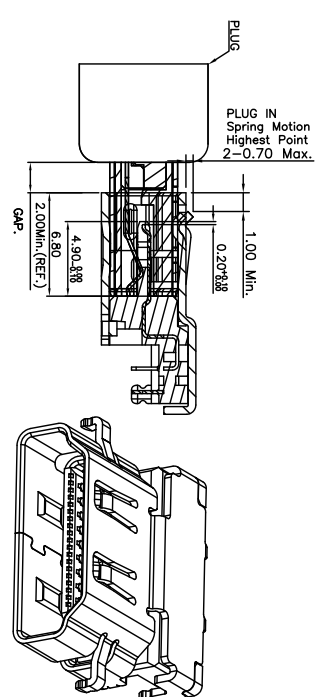
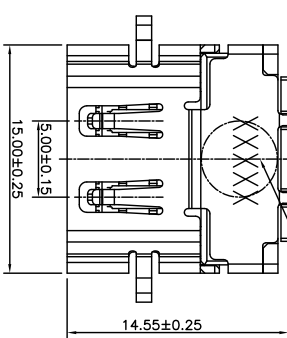
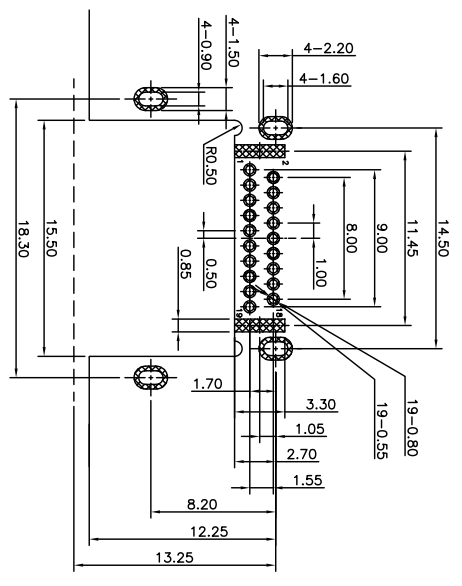
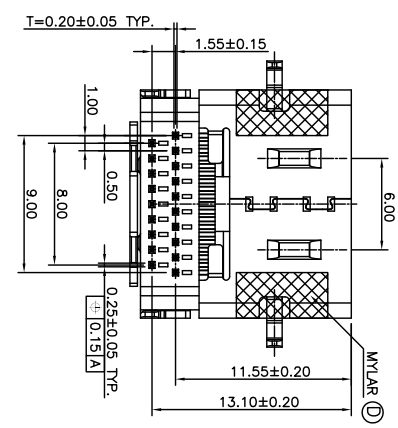
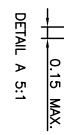
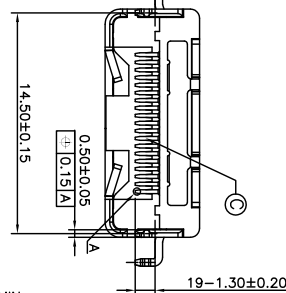
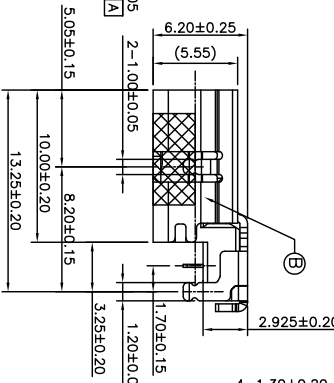
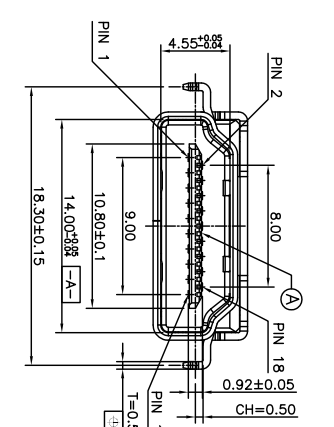


DATE CODE: YYMMDD
 YY: YEAR
 MM: MONTH
 DD: DAY



PLUG IN Spring Motion Highest Point 2~0.70 Max.

3D VIEW



RECOMMENDED PCB LAYOUT(TOP VIEW)
 (DEFAULT DIMENSION TOL.=±0.05mm)
 (THICKNESS=1.0±0.10mm)
 *STAND-OFF AREA

- SPECIFICATIONS: (HDMI A TYPE)
- ELECTRICAL CHARACTERISTICS:
 - CURRENT RATING: 0.5 AMP.
 - VOLTAGE RATING: 40V.
 - INITIAL CONTACT RESISTANCE EXCLUDING CONDUCTOR RESISTANCE: 10mΩ MAX. (TARGET DESIGN VALUE). AFTER TEST: Δ 30mΩ MAX.
 - INSULATION RESISTANCE: 100MΩ MIN. @ 500V DC.
 - DIELECTRIC WITHSTANDING VOLTAGE: 500V AC FOR 1 MINUTE.
 - MECHANICAL CHARACTERISTICS:
 - INSERTION FORCE: 4.5Kgf MAX.
 - WITHDRAWAL FORCE: 1.0~4.0Kgf.
 - LIFE TEST: 10,000 CYCLES.
 - OTHER GENERAL SPEC. TO REFER "HDMI SERIES SPEC".
 - TO CONFORM TO THE SINGATRON HAZARDOUS SUBSTANCE FREE SPEC.
 - HALOGEN FREE PRODUCT IDENTIFICATION LABEL ON PACKAGING.
 - PACKAGE: SEE "2HE1790-000111F" PACKAGE.
 - FOR REFLOW SOLDERING LEAD-FREE PROCESS.

PART NO.
2HE1790-000111F

- SUFFIX: HALOGEN FREE
- PACKAGE
- 1: TAPE AND REEL
- HOUSING COLOR
- 1: BLACK
- CONTACT PLATING
- 1: GOLD FLASH ON CONTACT AREA
- MATTE TIN 50U" MIN. ON SOLDER AREA
- 50U" MIN. NI UNDER PLATING OVERALL

D	MYLAR	2	YELLOW
C	CONTACT	19	C2680-H SEE PART NO.
B	SHELL	1	SUS304 50U" MIN. NICKEL
A	HOUSING	1	LCP UL 94V-0 BLACK
NO	DESCRIPTION	QTY	MATERIAL PLATING & COLOR

UNLESS OTHERWISE SPECIFIED TOLERANCES

DECIMALS:	ANGLES:	TITLE	HDMI A TYPE FEMALE DIP TYPE
X : ±0.5	X : ±2°	DWV	REV 2020/1/21
X X : ±0.3	X X : ±1°	SCALE:	1:1
X X X : ±0.2		UNIT:	mm
		APVD	AMEBA 2020/1/21
		SIZE:	A3
		SHEET:	1 OF 1
		REV:	A

Singatron Enterprise Co., Ltd.
 信音企業股份有限公司
CUSTOMER COPY