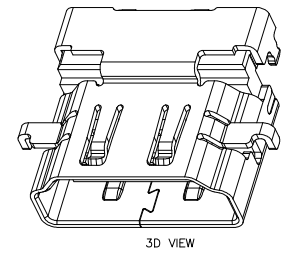
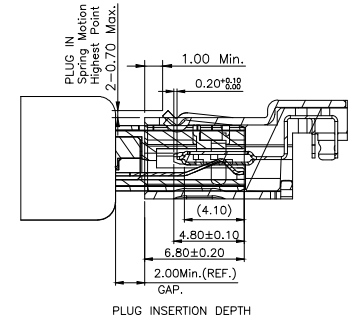
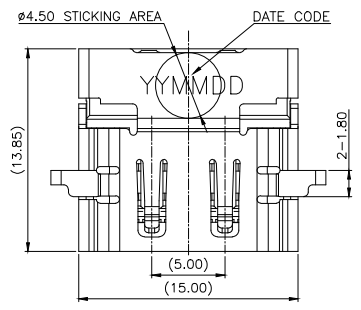

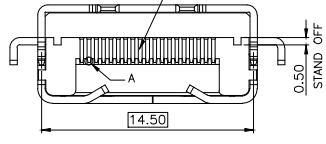
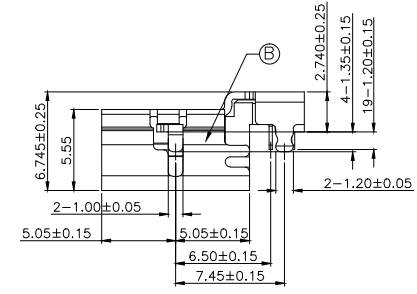
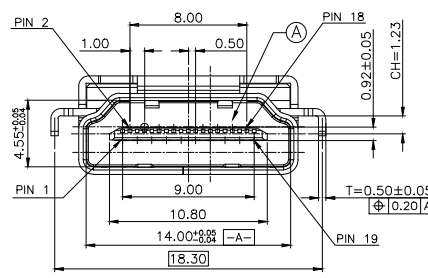


REV.	ECN NO OR DESCRIPTION	REVISED	DATE
A	PDR RELEASE	EVEN	2020.07.20
B	ECN NO: L202108-C03	EVEN	2022.01.11

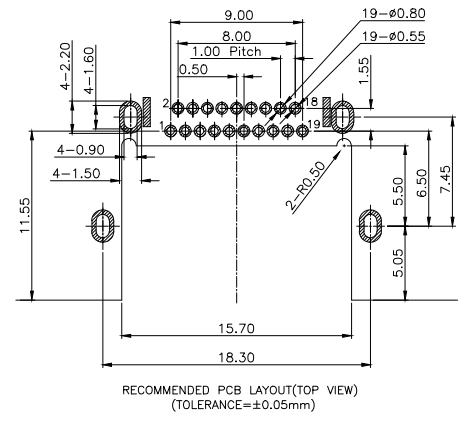
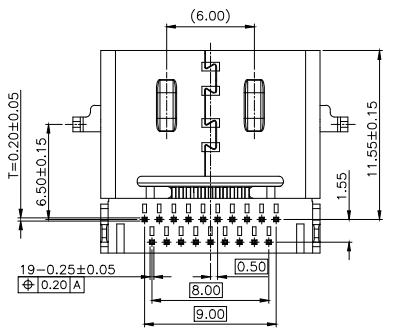


- SPECIFICATIONS: (HDMI A TYPE)
- ELECTRICAL CHARACTERISTICS:
 - CURRENT RATING: 0.5 AMP.
 - VOLTAGE RATING: 40V.
 - INITIAL CONTACT RESISTANCE EXCLUDING CONDUCTOR RESISTANCE: 10mΩ MAX. (TARGET DESIGN VALUE). AFTER TEST: Δ30mΩ MAX.
 - INSULATION RESISTANCE: 100MΩ MIN. @ 500V DC.
 - DIELECTRIC WITHSTANDING VOLTAGE: 500V AC FOR 1 MINUTE.
 - MECHANICAL CHARACTERISTICS:
 - INSERTION FORCE: 4.5Kgf MAX.
 - WITHDRAWAL FORCE: 1.0~4.0Kgf.
 - LIFE TEST: 10,000 CYCLES.
 - OTHER GENERAL SPEC. TO REFER "2HE1792-110111F SPEC".
 - TO CONFORM TO THE SINGATRON HAZARDOUS SUBSTANCE FREE SPEC.
 - HALOGEN FREE PRODUCT IDENTIFICATION LABEL ON PACKAGING: 
 - PACKAGE: SEE "2HE1792-110111F" PACKAGE.
 - FOR REFLOW SOLDERING LEAD-FREE PROCESS.



PART NO.
2HE1792-110111F

- SUFFIX: HALOGEN FREE
- PACKAGE: 1: TAPE AND REEL
- HOUSING COLOR: 1: BLACK
- CONTACT PLATING:
 - ▲ 1: GOLD FLASH(1~3u") ON CONTACT AREA, MATTE TIN 60~150u" ON SOLDER AREA. 50u" MIN. NI UNDER PLATING OVERALL



NO	DESCRIPTION	QTY	MATERIAL	PLATING & COLOR
C	CONTACT	19	BRASS ▲	SEE PART NO.
B	SHELL	1	STAINLESS STEEL ▲	50u" MIN. NICKEL
A	HOUSING	1	LCP UL 94V-0	BLACK

UNLESS OTHERWISE SPECIFIED TOLERANCES

DECIMALS:		ANGLES:		TITLE	HDMI A TYPE FEMALE, DIP TYPE
X	:±0.5	X	:±2°	DWN	EVEN 2022.01.22
X.X	:±0.3	X.X	:±1°	CHKD	SCALE 1:1 UNIT: mm
X.XX	:±0.2			APVD	ANGELA 2022.01.22

 信音科技(香港)有限公司

PART NO. **2HE1792-110111F**

SCALE 1:1 UNIT: mm

SIZE: A3 SHEET: 1 OF 1

REV: B

CUSTOMER COPY