

| REV. | ECN NO OR DESCRIPTION | REVISED | DATE |
|------|-----------------------|---------|------------|
| A | PDR RELEASE | EVEN | 2020.12.29 |
| B | ECN NO: L202106-C01 | EVEN | 2021.07.20 |

SPECIFICATIONS: (HDMI A TYPE)

- ELECTRICAL CHARACTERISTICS:
 - CURRENT RATING: 0.5 AMP.
 - VOLTAGE RATING: 40V.
 - INITIAL CONTACT RESISTANCE EXCLUDING CONDUCTOR RESISTANCE: 10mΩ MAX. (TARGET DESIGN VALUE). AFTER TEST: Δ 30mΩ MAX.
 - INSULATION RESISTANCE: 100MΩ MIN. @ 500V DC.
 - DIELECTRIC WITHSTANDING VOLTAGE: 500V AC FOR 1 MINUTE.
- MECHANICAL CHARACTERISTICS:
 - INSERTION FORCE: 4.5Kgf MAX.
 - WITHDRAWAL FORCE: 1.0~4.0Kgf.
- LIFE TEST: 10,000 CYCLES.
- OTHER GENERAL SPEC. TO REFER "2HE1796-000111F SPEC".
- TO CONFORM TO THE SINGATRON HAZARDOUS SUBSTANCE FREE SPEC.
- HALOGEN FREE PRODUCT IDENTIFICATION LABEL ON PACKAGING:
- PACKAGE: SEE "2HE1796-000111F" PACKAGE.
- FOR REFLOW SOLDERING LEAD-FREE PROCESS.



PART NO.
2HE1796-000111F

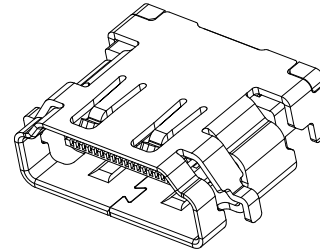
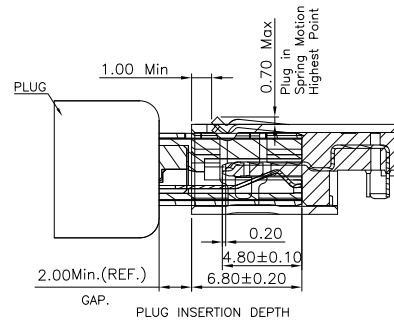
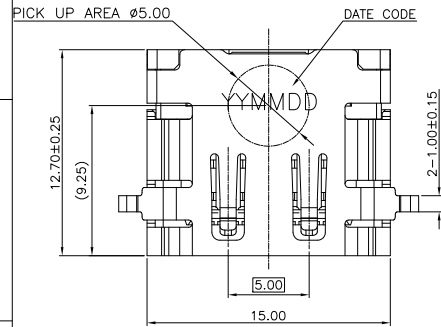
SUFFIX: HALOGEN FREE

PACKAGE
1: TAPE AND REEL

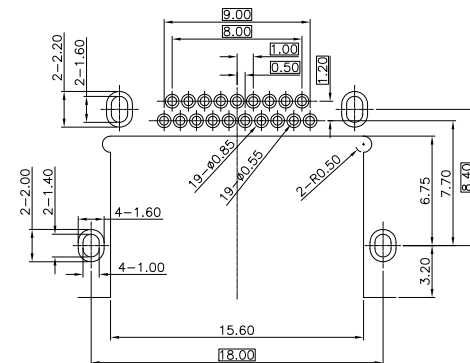
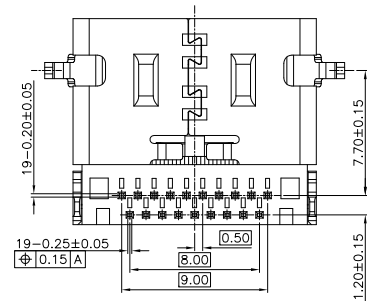
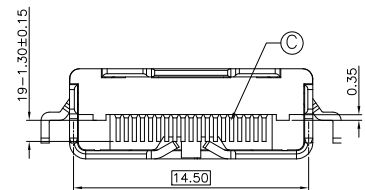
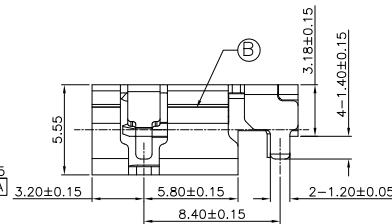
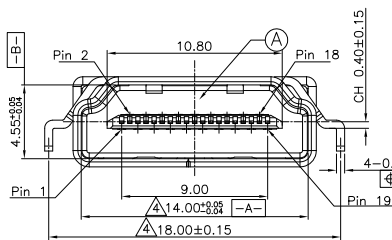
HOUSING COLOR
1: BLACK

CONTACT PLATING

Δ 1: 5u" GOLD ON CONTACT AREA,
MATTE TIN 60~150u" ON SOLDER AREA.
50u" MIN. NI UNDER PLATING OVERALL



3D VIEW



RECOMMENDED PCB LAYOUT (TOP VIEW)
(DEFAULT DIMENSION TOL = ±0.05mm)
(THICKNESS = 1.00 ± 0.10mm)

HDMI TYPE A PIN ASSIGNMENT

| PIN | Signal Assignment |
|-----|-------------------|
| 1 | TMDS Data2+ |
| 2 | TMDS Data2 Shield |
| 3 | TMDS Data2- |
| 4 | TMDS Data1+ |
| 5 | TMDS Data1 Shield |
| 6 | TMDS Data1- |
| 7 | TMDS Data0+ |
| 8 | TMDS Data0 Shield |
| 9 | TMDS Data0- |
| 10 | TMDS Clock+ |
| 11 | TMDS Clock Shield |
| 12 | TMDS Clock- |
| 13 | CEC |
| 14 | Utility |
| 15 | SCL |
| 16 | SDA |
| 17 | DDC/CEC Ground |
| 18 | +5V Power |
| 19 | Hot Plug Detect |

| C | CONTACT | 19 | C2680-H | SEE PART NO. |
|---|-------------|-----|--------------|------------------------|
| B | SHELL | 1 | SUS304 | 50u" MIN. BLACK NICKEL |
| A | HOUSING | 1 | LCP UL 94V-0 | BLACK |
| NO | DESCRIPTION | QTY | MATERIAL | PLATING & COLOR |
| UNLESS OTHERWISE SPECIFIED TOLERANCES | | | | |
| 信音科技(香港)有限公司 | | | | |
| DECIMALS: ANGLES: TITLE HDMI TYPE A FEMALE REVERSE DIP TYPE | | | | |
| DWN EVEN 2021.07.20 PART NO. 2HE1796-000111F | | | | |
| CHKD SCALE: 1:1 UNIT: mm | | | | |
| APVD ANGELA 2021.07.20 SIZE: A3 SHEET: 1 OF 1 REV: B | | | | |
| CUSTOMER COPY | | | | |