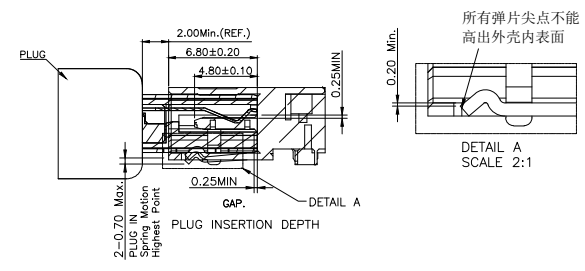
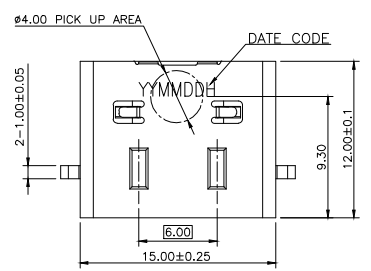
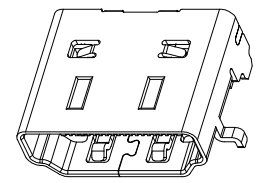
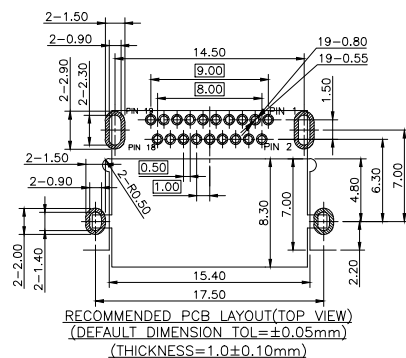
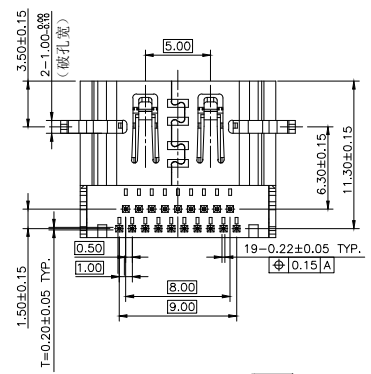
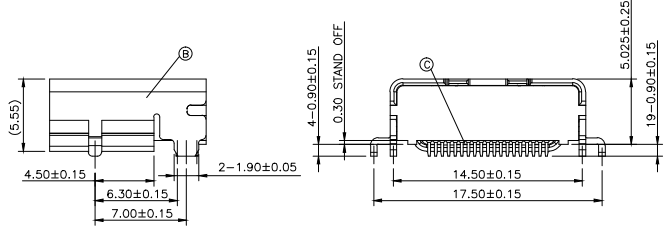
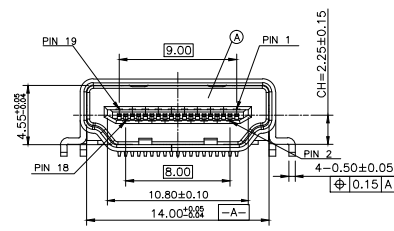


REV.	ECN NO OR DESCRIPTION	REVISED	DATE
A	PDR RELEASE	EVEN	2024.01.10



- SPECIFICATIONS: (HDMI A TYPE)
- ELECTRICAL CHARACTERISTICS:
    - CURRENT RATING: 0.5 AMP.
    - VOLTAGE RATING: 40V.
    - INITIAL CONTACT RESISTANCE EXCLUDING CONDUCTOR RESISTANCE: 10mΩ MAX. (TARGET DESIGN VALUE). AFTER TEST: Δ30mΩ MAX.
    - INSULATION RESISTANCE: 100MΩ MIN. @ 500V DC.
    - DIELECTRIC WITHSTANDING VOLTAGE: 500V AC FOR 1 MINUTE.
  - MECHANICAL CHARACTERISTICS:
    - INSERTION FORCE: 4.5Kgf MAX.
    - WITHDRAWAL FORCE: 1.0~4.0Kgf.
  - LIFE TEST: 10,000 CYCLES.
  - OTHER GENERAL SPEC. TO REFER "HDMI SERIES SPEC".
  - TO CONFORM TO THE SINGATRON HAZARDOUS SUBSTANCE FREE SPEC.
  - HALOGEN FREE PRODUCT IDENTIFICATION LABEL ON PACKAGING:
  - PACKAGE: SEE "2HE1805-000211F" PACKAGE.
  - FOR REFLOW SOLDERING LEAD-FREE PROCESS.



PART NO.  
2HE1805-000211F

- SUFFIX: HALOGEN FREE
- PACKAGE: 1: TAPE AND REEL
- HOUSING COLOR: 1: BLACK
- CONTACT PLATING: 2: GOLD FLASH(1~3u") ON CONTACT AREA, MATTE TIN 75u" MIN. ON SOLDER AREA. 50u" MIN. NI UNDER PLATING OVERALL

PIN	Signal Assignment
1	TMS Data2+
2	TMS Data2 Shield
3	TMS Data2-
4	TMS Data1+
5	TMS Data1 Shield
6	TMS Data1-
7	TMS Data0+
8	TMS Data0 Shield
9	TMS Data0-
10	TMS Clock+
11	TMS Clock Shield
12	TMS Clock-
13	CEC
14	Utility
15	SCL
16	SDA
17	DDC/CEC Ground
18	+5V Power
19	Hot Plug Detect

C	CONTACT	19	C2680-H	SEE PART NO.
B	SHELL	1	SUS304	50u" MIN.NICKEL
A	HOUSING	1	LCP UL 94V-0	BLACK
NO	DESCRIPTION	QTY	MATERIAL	PLATING & COLOR
UNLESS OTHERWISE SPECIFIED TOLERANCES				
信音科技(香港)有限公司				
DECIMALS: ANGLES:				
TITLE: HDMI TYPE A FEMALE DIP TYPE				
DWN	EVEN 2024.01.10	PART NO. 2HE1805-000211F		
CHKD		SCALE:1:1	UNIT: mm	
APVD	TERESA2024.01.10	SIZE: A3	SHEET: 1 OF 1	REV:A
CUSTOMER COPY				