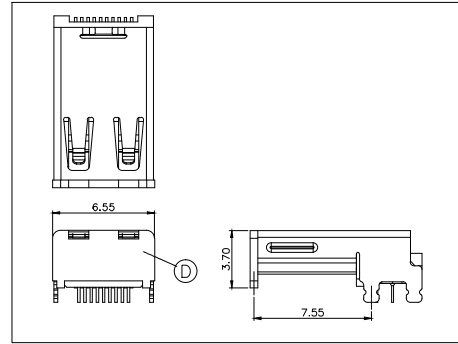
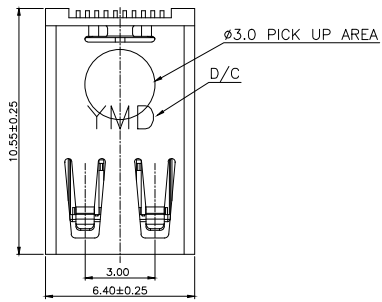
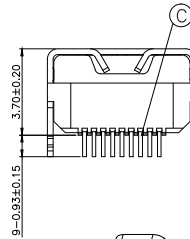
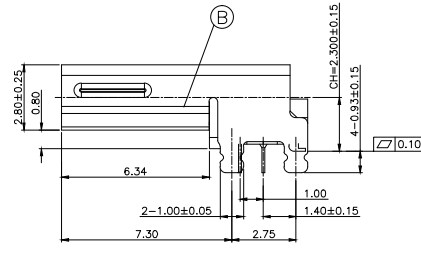
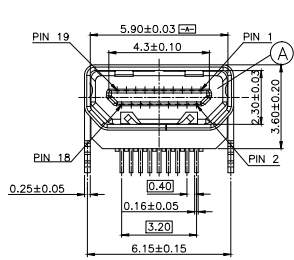


REV.	ECN NO OR DESCRIPTION	REVISED	DATE
A	PDR RELEASE	EVEN	2023.05.15

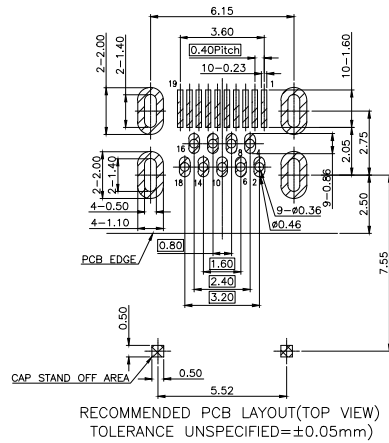
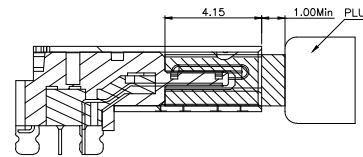
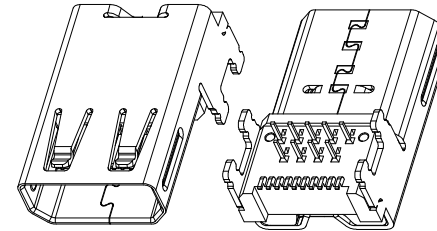


- SPECIFICATIONS:**
- ELECTRICAL CHARACTERISTICS:**
    - CURRENT RATING: 0.3 AMP.
    - VOLTAGE RATING: 40V.
    - CONTACT RESISTANCE: 30mΩ MAX.
    - INSULATION RESISTANCE: 100MΩ MIN. @ 500V DC.
    - DIELECTRIC WITHSTANDING VOLTAGE: 250V AC FOR 1 MINUTE.
  - MECHANICAL CHARACTERISTICS:**
    - INSERTION FORCE: 4.5Kgf MAX.
    - WITHDRAWAL FORCE: 0.5~2.5Kgf.
  - LIFE TEST: 5,000 CYCLES**
  - OTHER GENERAL SPEC. TO REFER "HDMI SERIES SPEC".**
  - TO CONFORM TO THE SINGATRON HAZARDOUS SUBSTANCE FREE SPEC.**
  - HALOGEN FREE PRODUCT IDENTIFICATION LABEL ON PACKAGING:**
  - PACKAGE: SEE "2HE1822-100111F" PACKAGE.**
  - FOR REFLOW SOLDERING LEAD-FREE PROCESS.**



**PART NO.**  
**2HE1822-100111F**

- SUFFIX: HALOGEN FREE
- PACKAGE: 1: TAPE AND REEL
- HOUSING COLOR: 1: BLACK
- CONTACT PLATING: 1: GOLD FLASH(1~3u") ON CONTACT AREA, GOLD FLASH(1~3u") ON SOLDER AREA. 50u" MIN. NI UNDER PLATING OVERALL



D	CAP	1	LCP UL 94V-0	BLACK
C	CONTACT	19	C5191	SEE PART NO.
B	SHELL	1	SUS304	50u" MIN. NICKEL
A	HOUSING	1	LCP UL 94V-0	BLACK
NO	DESCRIPTION	QTY	MATERIAL	PLATING & COLOR
UNLESS OTHERWISE SPECIFIED TOLERANCES		信音科技(香港)有限公司		
DECIMALS:	ANGLES:	TITLE	HDMI TYPE D FEMALE (C/H:2.3mm)	
X :±0.5	X :±2°	DWN	EVEN 2023.05.15 <b>PART NO. 2HE1822-100111F</b>	
X.X :±0.3	X.X :±1°	CHKD	SCALE1:1	UNIT: mm
X.XX :±0.2		APVD	TERESA2023.05.15	SIZE: A3 SHEET:1 OF 1 <b>REV:A</b>
<b>CUSTOMER COPY</b>				