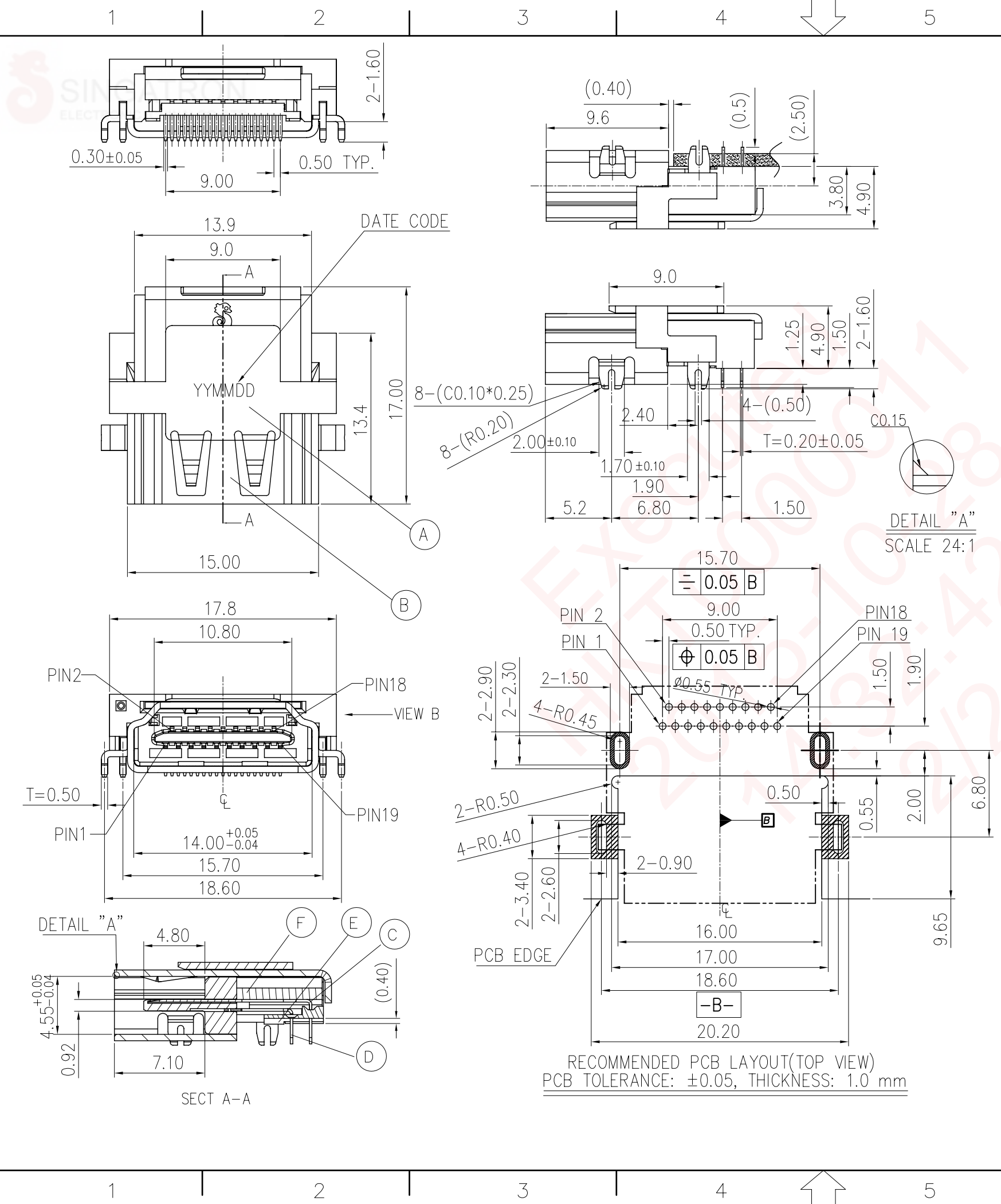


REV.	ECN NO OR DESCRIPTION	REVISED	DATE
A	PRODUCT RELEASE	Cheney	15.10.14



SPECIFICATIONS:

- ELECTRICAL CHARACTERISTICS:
 - RATING: 40V 0.5A
 - CONTACT RESISTANCE: 30mΩ MAX.(INITIAL)
 - DIELECTRIC WITHSTANDING VOLTAGE: 300V AC(RMS) (MATED); 500V AC(RMS) (UNMATED)
 - INSULATION RESISTANCE: 10MΩ MIN. MEASURED BY 150 VDC(MATED); 100MΩ MIN. MEASURED BY 500 VDC(UNMATED)
- MECHANICAL CHARACTERISTICS:
 - INSERTION FORCE : 4.5 KGF MAX.
 - WITHDRAWAL FORCE : INITIAL : 1.0~4.0KGF;FINAL : 0.3~4.0KG
- LIFE TEST: 10,000 CYCLES.
- TO CONFORM TO THE SINGATRON HAZARDOUS SUBSTANCE FREE SPEC.
- HALOGEN PRODUCT IDENTIFICATION MARK ON JACK: Ⓞ
- HALOGEN PRODUCT IDENTIFICATION LABEL ON PACKAGING
- FOR REFLOW SOLDERING LEAD-FREE PROCESS.
- DATE CODE: YYMMDD
 - Day
 - Month
 - Year



- PART NO. 2HE2000-002111F
 - PACKAGE: 1: TAPE & REEL
 - CONTACT PLATING: 2: GOLD FLASH ON MATING AREA. TIN ALLOY PLATING ON SOLDER TAILS, ALL OVER NICKEL PLATING.
 - BODY COLOR: 1: BLACK

NO	DESCRIPTION	QTY	MATERIAL	PLATING & COLOR
F	STOPPER	1	LCP+30%GF UL 94V-0	BLACK COLOR
E	SPACER	1	LCP+30%GF UL 94V-0	BLACK COLOR
D	LOWER CONTACT	10	COPPER ALLY 0.20t	GOLD FLASH ON MATING AREA, TIN ALLOY PLATING ON SOLDER TAIL, ALL OVER NICKEL PLATING
C	UPPER CONTACT	9		
B	SHELL	1	COPPER ALLY 0.50t	NICKEL PLATING
A	BODY	1	LCP+30%GF UL 94V-0	BLACK COLOR

UNLESS OTHERWISE SPECIFIED TOLERANCES

DECIMALS: X :±0.5 X.X :±0.3 X.XX :±0.2

ANGLES: X :±2° X.X :±1°

Singatron Enterprise Co., Ltd.
信音企業股份有限公司

TITLE: HDMI REVERSE SINKING TYPE

DWN: Nanlin-Chen 15/10/27 PART NO.: 2HE2000-002111F

CHKD: Qicai-Hu 15/10/27 SCALE 1:1 UNIT: mm

APVD: Ziz-Zhou 15/10/27 SIZE: A3 SHEET: 10F1 REV: A

CUSTOMER COPY

09:22:38 文件編號: RD-06-043-A