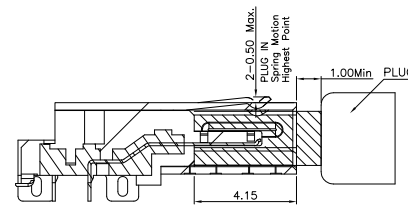
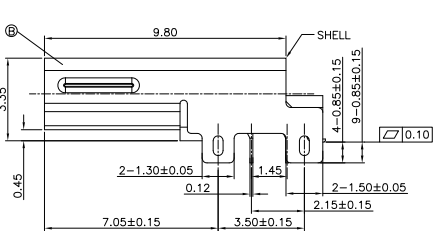
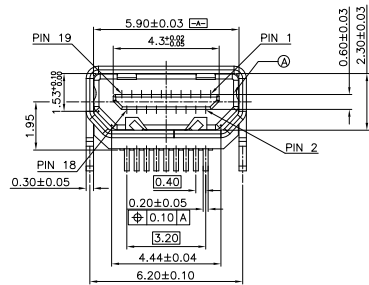
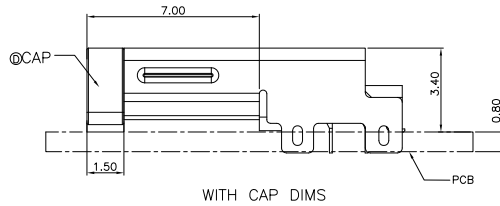
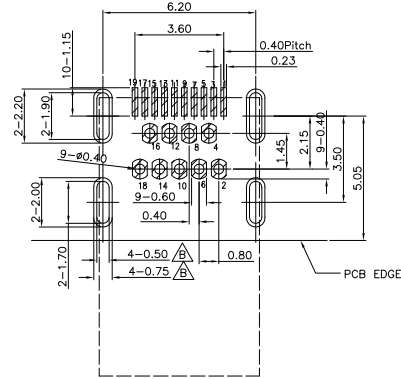
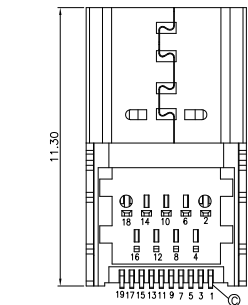


PIN	Signal Assignment	PIN	Signal Assignment
1	Hot Plug Detect	2	Utility
3	TMDS Data2+	4	TMDS Data2 Shield
5	TMDS Data2-	6	TMDS Data1+
7	TMDS Data1 Shield	8	TMDS Data1-
9	TMDS Data0+	10	TMDS Data0 Shield
11	TMDS Data0-	12	TMDS Clock+
13	TMDS Clock Shield	14	TMDS Clock-
15	CEC	16	DDC/CEC Ground
17	SCL	18	SDA
19	+5V Power		

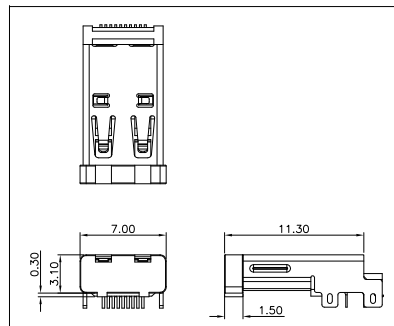


PART NO.
2HE2016-001211F

- SUFFIX: HALOGEN FREE
- PACKAGE: 1: TAPE & REEL
- HOUSING COLOR: 1: BLACK
- CONTACT PLATING: 2: GOLD FLASH PLATED ON CONTACT AREA, GOLD FLASH ON SOLDER TAILS



RECOMMENDED PCB LAYOUT(TOP VIEW)
TOLERANCE UNSPECIFIED=±0.05mm



REV.	ECN NO OR DESCRIPTION	REVISED	DATE
A	PDR RELEASE	EVEN	2020.02.24
B	ECN NO: L202103-C01	EVEN	2021.04.19

SPECIFICATIONS:

- ELECTRICAL CHARACTERISTICS:
 - CURRENT RATING: 0.3 AMP.
 - VOLTAGE RATING: 40V.
 - INITIAL CONTACT RESISTANCE EXCLUDING CONDUCTOR RESISTANCE: 10mΩ MAX (TARGET DESIGN VALUE). AFTER TEST: Δ 30mΩ MAX.
 - INSULATION RESISTANCE: 100MΩ MIN. @ 500V DC.
 - DIELECTRIC WITHSTANDING VOLTAGE: 250V AC FOR 1 MINUTE.
- MECHANICAL CHARACTERISTICS:
 - INSERTION FORCE: 4.5Kgf MAX.
 - WITHDRAWAL FORCE: 0.5~2.5Kgf.
- LIFE TEST: 5,000 CYCLES
- OTHER GENERAL SPEC. TO REFER "HDMI SERIES SPEC".
- TO CONFORM TO THE SINGATRON HAZARDOUS SUBSTANCE FREE SPEC.
- HALOGEN FREE PRODUCT IDENTIFICATION LABEL ON PACKAGING:
- PACKAGE: SEE "2HE2016-001211F" PACKAGE.
- FOR REFLOW SOLDERING LEAD-FREE PROCESS.

NO	DESCRIPTION	QTY	MATERIAL	PLATING & COLOR			
D	CAP	1	LCP UL 94V-0	BLACK			
C	TERMINAL	19	C5191R-H 0.12t	SEE "PART NO."			
B	SHELL	1	SUS 304-1/2H	NICKEL 50u" MIN.			
A	HOUSING	1	LCP UL 94V-0	BLACK			
UNLESS OTHERWISE SPECIFIED TOLERANCES			信音科技(香港)有限公司				
DECIMALS: ANGLES:			TITLE: HDMI TYPE D FEMALE (C/H:1.95mm)				
X	:±0.5	X	:±2°	DWN	EVEN 2021.04.19	PART NO.2HE2016-001211F	
X.X	:±0.3	X.X	:±1°	CHKD		SCALE 1:1	UNIT: mm
X.XX	:±0.2			APVD	ANGELA2021.04.19	SIZE: A3	SHEET:1 OF 1
REV:B							
CUSTOMER COPY							