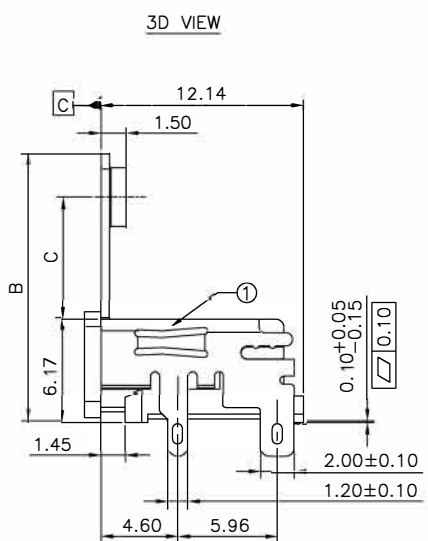
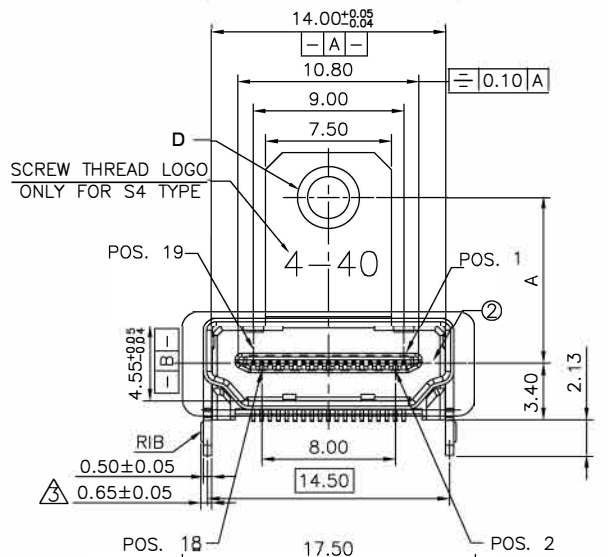
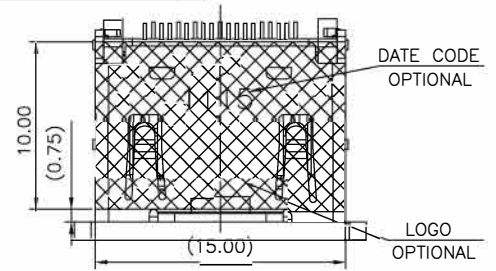


RoHS COMPLIANCE
HALOGEN FREE



PART NO.	A	B	C	D
2HE220-3*S3N-***-IM	9.975	16.04	7.20	M3X0.5
2HE220-3*S2N-***-IM	7.975	14.04	5.20	M3X0.5
2HE220-3*S4N-***-IM	9.975	16.04	7.20	#4-40
2HE220-3*S5N-***-IM	7.975	14.04	5.20	#4-40
2HE220-3*SCN-***-IM	6.975	14.04	4.20	M3X0.5

11 15
YEARS WEEKS
DATE CODE
161115
YEAR MONTH DATE
補充碼是F6時D/C為六碼

REV.	ZONE	LTR	DESCRIPTION	DATE	REVISER	APPD.
5.0	/	△	ADD SPEC	3/10-16	Parker	Tao
6.0	/	△	ADD SPEC	9/27-16	Kevin	Tao

ORDERING INFORMATION

2HE220-3 * * * N - B * R - B - IM - *
(1) (2) (3) (4) (5) (6) (7) (8) (9) (10) (11)

- SERIES NO.
- COLOR CODES
- BLACK
- CONTACT PLATING:
0: GOLD FLASH OVER NICKEL
1: 10u" GOLD OVER NICKEL
2: 15u" GOLD OVER NICKEL
3: 30u" GOLD OVER NICKEL
△ 6: 30u" GOLD ON MATTING AREA,G/F ON SOLDER AREA, NI 50u" MIN UNDER PLATING OVERALL
- SHELL CONSTRUCTION
S5: WITH FLANGE, HEIGHT IS 7.975MM AND TOP SPRING SOLDER TAIL IS THROUGH HOLE TYPE, SCREW THREAD IS #4-40
S4: WITH FLANGE, HEIGHT IS 9.975MM AND TOP SPRING SOLDER TAIL IS THROUGH HOLE TYPE, SCREW THREAD IS #4-40
S3: WITH FLANGE, HEIGHT IS 9.975MM AND TOP SPRING SOLDER TAIL IS THROUGH HOLE TYPE, SCREW THREAD IS M3X0.5
S2: WITH FLANGE, HEIGHT IS 7.975MM AND TOP SPRING SOLDER TAIL IS THROUGH HOLE TYPE, SCREW THREAD IS M3X0.5
SC: WITH FLANGE, HEIGHT IS 6.975MM AND TOP SPRING SOLDER TAIL IS THROUGH HOLE TYPE, SCREW THREAD IS M3X0.5
- SHELL PLATING
N: NICKEL PLATED
4: GOLD FLASH PLATED OVER NICKEL
LOGO OPTIONAL
6: B: WITHOUT LOGO
7: SUFFIX NO.
NONE: SHELL WITH RIB,W/OMYLAR,W/O DATE CODE
4: SHELL W/O RIB,W/O MYLAR,W/O DATE CODE
FA:WITH MYLAR AND,SHELL W/O RIB,W/O DATE CODE
FA:WITH MYLAR AND SHELL W/O RIB,DATE CODE PRINT ON SHELL
FC:WITHOUT MYLAR AND SHELL W/O RIB,DATE CODE PRINT ON SHELL(4 CODE)
△F6:WITHOUT MYLAR AND SHELL W/O RIB,DATE CODE PRINT ON SHELL(6 CODE)
△F7:SHELL W/O RIB,W/O MYLAR,W/O DATE CODE,WITH COVER
- PACKAGING
NONE: PVC TRAY PACKAGE
R: TAPE REEL PACKING
S: 50 PCS/ TRAY PACKAGE △
- SHELL MATERIAL
B: SHELL MATERIAL IS BRASS
S: SHELL MATERIAL IS SPCC
10: SUFFIX NO.
IM: INSERT MOLDING
11: SUFFIX NO.
NONE: WITHOUT HALOGEN FREE
HF: WITH HALOGEN FREE

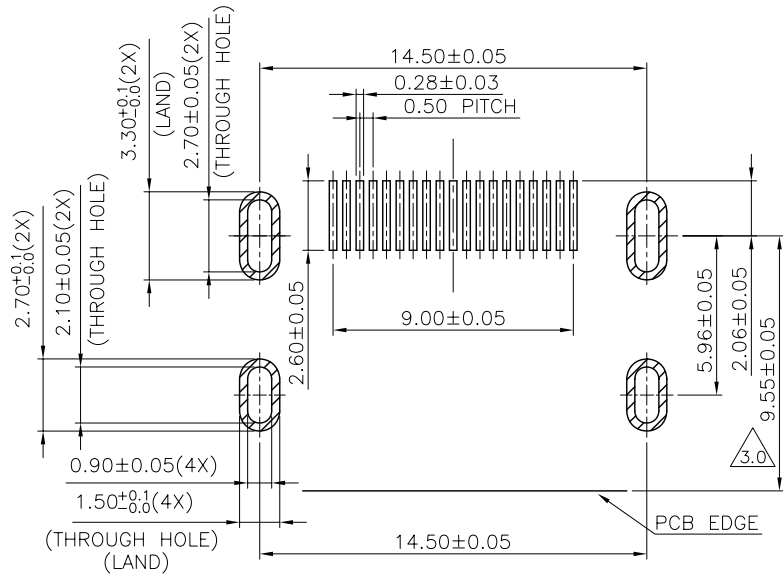
Singatron Enterprise Co., Ltd.

TITLE	HDMI TYPE A RECEPTALE CONNECTOR SMT TYPE		
DWN	Done_Juo 5/9/17	PART NO.	2HE220-3***-***R*-IM
CHKD	Tager Tao	SCALE 1:1	UNIT: mm
APVD	Bill	SIZE: A3	SHEET: 1 / 2
REV: 3.0			

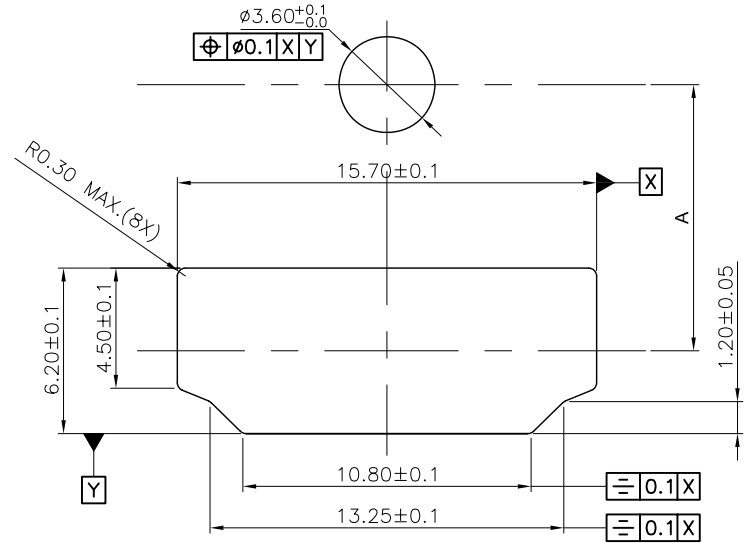
CUSTOMER COPY

RoHS COMPLIANCE

REV.	ZONE	LTR	DESCRIPTION	DATE	REVISER	APPD.
5.0			ADD SPEC	3/10-16	Parker	Tao
6.0		⚠	ADD SPEC	9/27-16	Kevin	Tao



RECOMMENDED P.C.B. LAYOUT (T:1.20mm)
TOLERANCE UNSPECIFIED ±0.05mm



RECOMMENDED PANEL CUT OUT DIMENSION

SPECIFICATIONS:

1. MECHANICAL:

- 1.1 INSERTION FORCE: 44.1N MAX.
- 1.2 WITHDRAWAL FORCE: 9.8N MIN.

2. ELECTRICAL:

- 2.1 CONTACT CURRENT RATING: 0.5A MIN.
- 2.2 VOLTAGE RATING :40V AC(RMS)
- 2.3 WITHSTANDING VOLTAGE:
 - 500 VOLTS AC BETWEEN ADJACENT TERMINAL(UNMATE)
 - 300 VOLTS AC BETWEEN ADJACENT TERMINAL(MATE)
- 2.4 INSULATION RESISTANCE:
 - 100 MOHM MIN.(UNMATED); 10 MOHM MIN.(MATED)
- 2.5 CONTACT RESISTANCE: 30 MILLIOHMS MAX.

3. ENVIRONMENTAL:

- 3.1 OPERATING TEMPERATURE: -25°C TO +85°C

⑤	1	LCP UL94V-0	—	COVER	④
	19	C2680R-H	NI/AU	CONTACT	③
	1	LCP UL94V-0	—	HOUSING	②
	1	C2680/SPCC	NI/AU	SHELL	①
	QTY'S	SPECIFICATION	FINISH	PART	ITEM

Singatron Enterprise Co., Ltd.

TOLERANCE UNSPECIFIED:
.0 0 0 ± 0.15
.0 0 ± 0.20
.0 ± 0.30
ANGLE ± 1°

TITLE	HDMI TYPE A RECEPTACLE CONNECTOR SMT TYPE			
DWN	Zone_Luo 5/9/12	PART NO.	2HE220-3**N-**R-**-IM	
CHKD	Toger Tao	SCALE	1:1	UNIT: mm
APVD	Bill	SIZE:	A3	SHEET: 2 / 2

CUSTOMER COPY