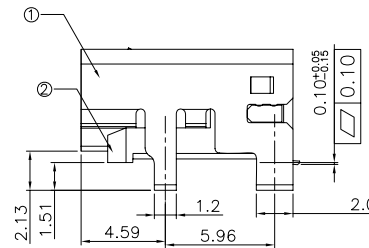
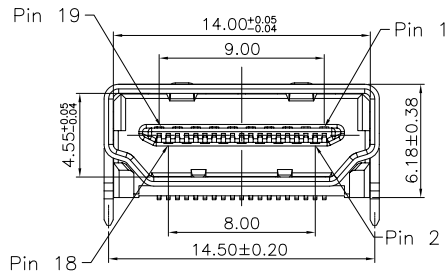
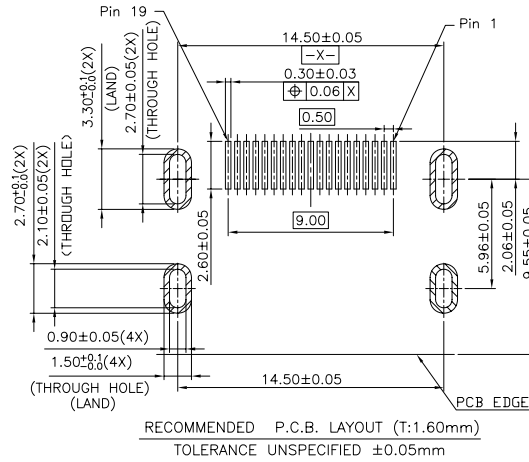
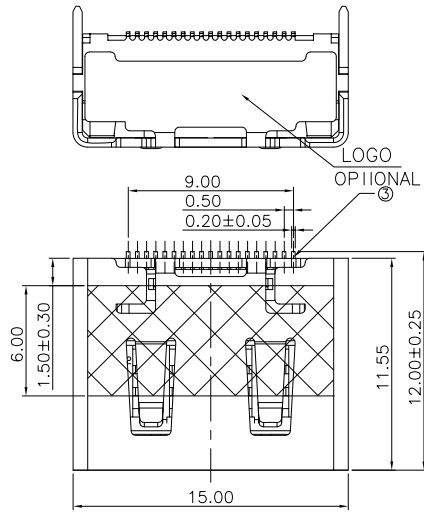


RoHS COMPLIANCE

REV.	ZONE	LTR	DESCRIPTION	DATE	REVISER	APPD.
0.1			NEW RELEASE	15/01/15	Jt.zhou	Bill_WY



ORDERING INFORMATION  
 2HE397 - 3 \* N 1 R \* 157  
 (1) (2) (3) (4) (5) (6) (7) (8)

- SERIES NO.  
2HE397: HDMI CONNECTOR SMT TYPE 19 POSITIONS SOCKET
- COLOR CODES  
3: BLACK
- CONTACT PLATING:  
0M: Gold Flash on contact area, Matte Sn 100u" min on solder tail, All over Ni 60u" min.  
0E: 15u" Min Gold on contact area, Matte Sn 100u" min on solder tail, All over Ni 60u" min.  
0C: 30u" Min Gold on contact area, Matte Sn 100u" min on solder tail, All over Ni 60u" min.
- SHELL PLATING  
N: 80u" Nickel Min all over with 30u" Min Cu underplated.
- ENVIRONMENTAL PROTECTION NO.  
1: RoHS
- PACKAGING  
R: TAPE REEL PACKING
- LOGO OPTIONAL NO.  
0: SHELL WITH NO LOGO
- SERIAL NUMBER  
157: WITHOUT FLANGE AND RIB ,WITH SIDE SPRING AND BACK COVER, AND TOP SPRING SOLDER TAIL IS T/H TYPE

SPECIFICATIONS:

- MECHANICAL:
  - INSERTION FORCE: 44.1 N MAX.
  - WITHDRAWAL FORCE: 9.8N MIN.
- ELECTRICAL:
  - CONTACT CURRENT RATING: 0.5A MIN.
  - VOLTAGE RATING :40V AC(RMS)
  - WITHSTANDING VOLTAGE:
    - 500 VOLTS AC BETWEEN ADIACENT TERMINAL(UNMATE)
    - 300 VOLTS AC BETWEEN ADIACENT TERMINAL(MATE)
  - INSULATION RESISTANCE:
    - 100 MOHM MIN.(UNMATED); 10 MOHM MIN.(MATED)
  - CONTACT RESISTANCE: 30 MILLIOHMS MAX.
- ENVIRONMENTAL:
  - OPERATING TEMPERATURE: -25°C TO +85°C

19	C2680R-H,T=0.20mm	CONTACT	⑤
1	LCP+30%G.F BLACK	HOUSING	②
1	C2680R-H,T=0.50mm	SHELL	①
QTY'S	SPECIFICATION	PART	ITEM

Singatron Enterprise Co., Ltd.

UNSPECIFIED TOLERANCE:  
 DECIMALS: ANGLES:  
 X.: ±0.3 X.: ±1'  
 X.X: ±0.2 X.X: ±0.5'  
 X.XX: ±0.1 - -  
 X.XXX: ±0.05

TITLE	HDMI SMT A TYPE WITHOUT FLANGE CONNECTOR		
DWN	PART NO. 2HE397-3*N1R*157		
CHKD	SCALE 1:1	UNIT: mm	①
APVD	SIZE: A3	SHEET: 1 OF 1	REV: 0.1
<b>CUSTOMER COPY</b>			