
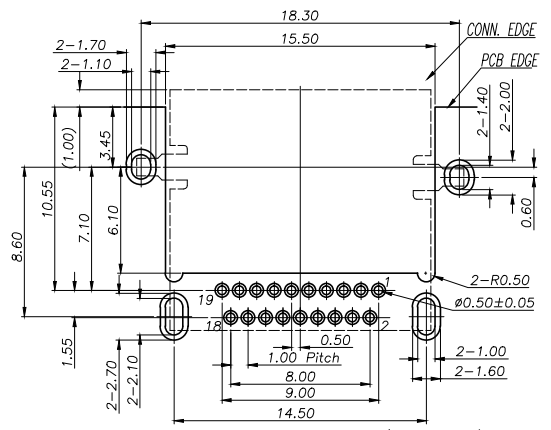
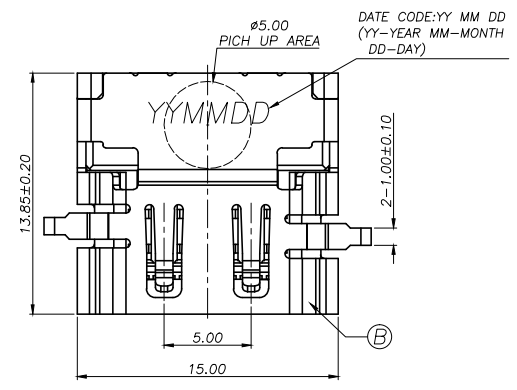


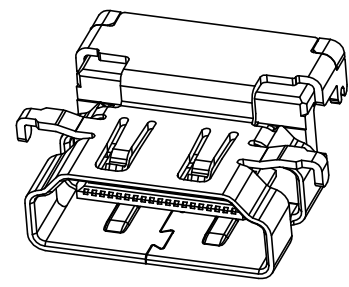
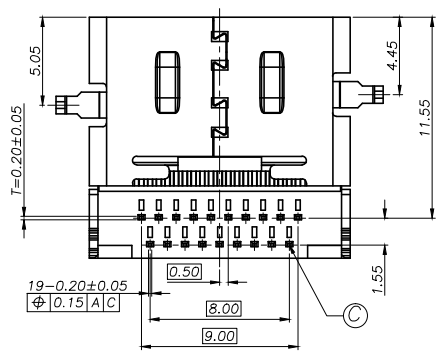
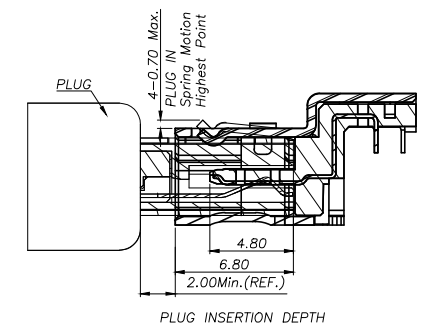
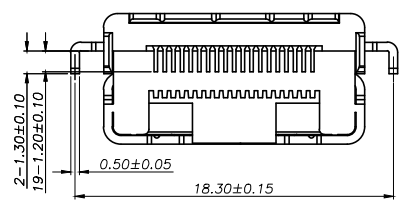
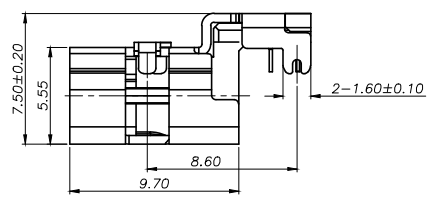
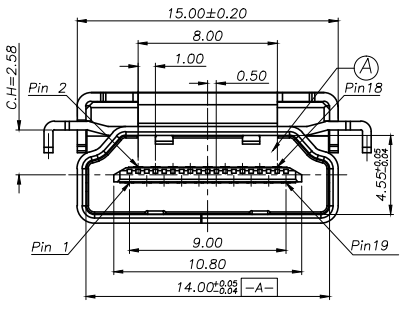
REV.	ECN NO OR DESCRIPTION	REVISED	DATE
A	PDR NO:S160328-4A	jttlucky	2016.09.29


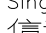
SPECIFICATIONS:

- ELECTRICAL CHARACTERISTICS:
  - CURRENT RATING: 1AMP
  - VOLTAGE RATING: 12V
  - CONTACT RESISTANCE: 30mΩ MAX.(INITIAL)
  - INSULATION RESISTANCE: 100MΩ MIN.AT 500V DC
  - DIELECTRIC WITHSTANDING VOLTAGE: 500V AC FOR ONE MINUTE
- MECHANICAL CHARACTERISTICS:
  - INSERTION FORCE : 3.0 KGF MAX
  - WITHDRAWAL FORCE : 0.5-4.0 KGF
- LIFE TEST: 10,000 CYCLES MIN.
- OTHER GENERAL SPEC. TO REFER "HDMI A TYPE RECEPTACLE SERIES SPEC"
- TO CONFORM TO SINGATRON HAZARDOUS SUBSTANCE FREE SPECIFICATION
- HALOGEN FREE PRODUCT IDENTIFICATION LOGO ON PACKAGING: 
- FOR REFLOW SOLDERING LEAD-FREE PROCESS.
- PACKAGING:TAPE&REEL



RECOMMENDED PCB LAYOUT(TOP VIEW)  
(TOLERANCE=±0.03mm)  
(PCB THICKNESS=1.0±0.05mm)



C	CONTACT	19	COPPER ALLOY,T=0.2	Au 50μ PLATING ON CONTACT AREA; ALL OVER Ni 500μ MIN.
B	SHELL	1	STAINLESS STEEL,T=0.5	BLACK NICKEL PLATED
A	HOUSING	1	HIGH TEMP. THERMOPLASTIC UL 94V-0	BLACK
NO	DESCRIPTION	QTY	MATERIAL	PLATING & COLOR
UNLESS OTHERWISE SPECIFIED TOLERANCES		 Singatron Enterprise Co., Ltd.  信音企業股份有限公司		
DECIMALS: ANGLES:		TITLE: HDMI A TYPE FEMALE,SINKING,CH=2.58mm		
X	:±0.5	X	:±2°	DWN jttlucky PART NO.2HE3Y58-002111F
X.X	:±0.3	X.X	:±1°	CHKD james SCALE:4:1 UNIT: mm
X.XX	:±0.2	APVD	boye	SIZE: A3 SHEET:1 OF 1 REV: A
<b>CUSTOMER COPY</b>				