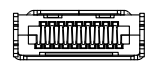
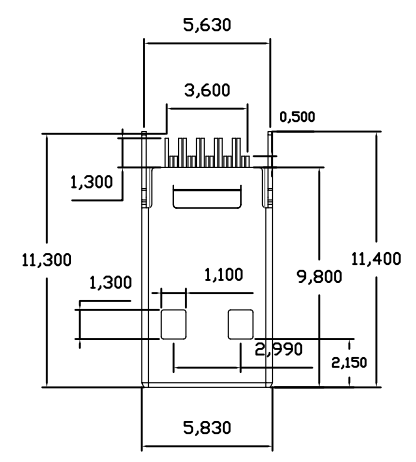
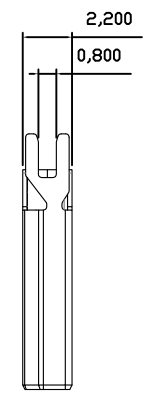
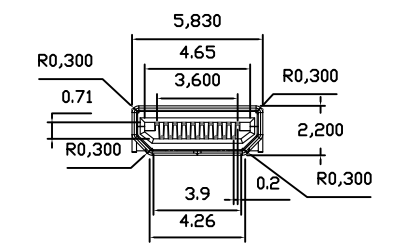


REV.	MODIFICATION	DRAWN	APPROVED

Pin NO.	19	18	17	16	15	14	13	12	11	10
Pin Assignment	5V Power	SDA	SCL	DDC/CEC Ground	CEC	TMDS Clock-	TMDS Clock Shield	TMDS Clock+	TMDS Data0-	TMDS Data0 Shield
Pin NO.	9	8	7	6	5	4	3	2	1	
Pin Assignment	TMDS Data0+	TMDS Data1-	MDS Data1 Shield	TMDS Data1+	TMDS Data2-	TMDS Data2 Shield	TMDS Data2+	Utility	Hot Plug Detect	



NOTES :

- Material :
Housing : High temperature thermoplastic,UL94-V0.
Color : Black
HDMI Terminal : Copper Alloy.
Cover : Copper Alloy.
- Finish : Cover :G/F
- Part no : 2HEP101-50001X

- PLATING:
- 2:Contact:G/F SMT:100 μ"Sn
 - 3:Contact: 5 μ"Au SMT:100 μ"Sn
 - 4:Contact: G/F SMT:G/F
 - 5:Contact: 15 μ"Au SMT:G/F
 - 6:Contact: 20 μ"Au SMT:G/F
 - 7:Contact: 25 μ"Au SMT:G/F
 - 8:Contact: 30 μ"Au SMT:G/F

GENERAL TOLERANCE		SINGATRON U.S.A.				
.X.ià 0.40	.X.i.à 5ià					
.X.ià 0.30	.X.i.à 2ià					
.XXià 0.20	.XXi.à 1ià					
.XXXià 0.10	.XXXi.à 0.5ià					
TITLE		HDMI TYPE D PLUG CONNECTOR				
CUSTOMER DRAWING		PART NO.	2HEP101-50001X		DWG NO.	20131113
APPROVAL	CHECKED	DRAWN	UNIT	SCALE	SHEET	REV.
			mm	NONE	1 / 2	A