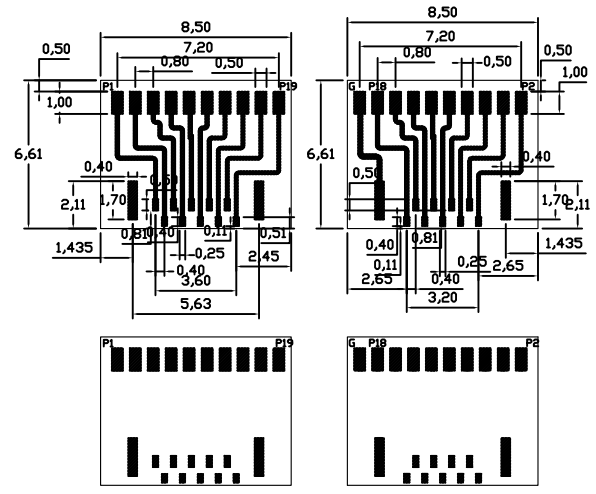
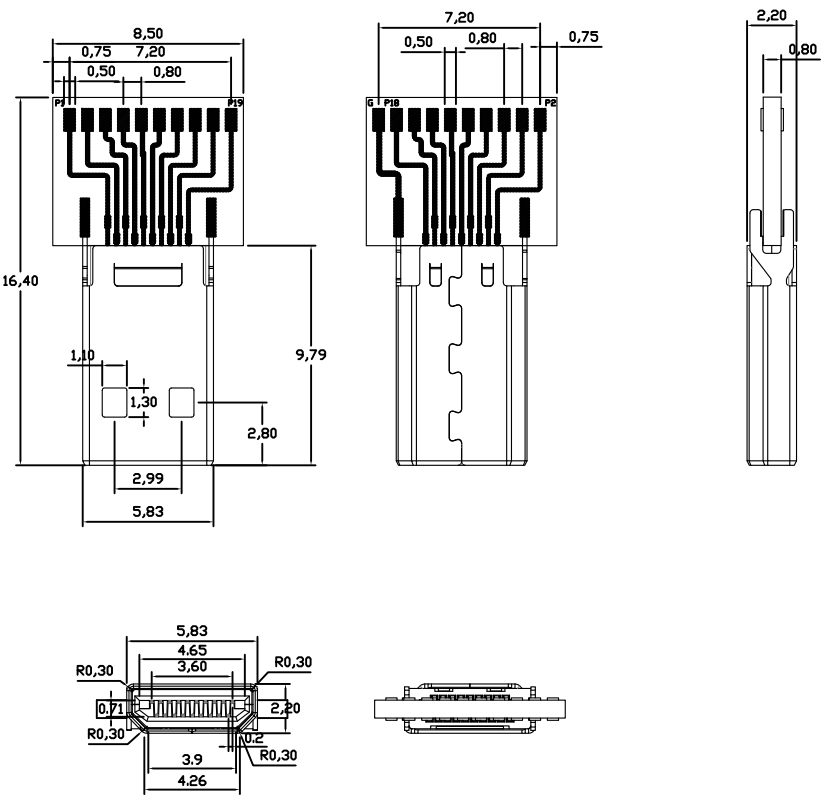


REV.	MODIFICATION	DRAWN	APPROVED
B	Add Pin assignment		

Pin NO.	19	18	17	16	15	14	13	12	11	10
Pin Assignment	5V Power	SDA	SCL	DDC/CEC Ground	CEC	TMDS Clock-	TMDS Clock Shield	TMDS Clock+	TMDS Data0-	TMDS Data0 Shield
Pin NO.	9	8	7	6	5	4	3	2	1	
Pin Assignment	TMDS Data0+	TMDS Data1-	MDS Data1 Shield	TMDS Data1+	TMDS Data2-	TMDS Data2 Shield	TMDS Data2+	Utility	Hot Plug Detect	

NOTES :

- 1. Material :
Housing : High temperature thermoplastic, UL94-V0.
Color : Black
HDMI Terminal : Copper Alloy.
Cover : Copper Alloy.
- 2. Finish :
Cover : G/F
- 3. Part no : 2HEP110-50001X



PCB 正面

PCB 背面

PLATING:
 2: Contact: G/F SMT: 100 μ"Sn
 3: Contact: 5 μ"Au SMT: 100 μ"Sn
 4: Contact: G/F SMT: G/F
 5: Contact: 15 μ"Au SMT: G/F
 6: Contact: 20 μ"Au SMT: G/F
 7: Contact: 25 μ"Au SMT: G/F
 8: Contact: 30 μ"Au SMT: G/F

GENERAL TOLERANCE		SINGATRON U.S.A.	
X.ià 0.40	X.ià.ià 5ià		
.Xià 0.30	.Xià.ià 2ià		
.XXià 0.20	.XXià.ià 1ià		
.XXXià 0.10	.XXXià.ià 0.5ià	TITLE HDMI TYPE D PLUG CONNECTOR	
CUSTOMER DRAWING		PART NO. 2HEP110-50001X	DWG NO. 20131113
APPROVAL	CHECKED	DRAWN	UNIT mm
		SCALE NONE	SHEET 1 / 2
		PRD.J.	REV. B