

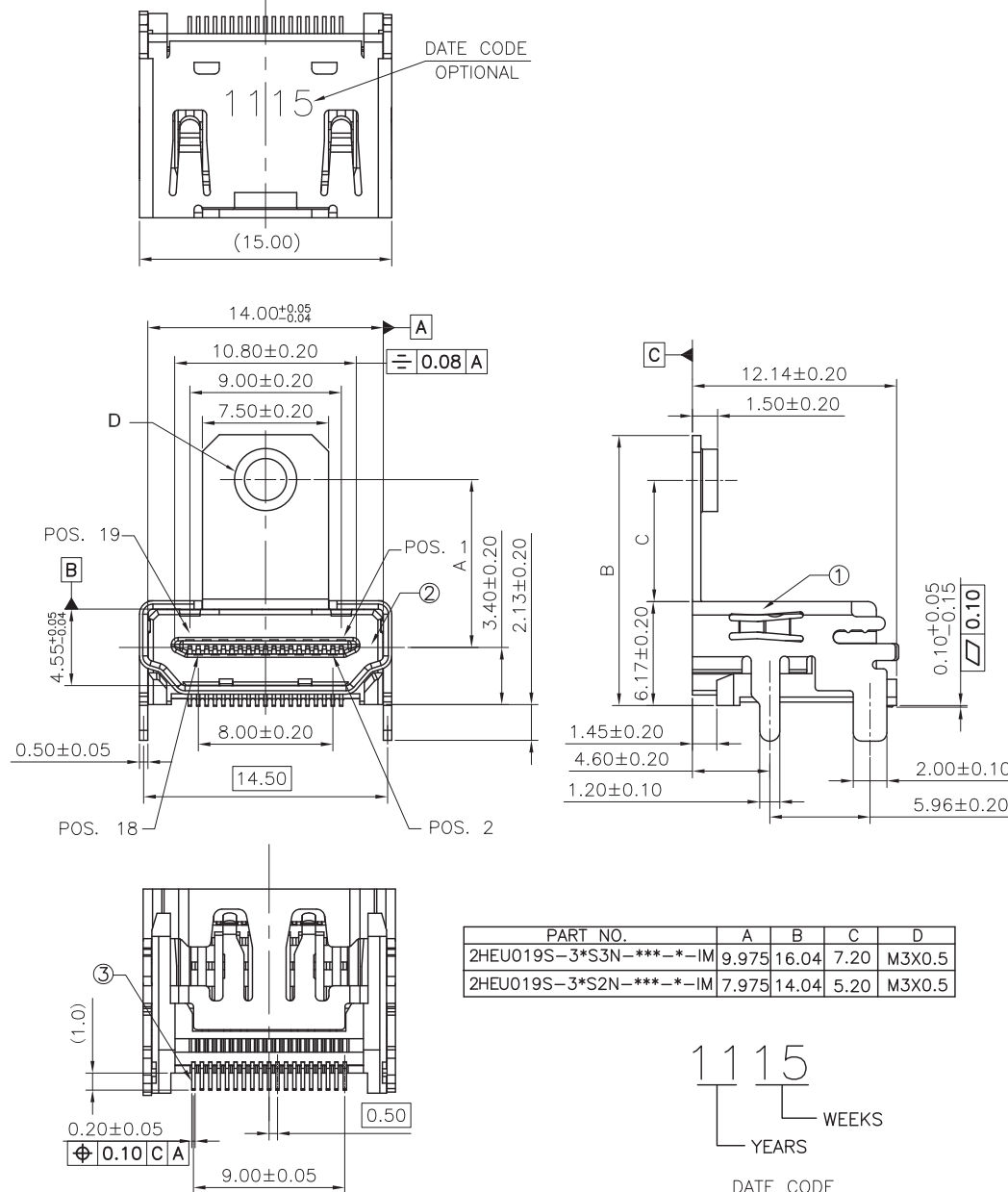
RoHS COMPLIANCE

REV.	ZONE	LTR	DESCRIPTION	DATE	REVISER	APPD.
1.0			NEW DESIGN	11/30'11	Zane	Jarvis

**ORDERING INFORMATION**

2HE U 019 S - 3 \* \* N - \* \* R - \* - IM  
 (1) (2) (3) (4) (5) (6) (7) (8) (9)(10)(11) (12) (13)

- SERIES NO.  
2HE: HDMI CONNECTOR
- TAIL CONSTRUCTION TYPE  
U: SMT TYPE
- NUMBER OF PIN  
019: 19 POSITIONS
- CONTACT & CONNECTION TYPES:  
S: SOCKET  
3: BLACK
- COLOR CODES  
0: GOLD FLASH OVER NICKEL  
1: 10u" GOLD OVER NICKEL  
2: 15u" GOLD OVER NICKEL  
3: 30u" GOLD OVER NICKEL
- SHELL CONSTRUCTION  
S3: WITH FLANGE, HEIGHT IS 9.975MM AND TOP SPRING  
SOLDER TAIL IS THROUGH HOLE TYPE, SCREW THREAD IS M3X0.5  
S2: WITH FLANGE, HEIGHT IS 7.975MM AND TOP SPRING  
SOLDER TAIL IS THROUGH HOLE TYPE, SCREW THREAD IS M3X0.5
- SHELL PLATING  
N: NICKEL PLATED  
4: GOLD FLASH PLATED OVER NICKEL
- LOGO OPTIONAL  
B: WITHOUT LOGO  
10: SUFFIX NO.  
4: W/O MYLAR AND SHELL W/O RIB  
F4: WITH MYLAR AND SHELL W/O RIB  
FA: WITH MYLAR AND SHELL W/O RIB; DATE CODE PRINT ON SHELL
- PACKAGING  
NONE: PVC TRAY PACKAGE  
R: TAPE REEL PACKING
- SHELL MATERIAL  
B: SHELL MATERIAL IS BRASS  
S: SHELL MATERIAL IS SPCC
- SUFFIX NO.  
IM: INSERT MOLDING



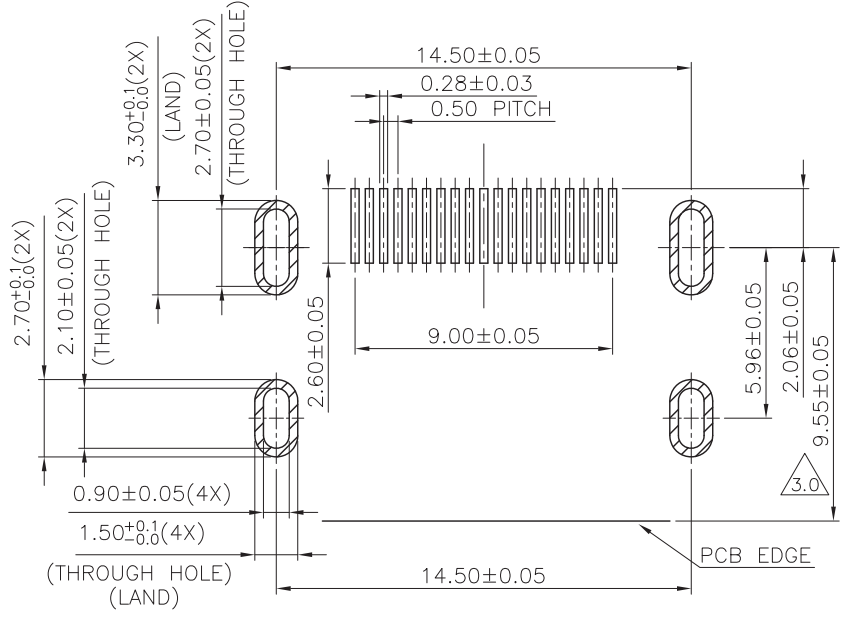
PART NO.	A	B	C	D
2HEU019S-3*S3N-***-*IM	9.975	16.04	7.20	M3X0.5
2HEU019S-3*S2N-***-*IM	7.975	14.04	5.20	M3X0.5

1115  
 YEARS WEEKS  
 DATE CODE

UNLESS OTHERWISE SPECIFIED TOLERANCES		Singatron Enterprise Co., Ltd.			
DECIMALS:	ANGLES:	TITLE	HDMI TYPE A RECEPTACLE CONNECTOR SMT TYPE		
X :±0.5	X :±2°	DWN	Zane luo 5/9/12	PART NO.	2HEU019S-3*S*N-***-*IM
XX :±0.3	XX :±1°	CHKD	Tager Tao	SCALE	1:1 UNIT: mm
XX.X :±0.2		APVD	Blll	SIZE	A3 SHEET: 1 OF 2 REV: 1.0
<b>CUSTOMER COPY</b>					

**RoHS COMPLIANCE**

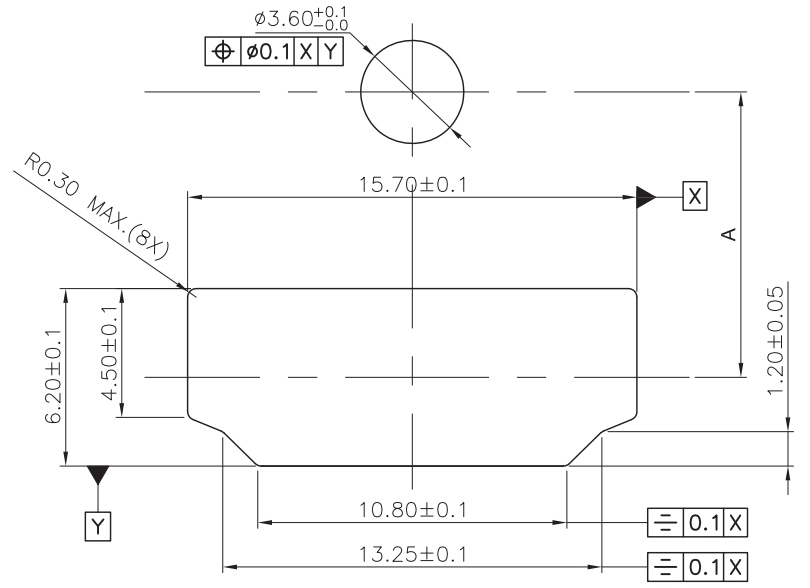
REV.	ZONE	LTR	DESCRIPTION	DATE	REVISER	APPD.
1.0			NEW DESIGN	11/30'11	Zane	Jarvis



RECOMMENDED P.C.B. LAYOUT (T:1.20mm)  
TOLERANCE UNSPECIFIED ±0.05mm

SPECIFICATIONS:

1. MECHANICAL:
  - 1.1 INSERTION FORCE: 44.1N MAX.
  - 1.2 WITHDRAWAL FORCE: 9.8N MIN.
2. ELECTRICAL:
  - 2.1 CONTACT CURRENT RATING: 0.5A MIN.
  - 2.2 VOLTAGE RATING :40V AC(RMS)
  - 2.3 WITHSTANDING VOLTAGE:
    - 500 VOLTS AC BETWEEN ADIACENT TERMINAL(UNMATE)
    - 300 VOLTS AC BETWEEN ADIACENT TERMINAL(MATE)
  - 2.4 INSULATION RESISTANCE:
    - 100 MOHM MIN.(UNMATED); 10 MOHM MIN.(MATED)
  - 2.5 CONTACT RESISTANCE: 30 MILLIOHMS MAX.
3. ENVIRONMENTAL:
  - 3.1 OPERATING TEMPERATURE: -25°C TO +85°C



RECOMMENDED PANEL CUT OUT DIMENSION

19	C2680	CONTACT	③
1	LCP	HOUSING	②
1	C2680	SHELL	①
QTY'S	SPECIFICATION	PART	ITEM

UNLESS OTHERWISE SPECIFIED TOLERANCES		Singatron Enterprise Co., Ltd.			
DECIMALS:	ANGLES:	TITLE	HDMI TYPE A RECEPTACLE CONNECTOR SMT TYPE		
X :±0.5	X :±2°	DWN	Zone Iuo 5/9/12	PART NO.2HEU019S-3*S*N-***-IM	
X.X :±0.3	X.X :±1°	CHKD	Tager Tao	SCALE 1:1	UNIT: mm
X.XX :±0.2		APVD	BIII	SIZE: A3	SHEET: 2 OF 2
<b>CUSTOMER COPY</b>					