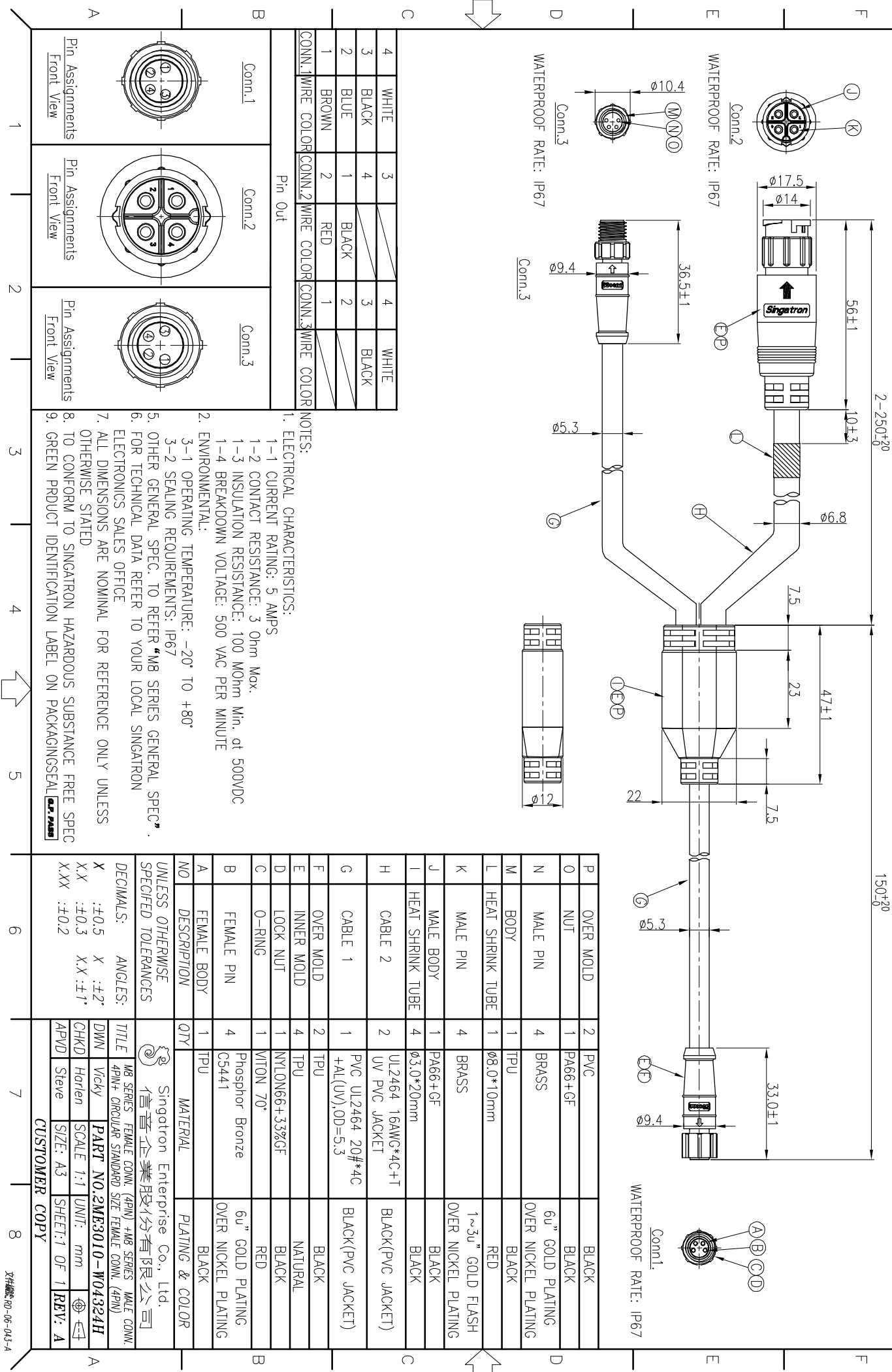


REV.	ECN NO.	OR DESCRIPTION	REVISED	DATE
A	PDR	NO.SI51028-16A	Vicky	2015.10.27



CONN. 1	WIRE COLOR	CONN. 2	WIRE COLOR	CONN. 3	WIRE COLOR
4	WHITE	3		4	WHITE
3	BLACK	4		3	BLACK
2	BLUE	1	BLACK	2	
1	BROWN	2	RED	1	

NOTES:

1. ELECTRICAL CHARACTERISTICS:

1-1 CURRENT RATING: 5 AMPS

1-2 CONTACT RESISTANCE: 3 Ohm Max.

1-3 INSULATION RESISTANCE: 100 MOhm Min. at 500VDC

1-4 BREAKDOWN VOLTAGE: 500 VAC PER MINUTE

2. ENVIRONMENTAL:

3-1 OPERATING TEMPERATURE: -20° TO +80°

3-2 SEALING REQUIREMENTS: IP67

5. OTHER GENERAL SPEC. TO REFER "M8 SERIES GENERAL SPEC".

6. FOR TECHNICAL DATA REFER TO YOUR LOCAL SINGATRON ELECTRONICS SALES OFFICE

7. ALL DIMENSIONS ARE NOMINAL FOR REFERENCE ONLY UNLESS OTHERWISE STATED

8. TO CONFORM TO SINGATRON HAZARDOUS SUBSTANCE FREE SPEC

9. GREEN PRODUCT IDENTIFICATION LABEL ON PACKAGING SEAL

P	OVER MOLD	2	PVC	BLACK
O	NUT	1	PA66+GF	BLACK
N	MALE PIN	4	BRASS	6u" GOLD PLATING OVER NICKEL PLATING
M	BODY	1	TPU	BLACK
L	HEAT SHRINK TUBE	1	Ø8.0*10mm	RED
K	MALE PIN	4	BRASS	1~3u" GOLD FLASH OVER NICKEL PLATING
J	MALE BODY	1	PA66+GF	BLACK
I	HEAT SHRINK TUBE	4	Ø3.0*20mm	BLACK
H	CABLE 2	2	UL2464 16AWG*4C+T UV PVC JACKET	BLACK(PVC JACKET)
G	CABLE 1	1	PVC UL2464 20#*4C +AL(UV),OD=5.3	BLACK(PVC JACKET)
F	OVER MOLD	2	TPU	BLACK
E	INNER MOLD	4	TPU	NATURAL
D	LOCK NUT	1	NYLON66+33%GF	BLACK
C	O-RING	1	WTON 70°	RED
B	FEMALE PIN	4	Phosphor Bronze CS441	6u" GOLD PLATING OVER NICKEL PLATING
A	FEMALE BODY	1	TPU	BLACK

A	DESCRIPTION	QTY	MATERIAL	PLATING & COLOR
UNLESS OTHERWISE SPECIFIED TOLERANCES				
DECIMALS: ANGLES:				
X	:±0.5	X	:±2°	
X.X	:±0.3	X.X	:±1°	
X.XX	:±0.2			
TITLE				
M8 SERIES FEMALE CONN. (4PIN) +M8 SERIES MALE CONN. (4PIN)+ Ocular STANDARD SIZE FEMALE CONN. (4PIN)				
CHKD	Horien	SCALE	1:1	UNIT: mm
APVD	Steve	SIZE: A3	SHEET: 1 OF 1	REV: A

CUSTOMER COPY

Singatron Enterprise Co., Ltd.
信晉企業股份有限公司

文#線: 86-06-043-4