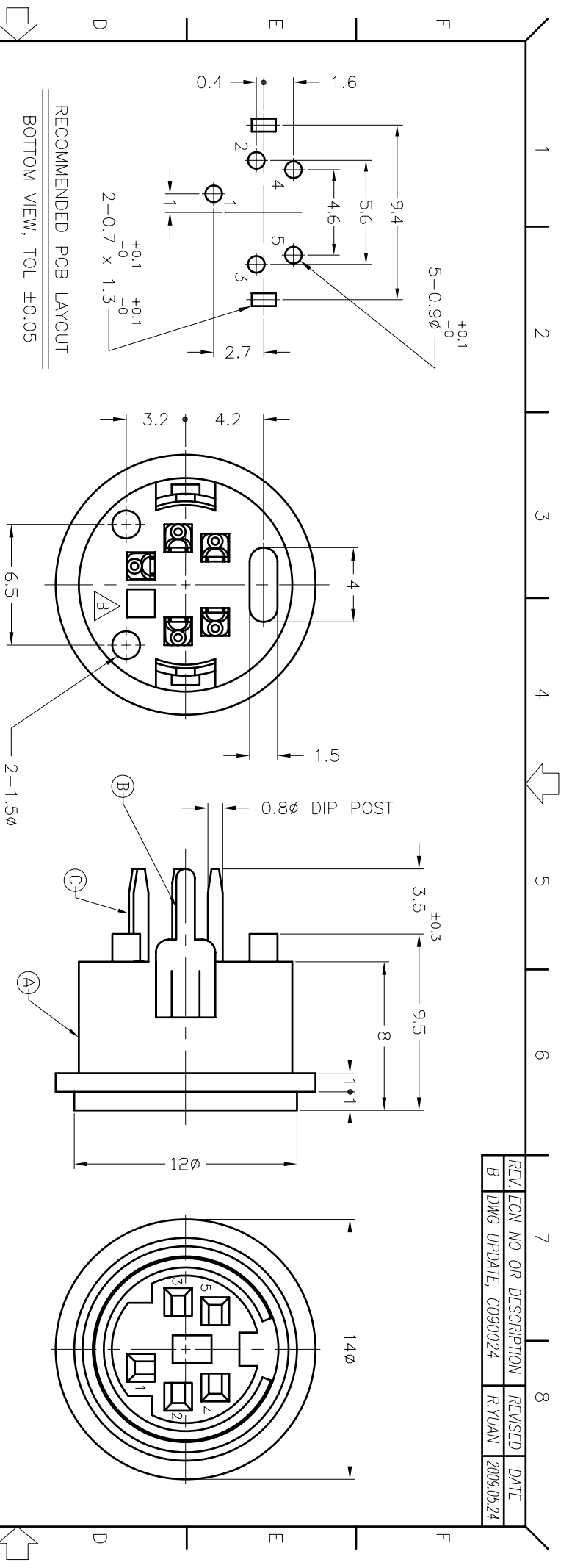


REV.	EGN NO.	OR DESCRIPTION	REVISED	DATE
B	DWG UPDATE:	C090024	R.YUAN	2009.05.24



RECOMMENDED PCB LAYOUT
BOTTOM VIEW, TOL ±0.05

- SPECIFICATIONS:
1. CURRENT CARRYING CAPACITY: 1A 100VAC MAX. OR 2A 12VDC MAX.
 2. CONTACT RESISTANCE: 30mΩ MAX.
 3. INSULATION RESISTANCE: 100MΩ MIN. AT 250VDC
 4. DIELECTRIC STRENGTH: 250VAC 1 MINUTE WITHOUT BREAKDOWN
 5. INSERTION FORCE: 0.8KG ~ 5KG
 6. WITHDRAWAL FORCE: 0.8KG ~ 4KG
 7. SINGLE CONTACT MAINTENANCE FORCE: 20g MIN. (TEST PIN: 0.6φ)
 8. CONTACT PULL STRENGTH: 1KG MIN.
 9. LIFE CYCLE TEST: 5000 CYCLES, @10~20 CYCLES PER MINUTE WITH NO ELECTRICAL LOAD
 10. MOISTURE RESISTANCE TEST: 500 HOURS @90% TO 95%, @40°C±2°C
 11. HEAT RESISTANCE TEST: 500 HOURS @100°C±2°C
 12. OPERATION TEMPERATURE: -10°C TO 60°C
 13. SOLDERABILITY TEST: DEWET PERCENTAGE 95% MIN. (LIMITED TO SILVER & TIN PLATING)
 14. SOLDERING HEAT TEST: @260°C±10°C FOR 10±0.5 SECONDS
 15. FOR WAVE SOLDERING LEAD-FREE PROCESS.
 16. TO CONFORM TO SINGATRON HAZARDOUS SUBSTANCE FREE SPEC.
 17. GREEN PRODUCT IDENTIFICATION MARK ON JACK: **▲**
 18. GREEN PRODUCT IDENTIFICATION LABEL ON PACKAGING: **G.P. PASS**
 19. UNLESS OTHERWISE SPECIFIED TOLERANCE ARE ±0.2

NO	DESCRIPTION	QTY	MATERIAL	PLATING & COLOR
C	CONTACT	5	COPPER ALLOY 0.2T	SILVER PLATING
B	EARTH TERMINAL	1	COPPER ALLOY 0.4T	TIN PLATING
A	BODY	1	THERMO PLASTIC, UL94V-0, BLACK	

UNLESS OTHERWISE SPECIFIED TOLERANCES

Singatron Enterprise Co., Ltd.
信亨企業股份有限公司

TITLE	MINATURE	DIN CONNECTOR (VERTICAL TYPE)
DWM	R.YUAN	PART NO. 2M-03A3A110
CHKD		SCALE 4:1 UNIT: mm
APVD	ROBIM	SIZE: A3 SHEET: 1 OF 1 REV: B

CUSTOMER COPY