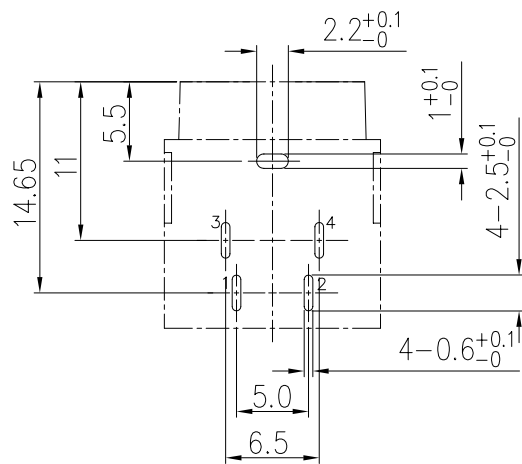
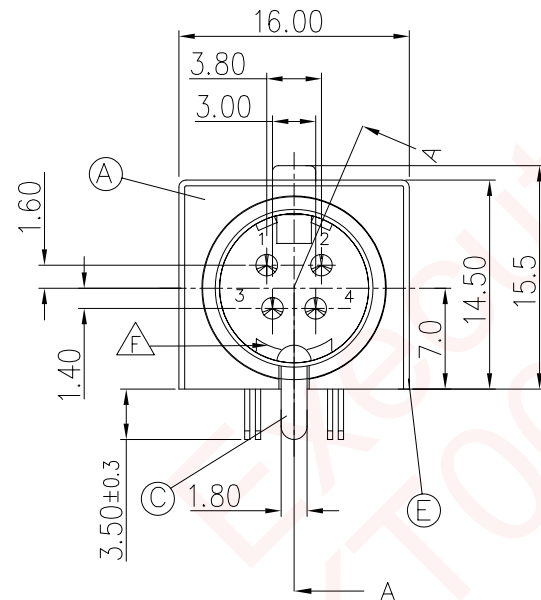
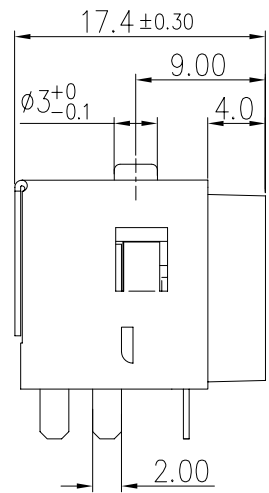


REV.	ECN NO OR DESCRIPTION	REVISED	DATE
D	修正圖面PIN 腳序號標示錯誤	XIN CHAO	2009.07.29
E	ECN: C110044 MODIFY DRAWING	LONGJIANG	2011.02.18
F	ECN: C160012 MODIFY DRAWING	CHEN	2016.02.26

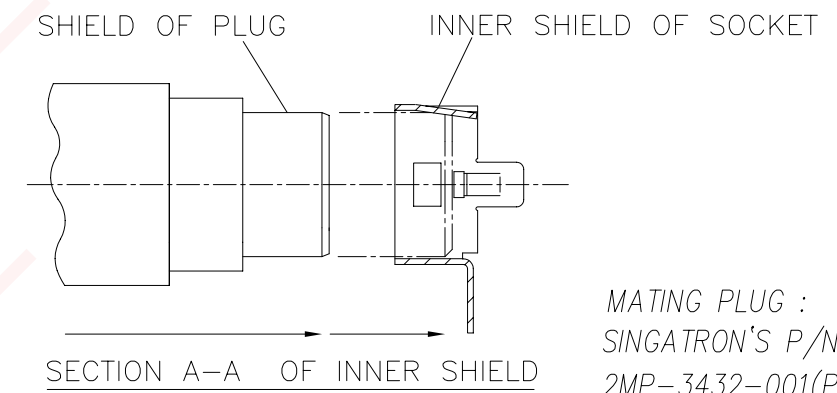
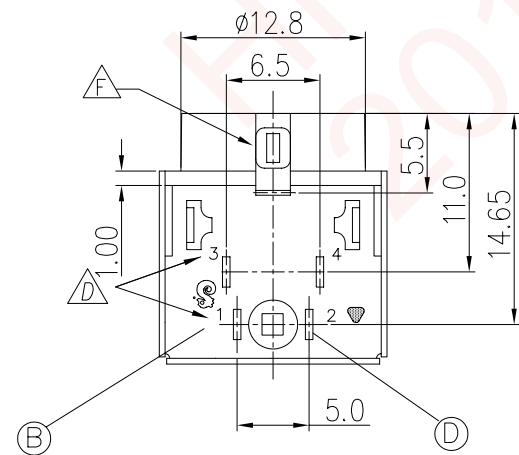
**SPECIFICATIONS:**

- ELECTRICAL CHARACTERISTICS:**
  - RATING: 20V 7.5A
  - CONTACT RESISTANCE: INITIAL 30mΩ MAX. AFTER LIFE TEST 60mΩ MAX.
  - DIELECTRIC WITHSTANDING VOLTAGE: 250V AC FOR ONE MINUTE.
  - INSULATION RESISTANCE: 100MΩ MIN. MEASURED BY 250V DC
- MECHANICAL CHARACTERISTICS:**
  - INSERTION FORCE : 1.0~4.0 kgf (INITIAL / AFTER LIFE TEST)
  - WITHDRAWAL FORCE : 1.0~4.0 kgf (INITIAL / AFTER LIFE TEST)
- LIFE TEST: 5,000 CYCLES**
- OTHER GENERAL SPEC. TO REFER "2MJ-3432 SERIES SPEC".**
- TO CONFORM TO SINGATRON HAZARDOUS SUBSTANCE FREE SPEC.**
- GREEN PRODUCT IDENTIFICATION LABEL ON PACKAGING:**
- GREEN PRODUCT IDENTIFICATION LABEL ON PACKAGING:** **G.P. PASS**
- FOR REFLOW SOLDERING LEAD-FREE PROCESS.**
- PRINTED DATE CODE "YY MM DD" ON TOP OF CONNECTOR.**

DD: DAY  
MM: MONTH  
YY: YEAR



RECOMMENDED PCB LAYOUT  
(SOLDER VIEW)  
TOLERANCE: ±0.05



MATING PLUG :  
SINGATRON'S P/N :  
2MP-3432-001(PLUG SET)

E	OUTER SHIELD	1	BRASS 0.4t	TIN PLATING(LEAD FREE)
D	CONTACT PIN	4	BRASS 0.3t	SILVER PLATING
C	INNER SHIELD	1	BRASS 0.4t	NICKEL PLATING
B	COVER	1	HIGH TEMP. THERMOPLASTIC	BLACK COLOR
A	BODY	1	UL 94V-0	BLACK COLOR
NO	DESCRIPTION	QTY	MATERIAL	PLATING & COLOR

UNLESS OTHERWISE SPECIFIED TOLERANCES

Singatron Enterprise Co., Ltd.  
信音企業股份有限公司

DECIMALS:	ANGLES:	TITLE	4P SOCKET		
X : ±0.5	X : ±2°	DWN	Chen-Cao 16/03/02	PART NO. 2MJ-3432-006	
X.X : ±0.3	X.X : ±1°	CHKD	Stone-Zhu 16/03/02	SCALE 1:2	UNIT: mm
X.XX : ±0.2		APVD	Zjz-Zhou 16/03/02	SIZE: A3	SHEET: 1 OF 1

**CUSTOMER COPY**