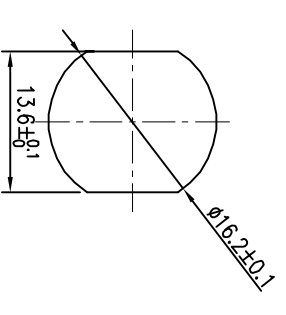
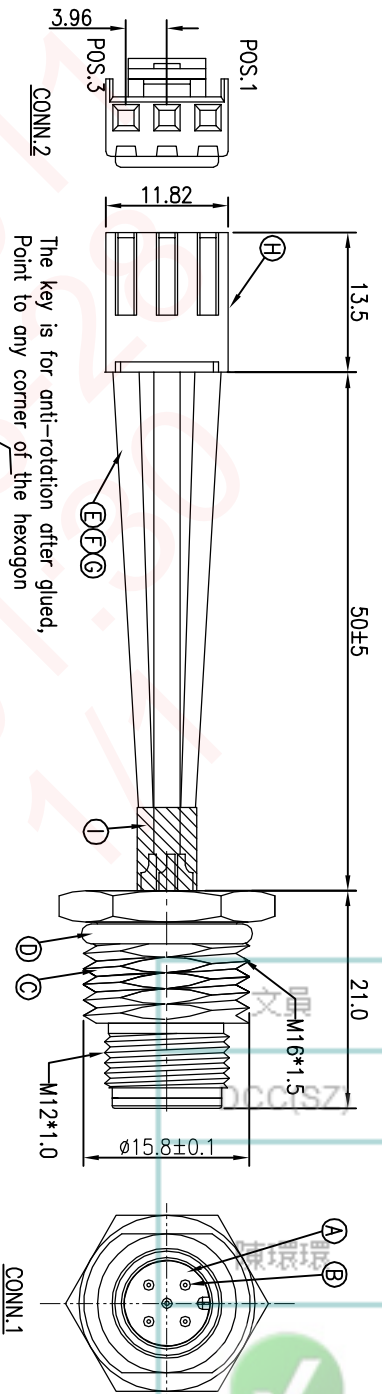


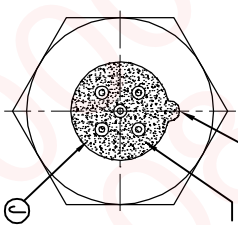
| REV. | ECN NO. | OR DESCRIPTION | REVISED | DATE |
|------|---------------------|----------------|---------|------------|
| A | PDR NO.:T121218-15A | LILY | | 2013.01.31 |
| B | ECN NO.:S150343-C | Susie | | 2015.03.20 |
| C | ECN NO.:S150824-C | Harlen | | 2015.8.17 |



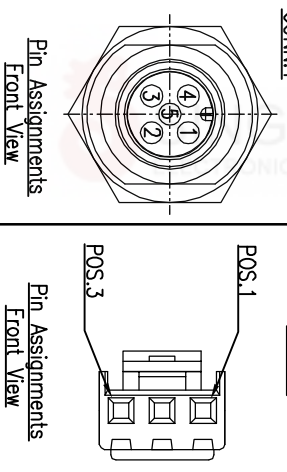
Recommend Panel Cut-out



The key is for anti-rotation after glued,
Point to any corner of the hexagon



| | | |
|-------------------|-------|--------|
| 5 | WHITE | 3 |
| 4 | / | / |
| 3 | BLACK | 2 |
| 2 | / | / |
| 1 | RED | 1 |
| CONN.1 WIRE COLOR | | CONN.2 |
| PIN OUT | | |



- NOTES:
- ELECTRICAL CHARACTERISTICS
RATING: 60V AC/DC 5A
DIELECTRIC WITHSTANDING VOLTAGE: 500V AC FOR ONE MINUTE
TEMPERATURE RANGE: -40°C TO +100°C
 - SPECIFICATIONS:SEE "M12 SERIES SPECIFICATIONS".
 - TO CONFORM TO SINGATRON HAZARDOUS SUBSTANCE FREE SPEC.
 - GREEN PRODUCT IDENTIFICATION LABEL ON PACKAGING:
 - FOR PANEL THICKNESS MAX OF 4.5mm

| | | | | |
|----|------------------|-----|--------------------------------------|-----------------|
| J | LIQUID GLUE | 1 | N/A | BLACK |
| I | HEAT SHRINK TUBE | 3 | ø3.0mm L10mm 300V 125° | BLACK |
| H | CONNECTOR | 1 | Nylon 66 UL94V-0 | WHITE |
| G | WIRE | 3 | BRASS | TIN PLATING |
| F | WIRE | 1 | UL 1015 22AWG | WHITE |
| E | WIRE | 1 | UL 1015 22AWG | BLACK |
| D | O-RING | 1 | UL 1015 22AWG | RED |
| C | SHIELD | 1 | SILICONE | BLACK |
| B | MALE PIN | 5 | BRASS | NICKEL PLATING |
| A | BODY | 1 | 6u" GOLD PLATING OVER NICKEL PLATING | BLACK |
| NO | DESCRIPTION | QTY | MATERIAL | PLATING & COLOR |

| | | | |
|---------------------------------------|---------|--|--|
| UNLESS OTHERWISE SPECIFIED TOLERANCES | | Singatron Enterprise Co., Ltd. 信登企業股份有限公司 | |
| DECIMALS: | ANGLES: | TITLE M12 SERIES FRONT MOUNT MALE CONN. 5PIN | |
| X :±0.5 | X :±2° | HEXAGONAL BACKSHELL | |
| XX :±0.3 | XX :±1° | PART NO.2MT3003-W08315H | |
| XXX :±0.2 | | CHKD JF SCALE 2:1 UNIT: mm | |
| | | APVD Steve SIZE: A3 SHEET:1 OF 1 REV: C | |

CUSTOMER COPY