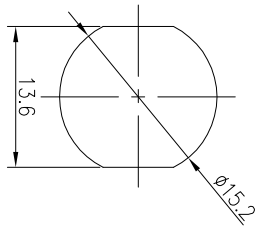
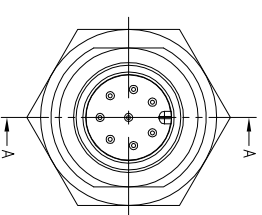
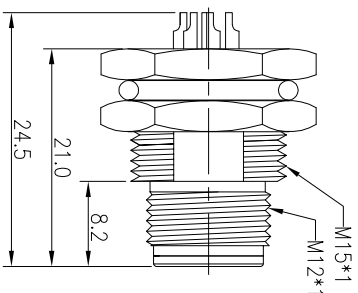
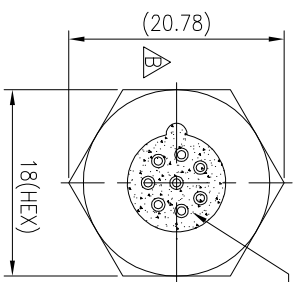
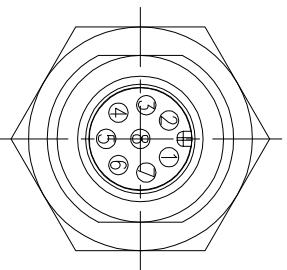


REV.	ECN NO. OR DESCRIPTION	REVISED	DATE
A	PDR NO.:T09012015P	Steve	2009.01.08
B	ECN NO.: S120108	Shown	2012.01.06

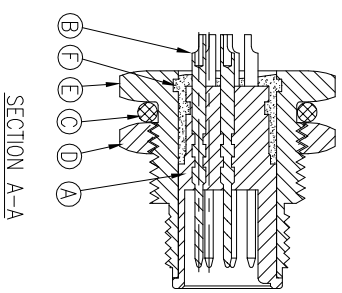


Recommend Panel Cut-out



Pin Assignments
Front View

- NOTES:
1. WATERPROOF RATE: IP68
IP68: IMMERSED IN 1M WATER FOR 24 HOURS
 2. ELECTRICAL CHARACTERISTICS
TEMPERATURE RANGE: -40°C TO +100°C
RATING: 60V AC/DC 2A
DIELECTRIC WITHSTANDING VOLTAGE: 500V AC FOR ONE MINUTE
 3. SPECIFICATIONS:SEE "M12 SERIES SPECIFICATIONS".
 4. TO CONFORM TO SINGATRON HAZARDOUS SUBSTANCE FREE SPEC.
 5. GREEN PRODUCT IDENTIFICATION LABEL ON PACKAGING: **GR-PASS**
 6. FOR PANEL THICKNESS MAX OF 4.5mm



ITEM	DESCRIPTION	QTY	MATERIAL	PLATING & COLOR
F	LIQUID GLUE	1	N/A	BLACK
E	SHIELD	1	BRASS	NICKEL PLATING 100U"
D	NUT	1	BRASS	NICKEL PLATING 100U"
C	O-RING	1	EPDM	BLACK
B	MALE PIN	8	BRASS	6u" GOLD PLATED OVER NICKEL PLATING
A	BODY	1	NYLON+33%GF	BLACK
NO	DESCRIPTION	QTY	MATERIAL	PLATING & COLOR

UNLESS OTHERWISE SPECIFIED TOLERANCES

DECIMALS: ANGLES:

X :±0.5 X :±2°
X.X :±0.3 X.X :±1°
X.XX :±0.2

Singatron Enterprise Co., Ltd.
信普企業股份有限公司
M12 SERIES FRONT MOUNT MALE CONN. (8PIN)
HEXAGONAL BACKSHELL

DWN Shown **PART NO. 2MT13003-W08200**
CHKD Harden SCALE 2:1 UNIT: mm
APVD Tony SIZE: A3 SHEET: 1 OF 1 REV: B

CUSTOMER COPY