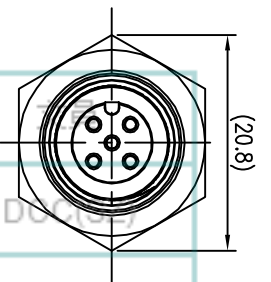
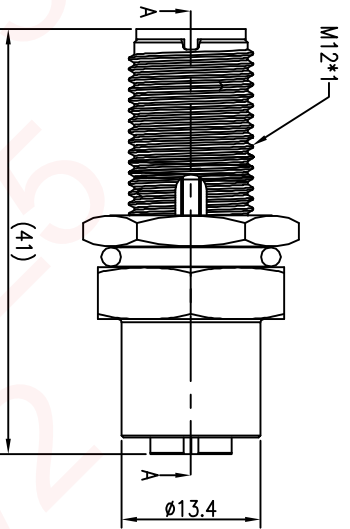
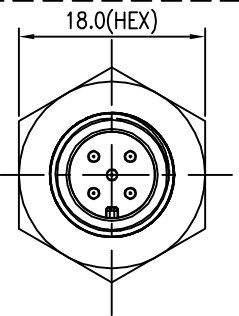
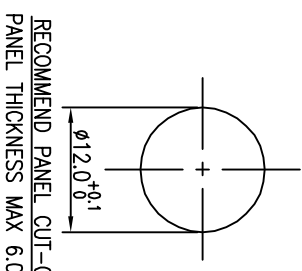
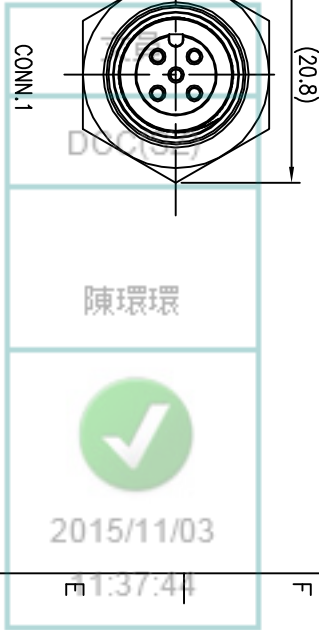
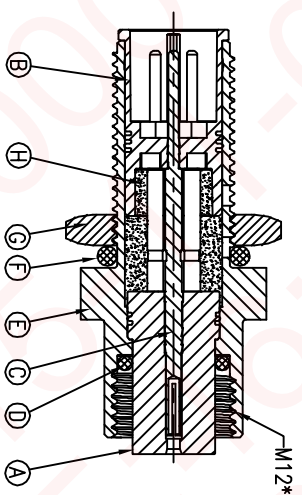
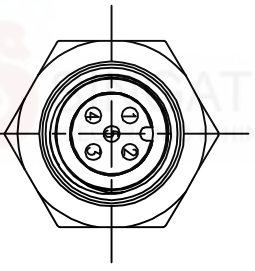
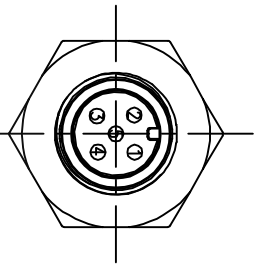


REV.	ECN NO.	OR DESCRIPTION	REVISED	DATE
A	PDR NO.:	T140624-3A	JF	2015.09.25



CONN.2

CONN.1



SECTION A-A

CONN.2
PIN ASSIGNMENTS
FRONT VIEW

CONN.1
PIN ASSIGNMENTS
FRONT VIEW

- NOTES:
- ELECTRICAL CHARACTERISTICS:
 - 1-1 CURRENT RATING: 5 AMPS.
 - 1-2 CONTACT RESISTANCE: 30 mOhm Max.
 - 1-3 INSULATION RESISTANCE: 100 MOhm Min. at 500VDC.
 - 1-4 BREAKDOWN VOLTAGE: 500 VAC PER MINUTE.
 - TIGHTENING TORQUES: 0.8~1.0Nm(7.08~8.85lbf.in.).
 - ENVIRONMENTAL:
 - 3-1 OPERATING TEMPERATURE: -40°C TO +105°C.
 - 3-2 SEALING REQUIREMENTS: IP67.
 - 3-3 LIFE TEST: 1,000 CYCLES MIN.
 - OTHER GENERAL SPEC. TO REFER "M12 SERIES SPEC.,"
 - FOR TECHNICAL DATA REFER TO YOUR LOCAL SINGATRON ELECTRONICS SALES OFFICE.
 - ALL DIMENSIONS ARE NOMINAL FOR REFERENCE ONLY UNLESS OTHERWISE STATED.
 - TO CONFORM TO SINGATRON HAZARDOUS SUBSTANCE FREE SPEC.
 - GREEN PRODUCT IDENTIFICATION LABEL ON PACKAGING: .

ITEM	DESCRIPTION	QTY	MATERIAL	PLATING & COLOR
H	LIQUID GLUE	1	N/A	BLACK
G	NUT	1	BRASS	NICKEL PLATING 60u"
F	O-RING	1	EPDM	BLACK
E	SHIELD	1	BRASS	NICKEL PLATING 60u"
D	O-RING	1	VITON	RED
C	PIN	5	COPPER ALLOY	5u" GOLD PLATING 20u" Pd/Ni PLATING OVER NICKEL 50u"
B	MALE BODY	1	PA66+GF	BLACK
A	FEMALE BODY	1	PA66+GF	BLACK
NO	DESCRIPTION	QTY	MATERIAL	PLATING & COLOR

UNLESS OTHERWISE SPECIFIED TOLERANCES

DECIMALS:	ANGLES:
X :±0.5	X :±2°
X.X :±0.3	X.X :±1°
X.XX :±0.2	

TITLE: M12 SERIES BULKHEAD SCREW MF CONN. (5PIN)

DWN: JF PART NO. 2MT302A-W05300H

CHKD: Yang SCALE 2:1 UNIT: mm

APVD: Harlen SIZE: A3 SHEET: 1 OF 1 REV: A

CUSTOMER COPY

