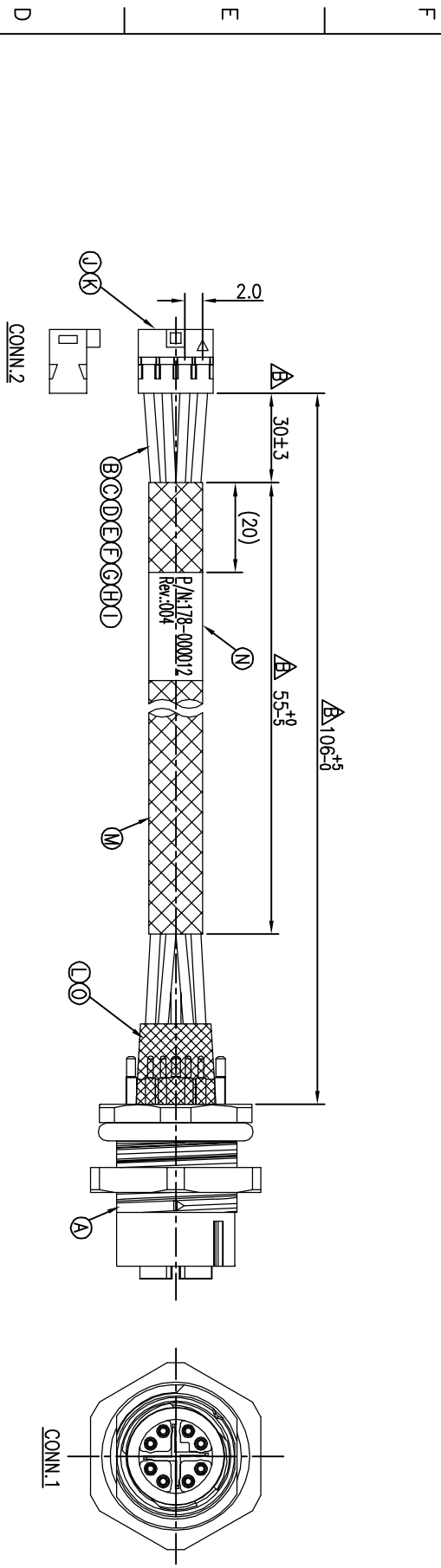
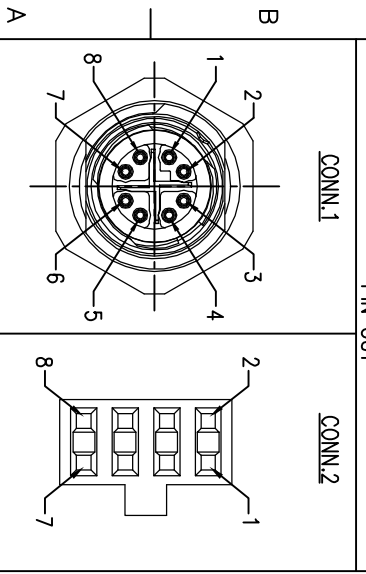


REV.	ECN NO OR DESCRIPTION	REVISED	DATE
A	PDR NO:1150731-2A	Blues	2016.03.16
B	ECN NO:S160362-C	Blues	2016.03.31



MX2+	8	RED	4
MX2-	7	BLUE	2
MX3-	6	ORANGE	3
MX3+	5	BLACK	1
MX1-	4	YELLOW	6
MX1+	3	GREEN	8
MX0-	2	BROWN	7
MX0+	1	WHITE	5
Signal	CONN.1	WIRE COLOR	CONN.2
		PIN OUT	



- NOTES:
- ELECTRICAL CHARACTERISTICS
TEMPERATURE RANGE: -20°C TO +80°C
RATING: 60V AC/DC 2A
DIELECTRIC WITHSTANDING VOLTAGE: 500V AC FOR ONE MINUTE
 - SPECIFICATIONS:SEE "M12 SERIES SPECIFICATIONS".
 - TO CONFORM TO SINGATRON HAZARDOUS SUBSTANCE FREE SPEC.
 - GREEN PRODUCT IDENTIFICATION LABEL ON PACKAGING:

QTY	DESCRIPTION	MATERIAL	PLATING & COLOR
1	UV GLUE	N/A	N/A
1	LABEL	L15*W8	WHITE
1	HEAT SHRINK TUBE	300V 125°C Ø4.0	BLACK
8	HEAT SHRINK TUBE	300V 125°C Ø1.5	BLACK
1	HOUSING	TU2003HNO-2*Ø4R	BLACK
8	TERMINAL	Phosphor Bronze	GOLD FLASH
1	WIRE	UL1061 24AWG	ORANGE
1	WIRE	UL1061 24AWG	WHITE
1	WIRE	UL1061 24AWG	BLUE
1	WIRE	UL1061 24AWG	GREEN
1	WIRE	UL1061 24AWG	YELLOW
1	WIRE	UL1061 24AWG	RED
1	WIRE	UL1061 24AWG	BROWN
1	WIRE	UL1061 24AWG	BLACK
1	PHOENIX CONN.	PHOENIX P/N:1424177	N/A

DECIMALS:	ANGLES:	TITLE	M12 SERIES FRONT MOUNT MALE CONN. 8PIN
X :±0.5	X :±2°	DMN	Blues
XX :±0.3	XX :±1°	CHKD	Harden
X:XX :±0.2		APVD	Stewe

Singatron Enterprise Co., Ltd.
信亨企業股份有限公司

PART NO.2MTS100-W00001H

SCALE 2:1 UNIT: mm

SIZE: A3 SHEET:1 OF 1 REV: B

CUSTOMER COPY