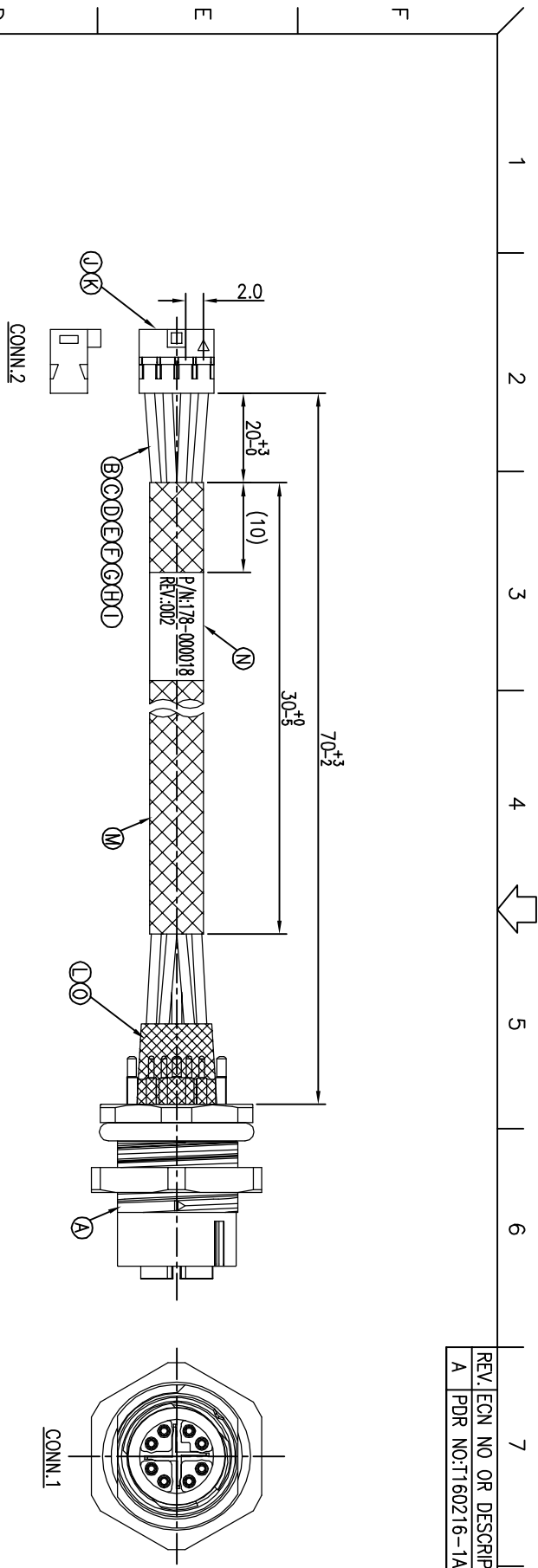
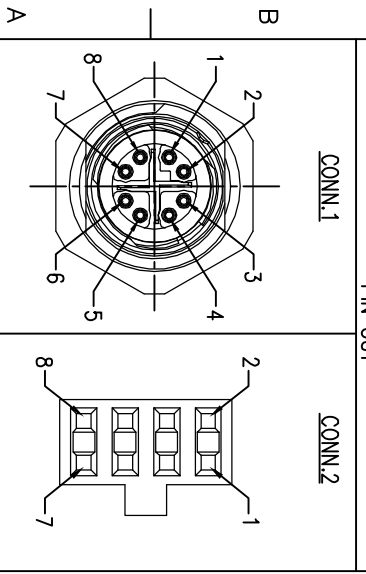


REV: ECN NO OR DESCRIPTION	REVISED	DATE
A PDR NO:1160216-1A	Blues	2016.04.27



MX2+	8	RED	4
MX2-	7	BLUE	2
MX3-	6	ORANGE	3
MX3+	5	BLACK	1
MX1-	4	YELLOW	6
MX1+	3	GREEN	8
MX0-	2	BROWN	7
MX0+	1	WHITE	5
Signal	CONN.1	WIRE COLOR	CONN.2
		PIN OUT	



- NOTES:
1. ELECTRICAL CHARACTERISTICS TEMPERATURE RANGE: -20°C TO +80°C
 2. DIELECTRIC WITHSTANDING VOLTAGE: 500V AC FOR ONE MINUTE RATING: 60V AC/DC 2A
 3. SPECIFICATIONS:SEE "M12 SERIES SPECIFICATIONS".
 4. TO CONFORM TO SINGATRON HAZARDOUS SUBSTANCE FREE SPEC.
 5. GREEN PRODUCT IDENTIFICATION LABEL ON PACKAGING:

O	UV GLUE	1	N/A	N/A
N	LABEL	1	L15*W8	WHITE
M	HEAT SHRINK TUBE	1	300V 125°C Ø4.0	BLACK
L	HEAT SHRINK TUBE	8	300V 125°C Ø1.5	BLACK
K	HOUSING	1	TU2003HNO-2*04R	BLACK
J	TERMINAL	8	Phosphor Bronze	GOLD FLASH
I	WIRE	1	UL1061 24AWG	ORANGE
H	WIRE	1	UL1061 24AWG	WHITE
G	WIRE	1	UL1061 24AWG	BLUE
F	WIRE	1	UL1061 24AWG	GREEN
E	WIRE	1	UL1061 24AWG	YELLOW
D	WIRE	1	UL1061 24AWG	RED
C	WIRE	1	UL1061 24AWG	BROWN
B	WIRE	1	UL1061 24AWG	BLACK
A	PHOENIX CONN.	1	PHOENIX P/N:1424177	N/A
NO	DESCRIPTION	QTY	MATERIAL	PLATING & COLOR

UNLESS OTHERWISE SPECIFIED TOLERANCES

DECIMALS:	ANGLES:
X :±0.5	X :±2°
XX :±0.3	XX :±1°
X.XX :±0.2	

Singatron Enterprise Co., Ltd.
 信亨企業股份有限公司
 TITLE M12 SERIES FRONT MOUNT MALE CONN. 8PIN
 HEXAGONAL BACKSHELL
 DMN Blues PART NO.2MTS1300-W00004H
 CHKD Harden SCALE 2:1 UNIT: mm
 APVD Stewe SIZE: A3 SHEET:1 OF 1 REV: A
CUSTOMER COPY