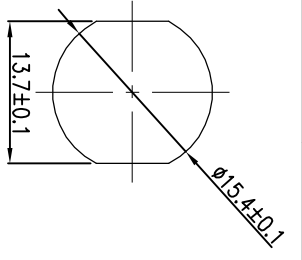
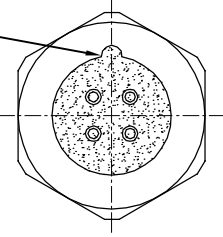


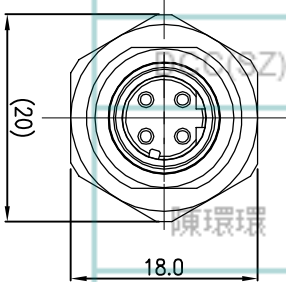
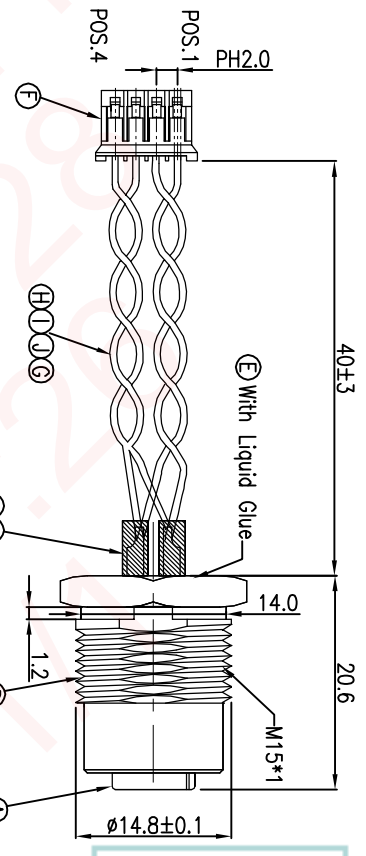
REV.	ECN NO.	OR DESCRIPTION	REVISED	DATE
A	PDR NO.:	T150204-4A	Vicky	2015.02.05
B	ECN NO.:	S150824-C	Harlen	2015.8.17



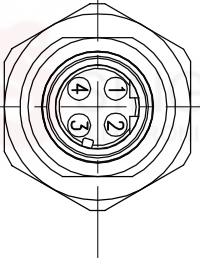
Recommend Panel Cut-out



The key is for anti-rotation after glued,  
Point to any corner of the hexagon



1	YELLOW	2
2	GREEN	4
3	RED	1
4	BLACK	3
CONN.2 WIRE COLOR		CONN.1



Pin Assignments  
Front View

- NOTES:
- ELECTRICAL CHARACTERISTICS  
TEMPERATURE RANGE: -40°C TO +100°C(PANEL)  
RATING: 60V AC/DC 5A
  - SPECIFICATIONS:SEE "M12 SERIES SPECIFICATIONS".
  - TO CONFORM TO SINGATRON HAZARDOUS SUBSTANCE FREE SPEC.
  - GREEN PRODUCT IDENTIFICATION LABEL ON PACKAGING:
  - FOR PANEL THICKNESS MAX OF 3.5mm
  - NUT TORQUE: 11.5kgf.cm Max.

J	WIRE	1	UL1007 26AWG	GREEN
I	WIRE	1	UL1007 26AWG	YELLOW
H	WIRE	1	UL1007 26AWG	RED
G	WIRE	1	UL1007 26AWG	BLACK
F	CONNECTOR	4	COPPER	TIN
E	LIQUID GLUE	1	N/A	WHITE
D	SHIELD	1	BRASS	NICKEL PLATING
C	SHRINK TUBE	4	φ2.4*10mm 纏	BLACK
B	FEMALE PIN	4	Phosphor Bronze	6u" GOLD PLATING OVER NICKEL PLATING
A	BODY	1	PA66+GF	BLACK

NO	DESCRIPTION	QTY	MATERIAL	PLATING & COLOR
UNLESS OTHERWISE SPECIFIED TOLERANCES				
Singatron Enterprise Co., Ltd. 信登企業股份有限公司				

DECIMALS:	ANGLES:
X : ±0.5	X : ±2°
X.X : ±0.3	X.X : ±1'
X.XX : ±0.2	

TITLE	M12 D-CODED SERIES FRONT MOUNT FEMALE CONN. (4PIN) HEXAGONAL BACKSHELL
DWN	Harlen
CHKD	JF
APVD	Steve
SCALE 2:1 UNIT: mm	
SHEET: 1 OF 1 REV: B	

CUSTOMER COPY