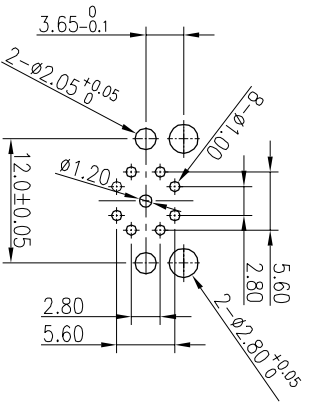
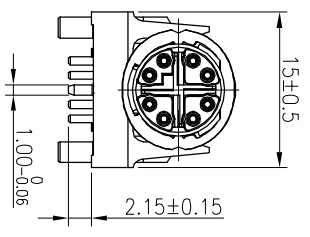
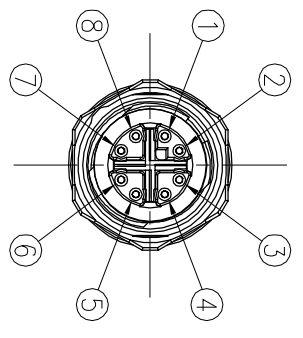
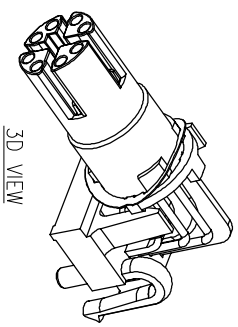
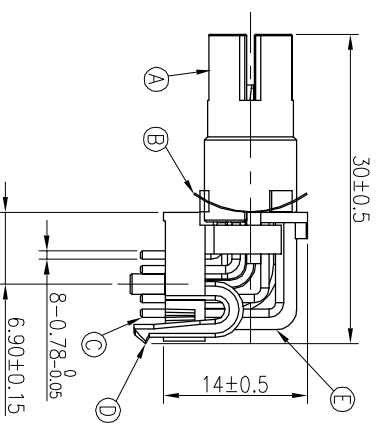


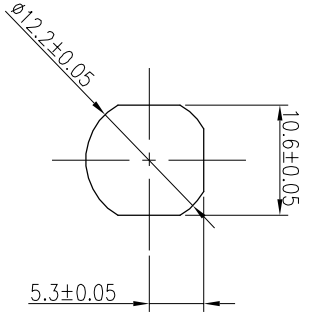
配件型式出貨



PCB LAYOUT
TOL:±0.05



PIN Assignments
Front View



Recommend Panel Cut-Out

- NOTES:
1. WATERPROOF RATE: IP54
 2. ELECTRICAL CHARACTERISTICS
MAX VOLTAGE: 48V AC/DC
MAX CURRENT: 0.5A
CONDUCTANCE RESISTANCE: <10m Ohm
INSULATION WITHSTAND: >100M Ohm
TEMPERATURE RANGE: -40°C TO +85°C
TRANSMISSION CHARACTERISTICS: CAT6A
 3. SPECIFICATIONS: IEC 61076-2-109:2014
 4. TO CONFORM TO SINGATRON HAZARDOUS SUBSTANCE FREE SPEC.
 5. GREEN PRODUCT IDENTIFICATION LABEL ON PACKAGING:
 6. FOR PANEL THICKNESS Max. OF 1.5mm

I	SHIELD	1	ZINC ALLOY	NICKEL PLATING 60μ"
H	NUT	1	ZINC ALLOY	NICKEL PLATING 60μ"
G	GASKET	1	EPDM	BLACK
F	O-RING	1	SILICONE	RED
E	SHIELDING GROSS	1	ZINC ALLOY	NICKEL PLATING
D	COVER	1	PA66+GF	BLACK
C	FEMALE PIN	8	Phosphor Bronze	30μ" GOLD PLATED OVER NICKEL PLATING
B	SPRING WASHER	1	SUS	N/A
A	BODY	1	PA66+GF	BLACK
NO	DESCRIPTION	QTY	MATERIAL	PLATING & COLOR
UNLESS OTHERWISE SPECIFIED TOLERANCES				
Singatron Enterprise Co., Ltd. 信營企業股份有限公司				
TITLE M12 SERIES FRONT MOUNT FEMALE CONN.(8PIN)				
DWG JF				
CHKD Cery				
APVD William				
DECIMALS: ANGLES: :±0.5 X :±2° X.X :±0.3 X.X :±1' X.XX :±0.2				
PART NO.2MT3754-W08200H				
SCALE 2:1 UNIT: mm				
SIZE: A3 SHEET: 1 OF 1 REV: A				
CUSTOMER COPY				

REV	ECN NO	OR DESCRIPTION	REVISED	DATE
A		PDR NO.:T181120-4A	JF	2020.01.16