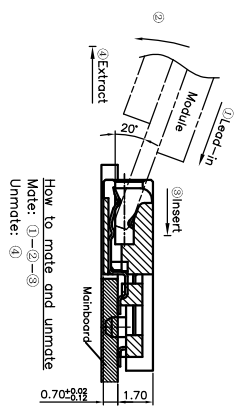
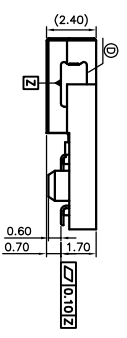
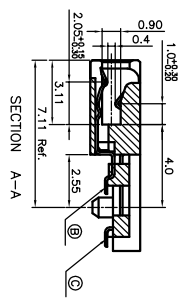
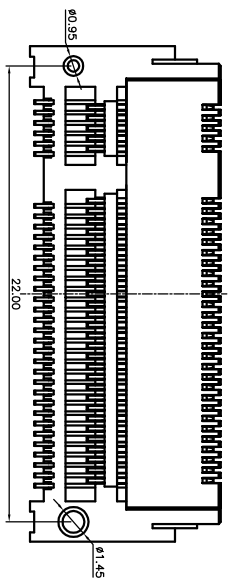
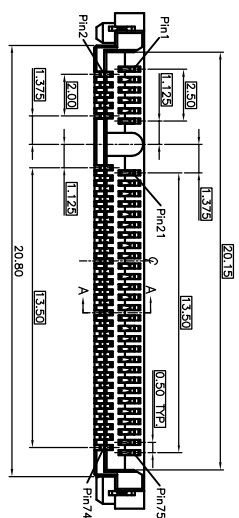
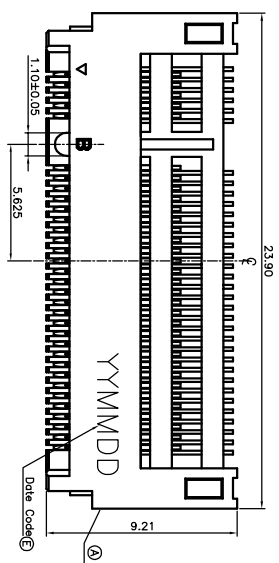


| | | | | |
|-----|--------|----------------|---------|------------|
| REV | EGN NO | OR DESCRIPTION | REVISED | DATE |
| A | PDR | RELEASE | MY-C | 2013.12.25 |

SPECIFICATIONS:

- ELECTRICAL CHARACTERISTICS:**
 - 1-1. CURRENT RATING: 0.5A(Per pin).
 - 1-2. VOLTAGE RATING: 50V AC(Per pin).
 - 1-3. LCR: 55mΩ Max.(Initial), 20mΩ Max. change allowed(Final)
 - 1-4. INSULATION RESISTANCE: 500MΩ MIN. @ 500V DC.
 - 1-5. DIELECTRIC WITHSTANDING VOLTAGE: 300V AC FOR 1 MINUTE.
- MECHANICAL CHARACTERISTICS:**
 - 2-1. INSERTION FORCE: 20N MAX.
 - 2-2. WITHDRAWAL FORCE: 20N MAX.
 3. LIFE TEST: 60 CYCLES.
 4. OTHER GENERAL SPEC. TO REFER "2NF1500 SERIES SPEC".
 5. TO CONFORM TO THE SINGATRON HAZARDOUS SUBSTANCE FREE SPEC.
 6. HALOGEN FREE PRODUCT IDENTIFICATION LABEL ON PACKAGING.
 7. PACKAGE: SEE "2NF1500 SERIES" PACKAGE.
 8. FOR REFLOW SOLDERING LEAD-FREE PROCESS.



- SUFFIX: HALOGEN FREE
- PACKAGE
- 1: TAPE AND REEL
- HOUSING COLOR
- 1: BLACK
- CONTACT PLATING
- 1: GOLD FLASH ON CONTACT AREA,
- GOLD FLASH ON SOLDER AREA

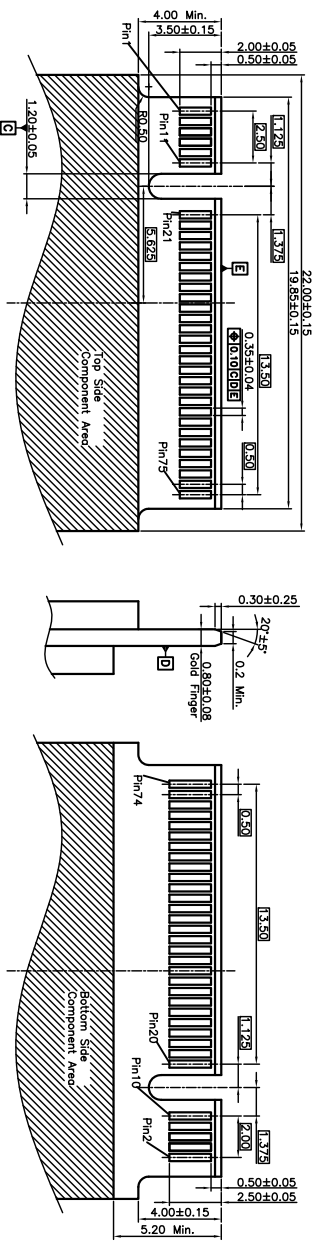
PART NO.
2NF1500-000111F

| | | | |
|---|---------------|---------|-------------------------|
| E | INK | | BLACK |
| D | LEG | 2 | BRASS |
| C | Upper CONTACT | 34 | COPPER ALLOY |
| B | Lower CONTACT | 33 | COPPER ALLOY |
| A | HOUSING | 1 | HIGH TEMP THERMOPLASTIC |
| NO | DESCRIPTION | QTY | MATERIAL |
| UNLESS OTHERWISE SPECIFIED TOLERANCES | | | |
| DECIMALS: | | ANGLES: | |
| X | :±0.5 | X | :±2° |
| X.X | :±0.3 | X.X | :±1' |
| X.XX | :±0.2 | | |
| TITLE NGF Socket(M.2 Connector)Mtd-plane,STD B key | | | |
| DWG WK-C 2013.12.25 PART NO. 2NF1500-000111F | | | |
| CHKD SCALE 1:1 UNIT: mm | | | |
| APVD ANGELABO13.12.25 SIZE: A3 SHEET: 1 OF 2 REV: A | | | |

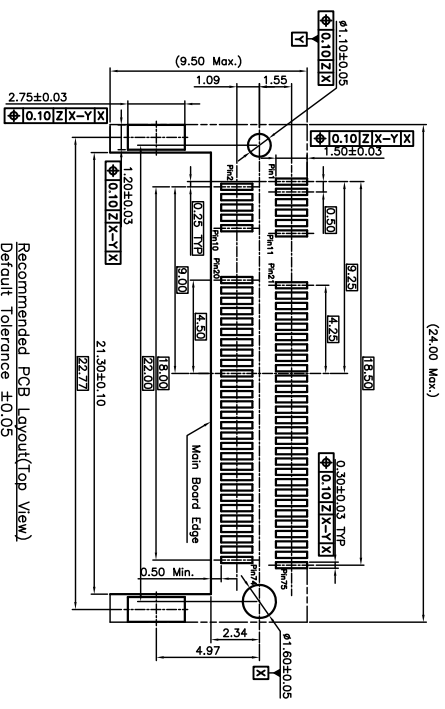
Singatron Enterprise Co., Ltd.
信音企業股份有限公司

CUSTOMER COPY

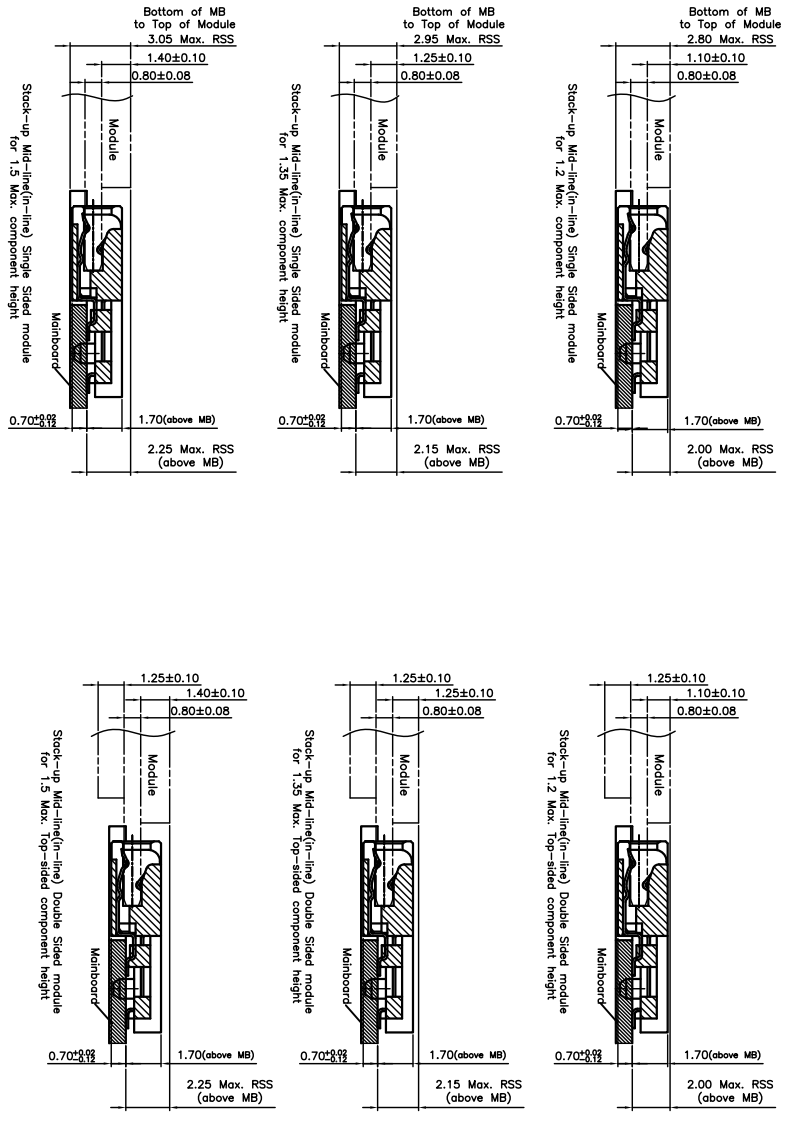
| | | |
|-----------------------------|---------|------------|
| REV. ECN NO. OR DESCRIPTION | REVISED | DATE |
| A PDR RELEASE | INV-C | 2013.12.25 |



Recommended Module Finger Layout



Recommended PCB Layout (Top View)
Default Tolerance ±0.05



| NO | DESCRIPTION | QTY | MATERIAL | PLATING & COLOR |
|--|---------------|----------|------------------|-----------------|
| UNLESS OTHERWISE SPECIFIED TOLERANCES | | | | |
| DECIMALS: ANGLES: | | | | |
| X | :±0.5 | X | :±2° | |
| XX | :±0.3 | XX | :±1° | |
| XXX | :±0.2 | | | |
| TITLE NGF Socket(M.2 Connector)/Mid-plane, STD B Key | | | | |
| DWN | HW-C-20131225 | PART NO. | 2NPF1500-000111F | |
| CHKD | | SCALE | 1:1 | UNIT: mm |
| APVD | HW-C-20131225 | SIZE: | A3 | SHEET: 2 OF 2 |
| REV: A | | | | |
| CUSTOMER COPY | | | | |

