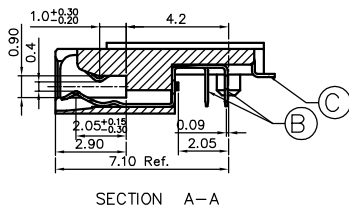
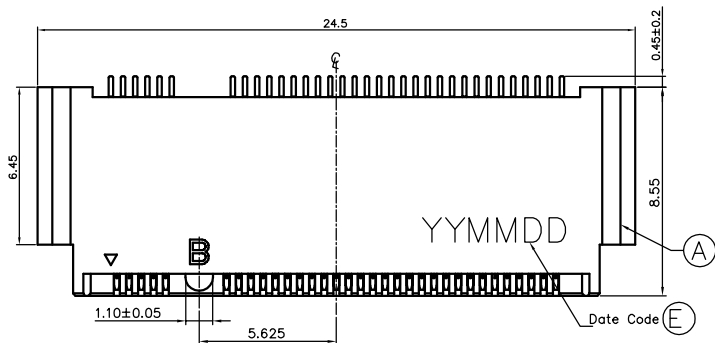
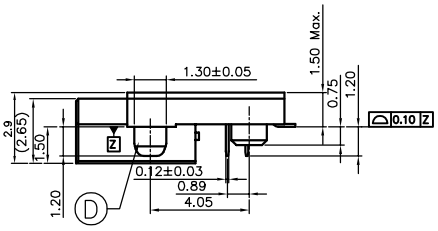
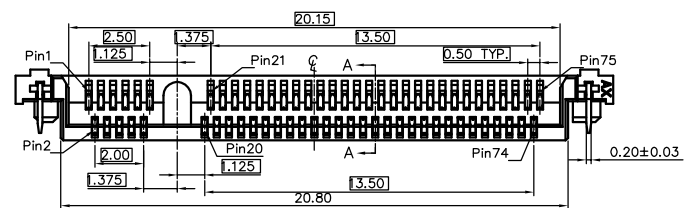


| | | | |
|------|-----------------------|---------|------------|
| REV. | ECN NO OR DESCRIPTION | REVISED | DATE |
| A | PDR RELEASE | IVY-C | 2014.06.18 |



SPECIFICATIONS:

- ELECTRICAL CHARACTERISTICS:
 - CURRENT RATING: 0.5A(Per pin).
 - VOLTAGE RATING: 50V AC(Per pin).
 - LLCR: 55mΩ Max,(Initial), 20mΩ Max. change allowed(Final)
 - INSULATION RESISTANCE: 500MΩ MIN. @ 500V DC.
 - DIELECTRIC WITHSTANDING VOLTAGE: 300V AC FOR 1 MINUTE.
- MECHANICAL CHARACTERISTICS:
 - INSERTION FORCE: 20N MAX.
 - WITHDRAWAL FORCE: 20N MAX.
- LIFE TEST: 60 CYCLES.
- OTHER GENERAL SPEC. TO REFER "2NF1503 SERIES SPEC".
- TO CONFORM TO THE SINGATRON HAZARDOUS SUBSTANCE FREE SPEC.
- HALOGEN FREE PRODUCT IDENTIFICATION LABEL ON PACKAGING:
- PACKAGE: SEE "2NF1503-000111F" PACKAGE.
- FOR REFLOW SOLDERING LEAD-FREE PROCESS.

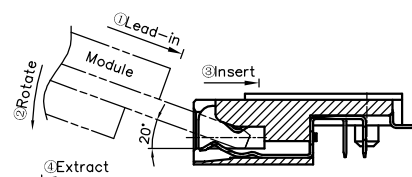
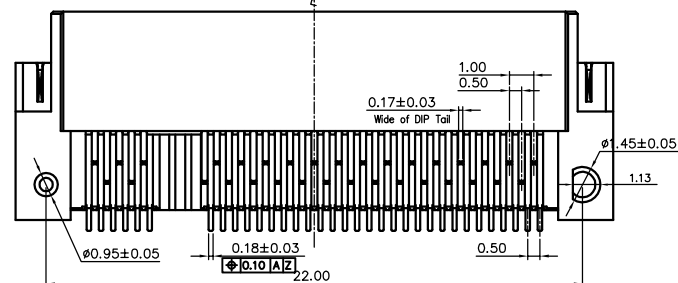


PART NO.
2NF1503-000111F

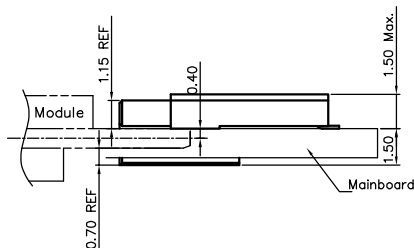
KEY TYPE
0: B-KEY

- SUFFIX: HALOGEN FREE
- PACKAGE
1: TAPE AND REEL
- HOUSING COLOR
1: BLACK
- CONTACT PLATING
1: GOLD FLASH ON CONTACT AREA,
MATTE TIN ON SOLDER AREA
NICKEL UNDERPLATED OVERALL

YY MM DD
Day
Month
Year



How to mate and unmate
Mate: ①- ② - ③
Unmate: ④



| | | | | |
|---------------------------------------|---------------|-------|---|---|
| E | INK | | | BLACK |
| D | LEG | 2 | C2680-EH 0.20t | 30~120u" Matte Tin plating all over nickel(30~150u"). |
| C | Upper CONTACT | 34 | C5210-SH 0.12t | SEE PART NO. |
| B | Lower CONTACT | 33 | C5210-SH 0.12t | SEE PART NO. |
| A | HOUSING | 1 | LCP E471i GF; UL94 V-0 | BLACK |
| NO | DESCRIPTION | QTY | MATERIAL | PLATING & COLOR |
| UNLESS OTHERWISE SPECIFIED TOLERANCES | | | Singatron Enterprise Co., Ltd. 信音企業股份有限公司 | |
| DECIMALS: | ANGLES: | TITLE | NGFF Socket(M.2 Connector)Mid-plane,1.5H, B Key | |
| X :±0.5 | X :±2° | DWN | IVY-C 2014.06.18 | PART NO. 2NF1503-000111F |
| XX :±0.3 | XX :±1° | CHKD | | SCALE N/A UNIT: mm |
| XXX :±0.2 | | APVD | ANGELA2014.06.18 | SIZE: A3 SHEET: 1 OF 2 REV: A |
| CUSTOMER COPY | | | | |

