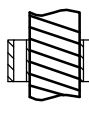
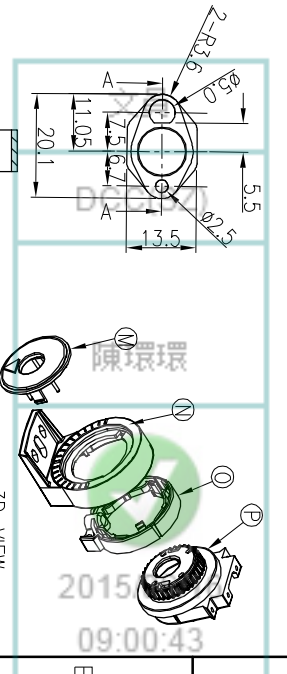
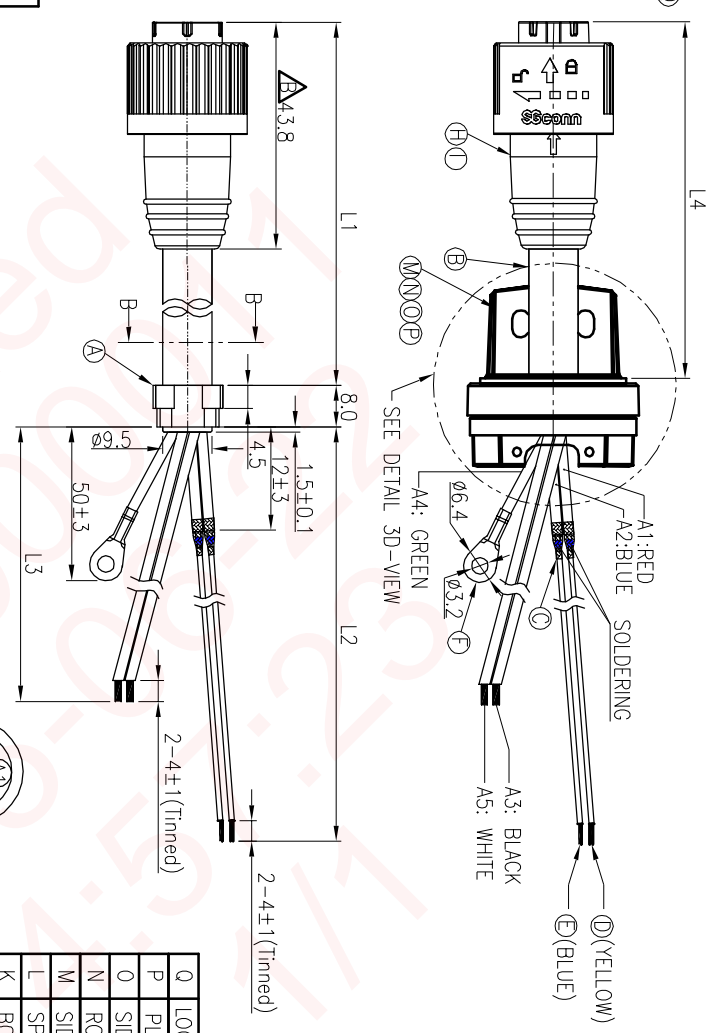


REV.	ECN NO OR DESCRIPTION	REVISED	DATE
A	PDR NO.:S141121-1A~1C	Vicky	2015.04.03
B	ECN NO.:S150627-RA	Vicky	2015.06.11



SECTION A-A



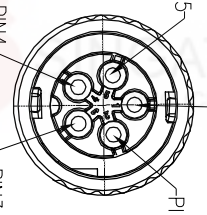
CUSTOMER P/N	SINGATRON P/N	L1	L2	L3	L4
MHASH100610100	2QM3016-W05301H	72 ^{±3}	180±5	65±3	67 ^{±3}
MHASH100610110	2QM3016-W05302H	142 ^{±3}	180±5	65±3	137 ^{±3}
MHASH100610120	2QM3016-W05303H	220 ^{±3}	110±5	65±3	215 ^{±3}



SECTION B-B

- NOTES:
- ELECTRICAL CHARACTERISTICS:
 - 1-1 CURRENT RATING: 6 AMPS.
 - 1-2 CONTACT RESISTANCE: 3 Ohm Max.
 - 1-3 INSULATION RESISTANCE: 100 Mohm Min. at 500VDC.
 - 1-4 BREAKDOWN VOLTAGE: 500 VAC PER MINUTE.
 - ENVIRONMENTAL:
 - 2-1 OPERATING TEMPERATURE: -20°C TO +80°C.
 - 2-2 STORAGE TEMPERATURE: -40°C TO +80°C.
 - 3. LIFE TEST: 1,000 CYCLES MIN.
 - OTHER GENERAL SPEC. TO REFER "CIRCULAR SERIES GENERAL SPEC."
 - FOR TECHNICAL DATA REFER TO YOUR LOCAL SINGATRON ELECTRONICS SALES OFFICE.
 - ALL DIMENSIONS ARE NOMINAL FOR REFERENCE ONLY UNLESS OTHERWISE STATED.
 - TO CONFORM TO SINGATRON HAZARDOUS SUBSTANCE FREE SPEC.
 - PULL FORCE TEST: 16kgf min. FOR 2MINS. WIRE MOVEMENT MUST BE LESS THAN 2mm.
 - CORE WIRES ORIENTATION MUST BE ARRANGED AS SECTION B-B INDICATED.
 - GREEN PRODUCT IDENTIFICATION LABEL ON PACKAGING: **GREEN PASS**.

CONN	WIRE COLOR	SOLDERING
1	GREEN	/
2	WHITE	/
3	RED	YELLOW
4	BLUE	BLUE
5	BLACK	/



Pin Assignments
Front View

Q	LOCK NUT	1	PA66	GRAY(PANTONG 427C)
P	PLUG SHAFT	1	PC LEXAN 940(WHITE)	MHTPH100610300
O	SIDE CAP HOLDER	1	PC LEXAN 940(WHITE)	MHTPH100451410
N	ROUND END CAP	1	PC LEXAN 940(WHITE)	MHTPH100610100
M	SIDE PLATE	1	PC LEXAN 940(WHITE)	MHTPH100610400
L	SPRING	1	SUS	N/A
K	BODY	1	PA66	GRAY(PANTONG 427C)
J	MALE PIN	5	MALE PIN	1~3u" GOLD PLATING OVER NICKEL PLATING
I	OVER MOLD	1	TPE	GRAY,PANTONE 427C
H	INNER MOLD	1	TPE	NATURAL
G	O-RING	1	SILICONE	BLUE
F	TERMINAL	1	R320411,T=0.3	TIN PLATED
E	WIRE	1	UL1430 24AWG	BLUE
D	WIRE	1	UL1430 24AWG	YELLOW
C	HEAT SHRINK TUBE	2	L=12MM	BLACK
B	CABLE	1	SJT(UL) 18AWG*5C OD:9.6mm	GRAY (PANTONE COLOR 427C)
A	SR MOLD	1	TPE	NATURAL

UNLESS OTHERWISE SPECIFIED TOLERANCES

Singatron Enterprise Co., Ltd.
信亨企業股份有限公司

QUICK SERIES MIDDLE SIZE
FEMALE CONN. MALE 5 PIN+CABLE

DECIMALS:	ANGLES:	TITLE	PART NO.	SCALE	UNIT:	SHEET:	REV.
X :±0.5	X :±2°	DMN	2QM3016-W053XXH	1:1	mm	1 OF 1	B
XX :±0.3	XX :±1°	CHKD					
XXX :±0.2		APVD					

CUSTOMER COPY