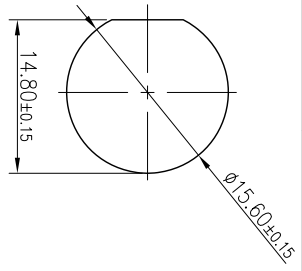
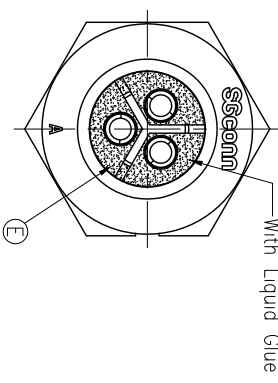
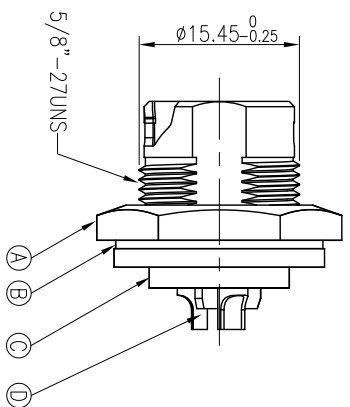
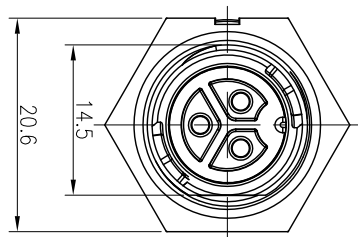
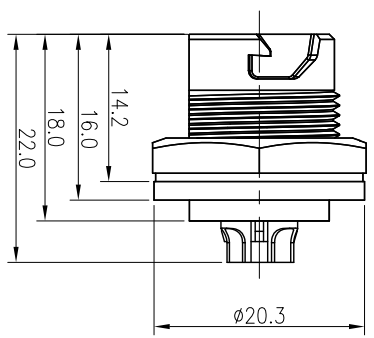


REV.	ECN NO.	OR DESCRIPTION	REVISED	DATE
A	PDR NO.:S131028-6B		Horlen	2015.1.21



RECOMMENDED PANEL CUT-OUT



- NOTES:
- ELECTRICAL CHARACTERISTICS:
    - CURRENT RATING: 10 AMPS.
    - CONTACT RESISTANCE: 30 mOhm Max.
    - INSULATION RESISTANCE: 100 Mohm Min at 500VDC.
    - BREAKDOWN VOLTAGE: 1000VAC PER MINUTE
  - MECHANICAL CHARACTERISTICS:
    - TIGHTENING TORQUES: 0.8~1.0Nm(7.08~8.85lbf.in.)
  - ENVIRONMENTAL:
    - OPERATING TEMPERATURE: -40°C TO +105°C.
    - SEALING REQUIREMENTS:IP67.
    - LIFE TEST: 1,000 CYCLES MIN.
    - FOR PANEL THICKNESS MAX OF 4.0mm
    - OTHER GENERAL SPEC TO REFER"QUICK SERIES GENERAL SPEC".
    - FOR TECHNICAL DATA REFER TO YOUR LOCAL SINGATRON ELECTRONICS SALES OFFICE.
    - ALL DIMENSIONS ARE NOMINAL FOR REFERENCE ONLY UNLESS OTHERWISE STATED.
    - TO CONFORM TO SINGATRON HAZARDOUS SUBSTANCE FREE SPEC.
    - GREEN PRODUCT IDENTIFICATION LABEL ON PACKAGING: .

E	LIQUID GLUE	1	N/A	BLACK
D	FEMALE PIN	3	Phosphor Bronze	1~3u" GOLD PLATING OVER NICKEL PLATING
C	BODY	1	PA66	BLACK
B	GASKET	1	SILICONG	BLACK
A	NUT	1	PA66	BLACK
NO	DESCRIPTION	QTY	MATERIAL	PLATING & COLOR
UNLESS OTHERWISE SPECIFIED TOLERANCES				
Singatron Enterprise Co., Ltd. 信譽企業股份有限公司				
TITLE QUICK SERIES STANDARD SIZE (SOLDER TYPE)				
DWN Horlen PART NO.:QJT3014-W03400H				
CHKD JF SCALE 2:1 UNIT: mm				
APVD STEVE SIZE: A3 SHEET:1 OF 1 REV:A				

CUSTOMER COPY