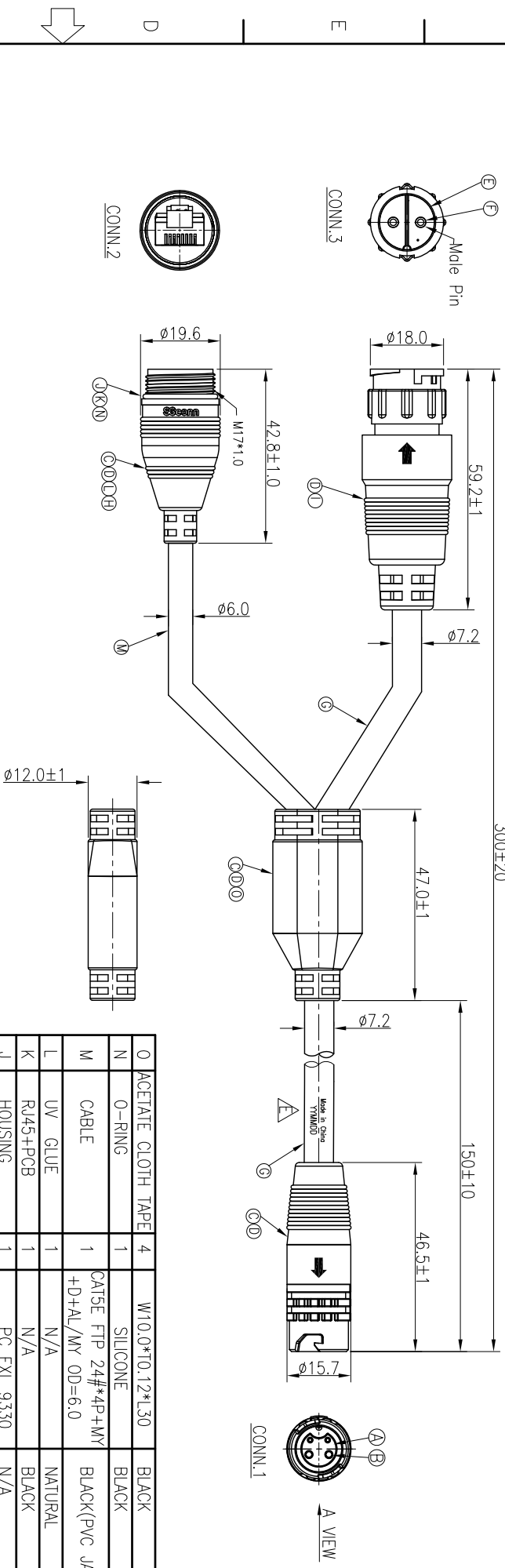


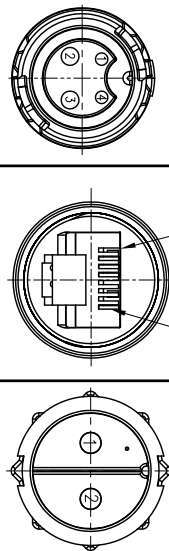
REV.	E/CN NO.	OR DESCRIPTION	REVISED	DATE
A	PDR NO.:	S160120-71	Ycky	2015.06.25
D	E/CN NO.:	A191002-C	Ycky	2019.10.10
E	E/CN NO.:	S202106-E15	Erod	2021.12.16



CONN.1	WIRE COLOR	CONN.2	WIRE COLOR	CONN.3	WIRE COLOR
4	BLACK(24#)	2	ORANGE(DMX+)		N/A
3	BLUE(17#)	3	GREEN/WHITE(GND)	2	BLUE
2	BROWN(17#)		N/A	1	BROWN
1	WHITE(24#)	1	ORANGE/WHITE(DMX-)		N/A

NOTES:

- ELECTRICAL CHARACTERISTICS:
- 1-1 CONDUCTOR RESISTANCE: 0.2 Ohm Max.(Conn.1 TO Conn.3), 0.5 Ohm Max.(Conn.1 TO Conn.2)
- 1-2 INSULATION RESISTANCE: 100 MOhm Min. at 500VDC.
- 1-3 BREAKDOWN VOLTAGE: 500 VAC PER MINUTE.
- 1-4 CURRENT RATING: 60V AC/DC Larger Pin:10A,Small Pin:5A(CONN.1)  
125V DC/1A(CONN.2)  
250V AC/DC 10A(CONN.3)
- ENVIRONMENTAL:
- 2-1 OPERATING TEMPERATURE: -40°C TO +105°C.
- 2-2 SEALING REQUIREMENTS: IP66&IP67.
- SPECIFICATIONS:SEE "QUICK SERIES GENERAL SPEC."
- GREEN PRODUCT IDENTIFICATION LABEL ON PACKAGING. **GR Pass**



PIN OUT

O	ACETATE CLOTH TAPE	4	W10.0*TD.12*1.30	BLACK
N	O-RING	1	SILICONE	BLACK
M	CABLE	1	CAT5E FTP 24#*4P+WY +D+AL/WY OD=6.0	BLACK(PVC JACKET)
L	UV GLUE	1	N/A	NATURAL
K	R45+PCB	1	N/A	BLACK
J	HOUSING	1	PC EXL 9330	N/A
I	OVER MOLD	1	PVC	BLACK
H	LIQUID GLUE	1	N/A	BLACK
G	CABLE	2	UL21996 17#*2C+P+ 24#*1P(UV) 0D7.2	BLACK (PVC JACKET)
F	MALE PIN	2	BRASS	(1~3)u" GOLD PLATING OVER NICKEL PLATING
E	BODY	1	NYLON+GF	BLACK
D	INNER MOLD	4	TPEE	NATURAL
C	OVER MOLD	3	TPEE	BLACK
B	FEMALE PIN	4	Phosphor Bronze	1~3u" GOLD PLATING OVER NICKEL PLATING
A	BODY	1	PA66	BLACK

Suzhou Singoton Auto Electronics CO.,LTD.  
蘇州信通汽車電子有限公司

TITLE: CIRCULAR STANDARD SIZE (QUICK TYPE)  
CIRCUIT BOARD FEMALE (2+2) PIN(10+5)A

DMW Erod PART NO. 2QT3030-W04813H  
CHKD JY SCALE 1:1 UNIT: mm

APVD JF SIZE: A3 SHEET: 1 OF 1 REV: E

CUSTOMER COPY