

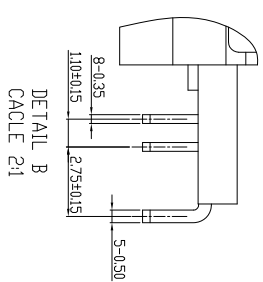
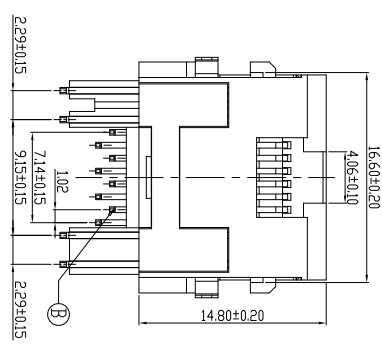
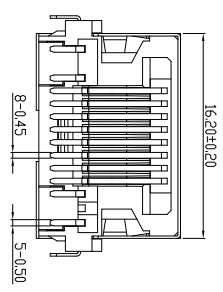
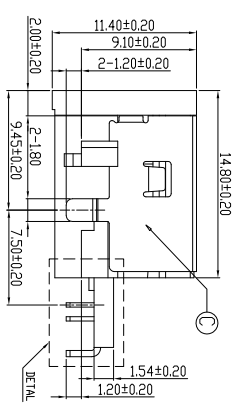
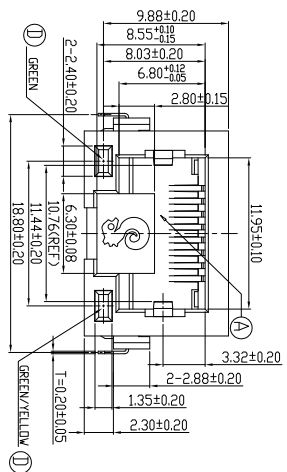
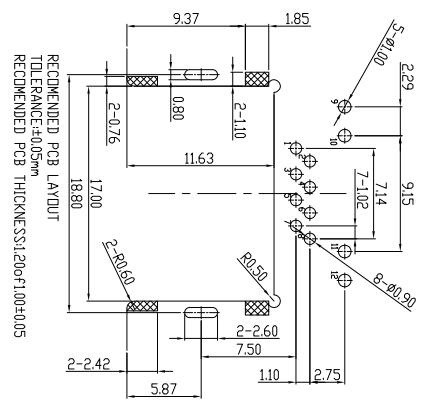
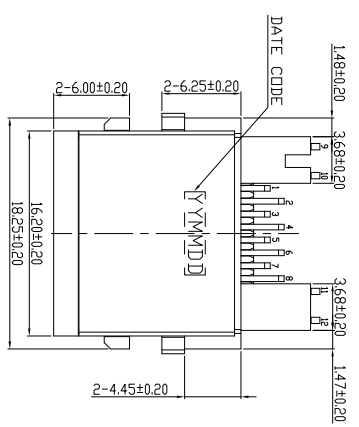
REV. A	ECON NO. OR DESCRIPTION	REVISED	DATE
A	PDR RELEASE	Even	2020.12.11

- SPECIFICATIONS:
- VOLTAGE RATING: 150 VAC MAX.
 - CURRENT RATING: 1.5 AMP MAX.
 - INSULATION RESISTANCE: 500M OHMS MIN. AT 500 VDC.
 - DIELECTRIC WITHSTANDING VOLTAGE: 500 VAC 60Hz 1 MINUTE.
 - DURABILITY: 5000 CYCLES.
 - OPERATING TEMPERATURE: -30°C TO +70°C.
 - TO CONFORM TO SINGAPORE HAZARDOUS SUBSTANCE FREE SPEC.
 - HALOGEN FREE PRODUCT IDENTIFICATION LABEL ON PACKAGING.
 - PACKAGE: SEE "2RJ1662-030111F" PACKAGE.
 - FOR REFLOW SOLDERING LEAD-FREE PROCESS.
 - MATS WITH MODULAR PLUG CONFORMING TO FCC PART 68, SUBPART F.
 - OTHER GENERAL SPEC. TO REFER "2RJ1662-030111F" SPEC.



PART NO.
2RJ1662-030111F
 SUFFIX: HALOGEN FREE
 PACKAGE
 1: TAPE & REEL
 HOUSING COLOR
 I: BLACK

CONTACT AREA PLATING
 I: 5u"Min. Au PLATING ON CONTACT AREA,
 50u"Min. MATTE TIN(Sn) PLATING ON SOLDER AREA.
 30u"Min. NICKEL UNDERPLATED OVERALL.



LED ELECTRICAL CHARACTERISTIC	
MODE	COLOR
9(+), 10(-)	GREEN
11(+), 12(-)	GREEN
11(-), 12(+)	YELLOW

D	LED	2	GREEN / GREEN/YELLOW	40u" Ag PLATED
C	SHIELD	1	SUS201	50u" IN PLATED
B	CONTACT	8	CS210	SEE PART NO.
A	HOUSING	1	PA10T UL 94V-0	BLACK
NO	DESCRIPTION	QTY	MATERIAL	PLATING & COLOR
UNLESS OTHERWISE SPECIFIED TOLERANCES				
DECIMALS: ANGLES:				
X	:±0.5	X	:±2°	
X.X	:±0.3	X.X	:±1°	
X.XX	:±0.2			
TITLE R45 JACK, W/LED, R/A, SINKING, DIP TYPE, H=9.10mm				
DWG ENR 2020.12.11 PART NO. 2RJ1662-030111F				
CHKD SCALE 3/1 UNIT: mm				
APVD MREJ2020.12.11 SIZE: A3 SHEET: 1 OF 1 REV: A				
CUSTOMER COPY				