

REV.	ECN NO OR DESCRIPTION	REVISED	DATE
A	PDR NO.T161118-3A	Allen	2017.09.21
B	ECN NO.S202103-E09	PAN	2021.06.03
C	ECN NO.S202109-R10	PAN	2021.10.15

SPECIFICATIONS:

- ELECTRICAL CHARACTERISTICS:
 - CURRENT RATING: 1.5A MAX.
 - VOLTAGE RATING: 150VAC MAX.
 - CONTACT RESISTANCE: 50mΩ MAX.(INITIAL).
100mΩ MAX.(AFTER LIFE TEST).
 - INSULATION RESISTANCE: 100MΩ MIN.
- MECHANICAL CHARACTERISTICS:
 - DURABILITY: 5000 CYCLES.
 - INSERTION FORCE: 2.25Kg MAX. WITH LATCH DEPRESSED.
 - WITHDRAWAL FORCE: 4.5Kg MAX. WITH LATCH DEPRESSED.
 - OPERATING TEMPERATURE: -30℃ ~ +70℃.
- MARKING: MARK "S" INSIDE OF THE CONNECTOR.
- PACKAGING : TAPE & REEL.
- TO CONFORM TO SINGATRON HAZARDOUS SUBSTANCE FREE SPEC.
- HALOGEN FREE PRODUCT IDENTIFICATION
MARK ON PRODUCT:
- HALOGEN FREE PRODUCT IDENTIFICATION LOGO
ON THE PACKAGING:
- FOR REFLOW SOLDERING LEAD-FREE PROCESS.
- PRINTED DATE CODE "YY MM DD" ON TOP OF THE CONNECTOR.

DD: DAY
MM: MONTH
YY: YEAR

10/100Base-T	100Base-T4
Pin 1 TX+	Pin 1 TX_D1+
Pin 2 TX-	Pin 2 TX_D1-
Pin 3 RX+	Pin 3 RX_D2+
Pin 4 n/c	Pin 4 BL_D3+
Pin 5 n/c	Pin 5 BL_D3-
Pin 6 RX-	Pin 6 RX_D2-
Pin 7 n/c	Pin 7 BL_D4+
Pin 8 n/c	Pin 8 BL_D4-

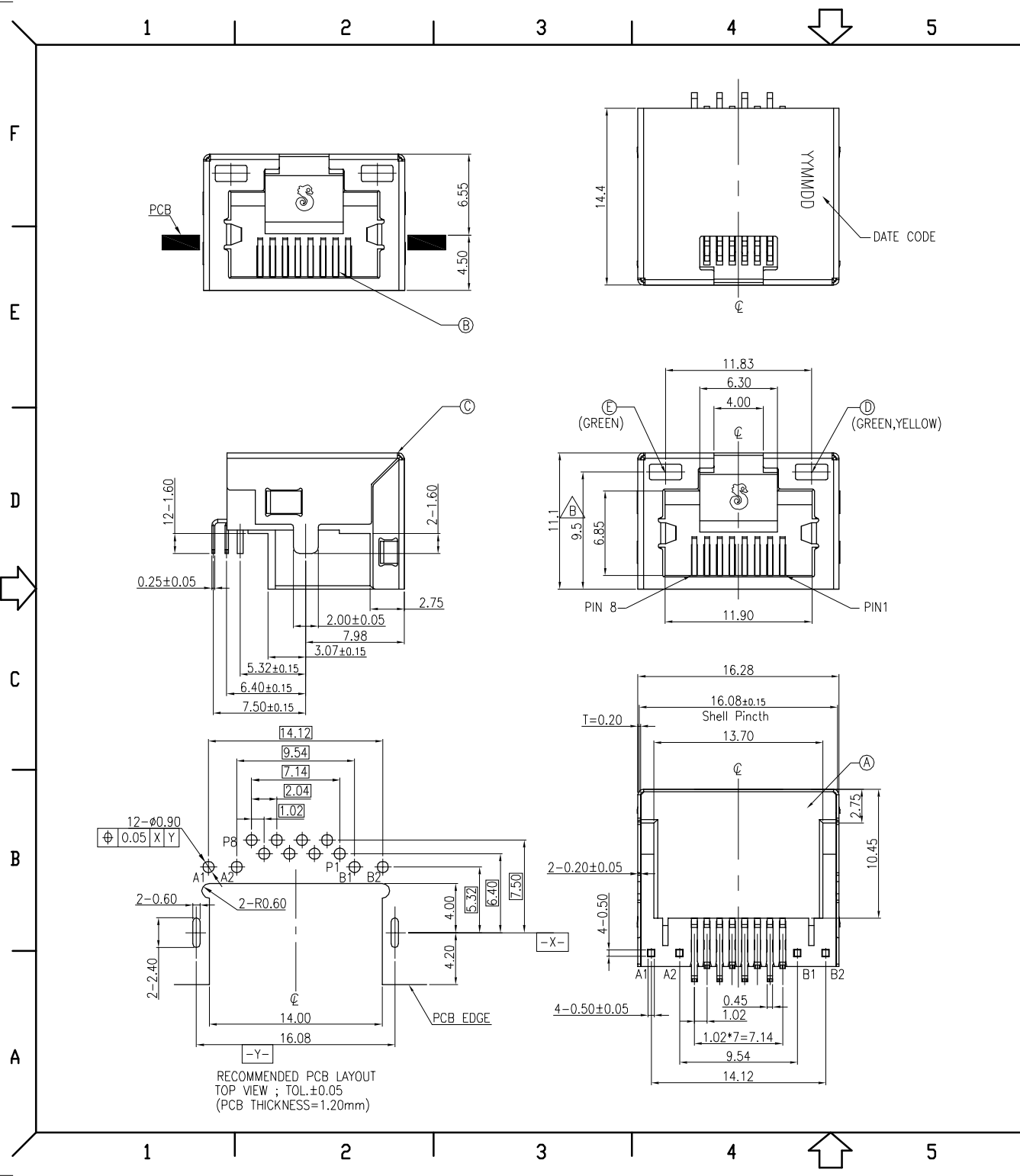
LED ELECTRICAL CHARACTERISTIC			
NODE	COLOR	A1↔ A2	B1↔ B2
A1(+) A2(-)	GREEN	A1↔ A2	
B1(+) B2(-)	GREEN	B1↔ B2	
B1(-) B2(+)	YELLOW	B1↔ B2	

E	LED	1	GREEN LIGHT
D	LED	1	GREEN / YELLOW LIGHT
C	SHIELDING	1	SUS 0.2t NI PLATING ALL OVER
B	8P8C CONTACT	8	PHOSPHOR BRONZE 0.25t 30µin Min. Au Plating ON CONTACT AREA; 120µin Min. MATTE Tin Plating ON SOLDER TAIL AREA; 50µin Min. Ni UNDER PLATING
A	BODY	1	HIGH TEMP.THERMOPLASTIC UL 94V-0 & BLACK
NO	DESCRIPTION	QTY	MATERIAL PLATING & COLOR

UNLESS OTHERWISE SPECIFIED TOLERANCES

Singatron Enterprise Co., Ltd.
信音企業股份有限公司

DECIMALS:	ANGLES:	TITLE	RJ45 JACK WITH LED		
X : ±0.5	X : ±2°	DWN	PAN	PART NO. 2RJ3006-148211F	
X.X : ±0.3	X.X : ±1°	CHKD	Allen	SCALE 4:1	UNIT: mm
X.XX : ±0.2		APVD	boye	SIZE: A3	SHEET: 1 / 1
					REV: C
				CUSTOMER COPY	



RECOMMENDED PCB LAYOUT
TOP VIEW ; TOL:±0.05
(PCB THICKNESS=1.20mm)