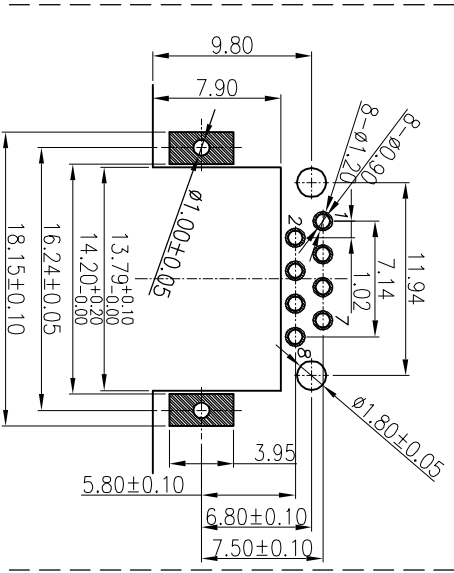
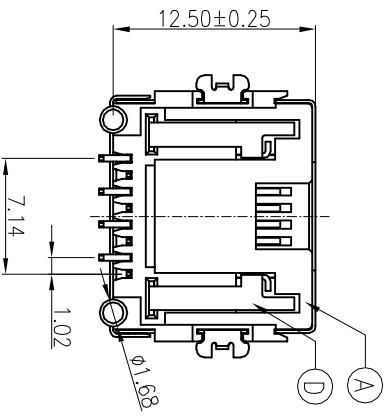
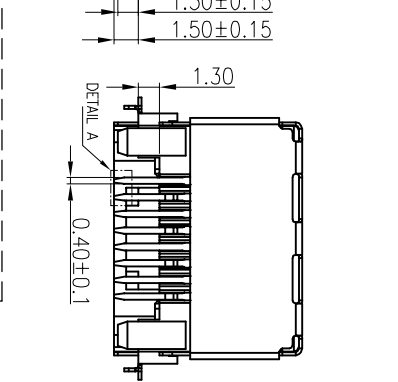
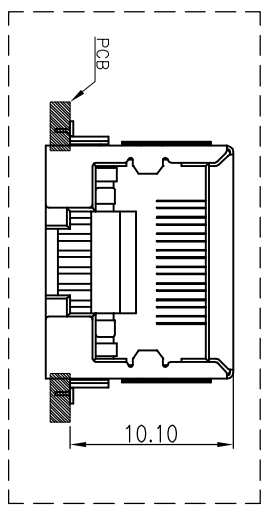
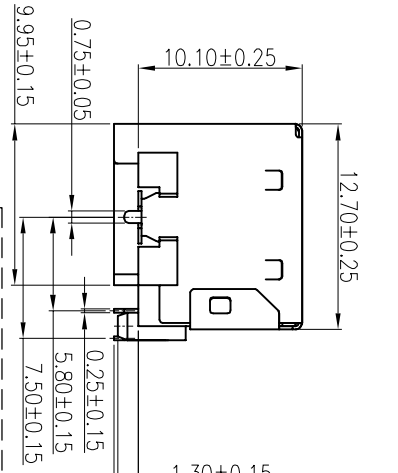
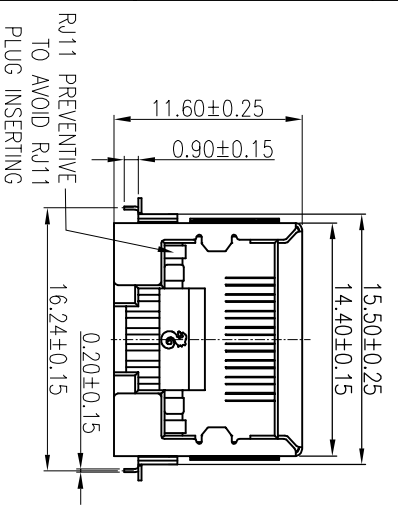
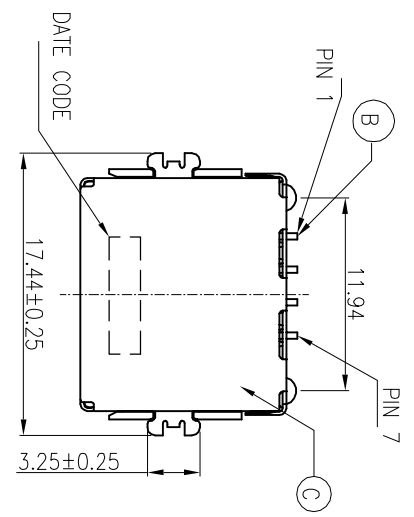
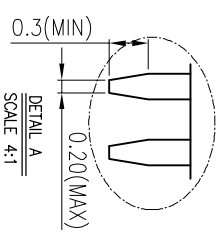


REV.	ECN NO.	OR DESCRIPTION	REVISED	DATE
A	PDR NO.T181012-1A	PAN		2019.04.08



RECOMMENDED PCB LAYOUT
TOP VIEW : TOL.±0.05
(PCB THICKNESS=1.20mm)



- SPECIFICATIONS:**
- ELECTRICAL CHARACTERISTICS:**
 - CURRENT RATING: 0.5A MAX.
 - VOLTAGE RATING: 150V MAX.
 - CONTACT RESISTANCE: 50mΩ MAX.(INITIAL), 100mΩ MAX.(AFTER LIFE TEST).
 - INSULATION RESISTANCE: 100MΩ MIN.
 - MECHANICAL CHARACTERISTICS:**
 - DURABILITY: 5000 CYCLES.
 - INSERTION FORCE: 2.25kg MAX. WITH LATCH DEPRESSED.
 - WITHDRAWAL FORCE: 4.5kg MAX. WITH LATCH DEPRESSED.
 - OPERATING TEMPERATURE: -30°C ~ +70°C.
 - MARKING: MARK "S" INSIDE OF THE CONNECTOR.
 - PACKAGING : TAPE & REEL.
 - TO CONFORM TO SINGATRON HAZARDOUS SUBSTANCE FREE SPEC
 - HALOGEN FREE PRODUCT IDENTIFICATION
 - MARK ON PRODUCT:
 - ON THE PACKAGING:
 - FOR REFLOW SOLDERING LEAD-FREE PROCESS.
 - PRINTED DATE CODE "YY MM DD" ON TOP OF THE CONNECTOR.

NO	DESCRIPTION	QTY	MATERIAL
D	LOCK	2	COPPER ALLOY
C	SHELL	1	COPPER ALLOY
B	8P8C CONTACT	8	PHOSPHOR BRONZE 0.30t 30u" GOLD ON CONTACT AREA. Motte Sn 120u" ON SOLDER TAIL. ALL OVER Ni 50u" MIN.
A	BODY	1	HIGH TEMP.THERMOPLASTIC UL 94V-0 & BLACK

UNLESS OTHERWISE SPECIFIED TOLERANCES

Singatron Enterprise Co., Ltd
信亨企業股份有限公司

DECIMALS:	ANGLES:	TITLE
X : ±0.5	X : ±2°	DWM
X.X : ±0.3	X.X : ±1°	pan
X.XX : ±0.2		James
		boye

PART NO.	SCALE	UNIT	SHEET	REV
2RJ3022-038111F	4:1	mm	1 / 1	A

CUSTOMER COPY