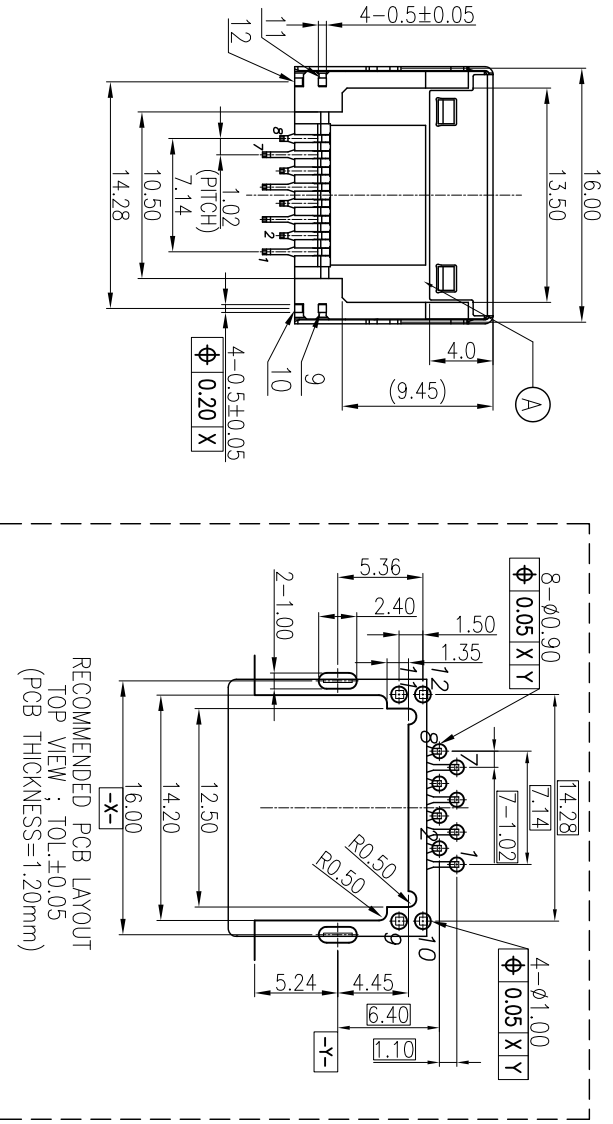
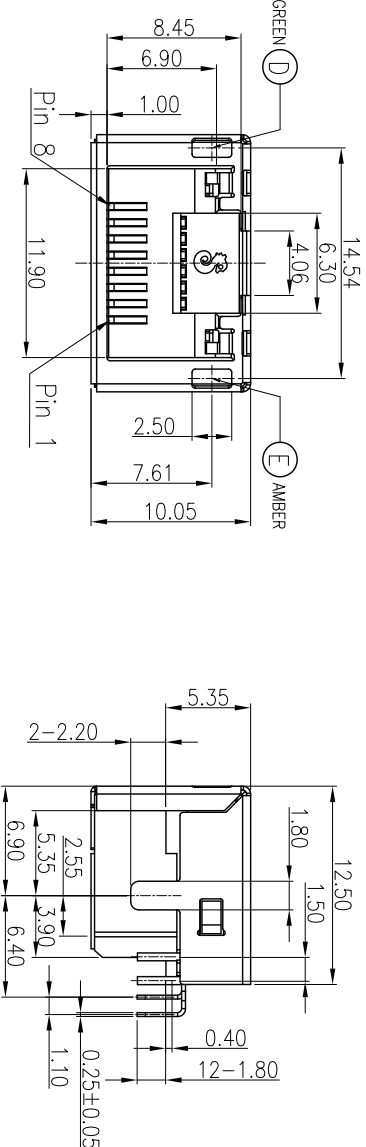
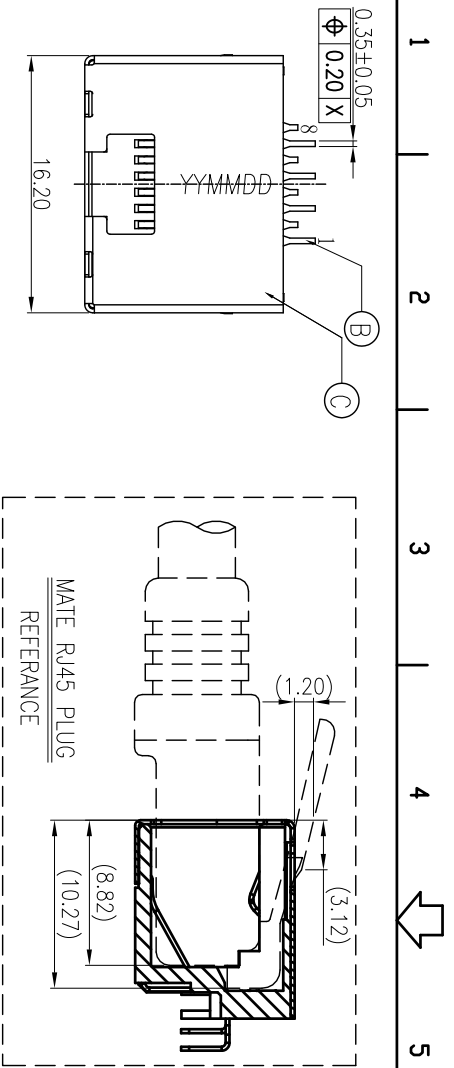


REV.	ECN NO.	OR DESCRIPTION	REVISED	DATE
A	PDR NO:1140401-7A	JAMES	2014.07.02	



SPECIFICATIONS:

- 1. ELECTRICAL CHARACTERISTICS:**
- 1-1. CURRENT RATING: 0.5A MAX.
 - 1-2. VOLTAGE RATING: 150V MAX.
 - 1-3. CONTACT RESISTANCE: 50mΩ MAX.(INITIAL), 100mΩ MAX.(AFTER LIFE TEST).
 - 1-4. INSULATION RESISTANCE: 100MΩ MIN.
- 2. MECHANICAL CHARACTERISTICS:**
- 2-1. DURABILITY: 5000 CYCLES.
 - 2-2. INSERTION FORCE: 2.25KG MAX. WITH LATCH DEPRESSED.
 - 2-3. WITHDRAWAL FORCE: 4.5kg MAX. WITH LATCH DEPRESSED.
 - 2-4. OPERATING TEMPERATURE: -50°C ~ +70°C
- 3. MARKING: MARK "S" INSIDE OF THE CONNECTOR.**
- 4. PACKAGING: TAPE & REEL.**
- 5. TO CONFORM TO SINGATRON HAZARDOUS SUBSTANCE FREE SPEC.**
- 6. HALOGEN FREE PRODUCT IDENTIFICATION**
- MARK ON PRODUCT: ○**
- 7. HALOGEN FREE PRODUCT IDENTIFICATION LOGO**
- 8. ON THE PACKAGING: ●**
- 8. FOR REFLOW SOLDERING: LEAD-FREE PROCESS.**
- 9. PRINTED DATE CODE "YY MM DD " ON TOP OF THE CONNECTOR.**

CODE	COLOR	Wavelength
10(+)	9(-)	600 ~ 612nm
12(+)	11(-)	564.5~576.5(nm)



NO	DESCRIPTION	QTY	MATERIAL	PLATING & COLOR
A	BODY	1	HIGH TEMP.THERMOPLASTIC	BLACK
B	BRFC CONTACT	8	PHOSPHOR BRONZE	SU" Au ON CONTACT AREA; Matte Sn 120u" ON SOLDER TAIL; ALL OVER Ni: 50u"MIN.
C	SHELL	1	STEEL	NI PLATING ALL OVER
D	LED	1	Wavelength 564.5~576.5(nm)	GREEN
E	LED	1	Wavelength 600 ~ 612nm	AMBER

UNLESS OTHERWISE SPECIFIED TOLERANCES	DECIMALS:	ANGLES:
X	±0.50	X ±2°
XX	±0.30	XX ±1°
XXX	±0.20	

TITLE	PART NO.	UNITS	SCALE	SHEET	REV.
RJ45 JACK	2RJ3029-118411F	mm	4:1	1 / 1	A

Singatron Enterprise Co., Ltd.
信音企業股份有限公司

CUSTOMER COPY