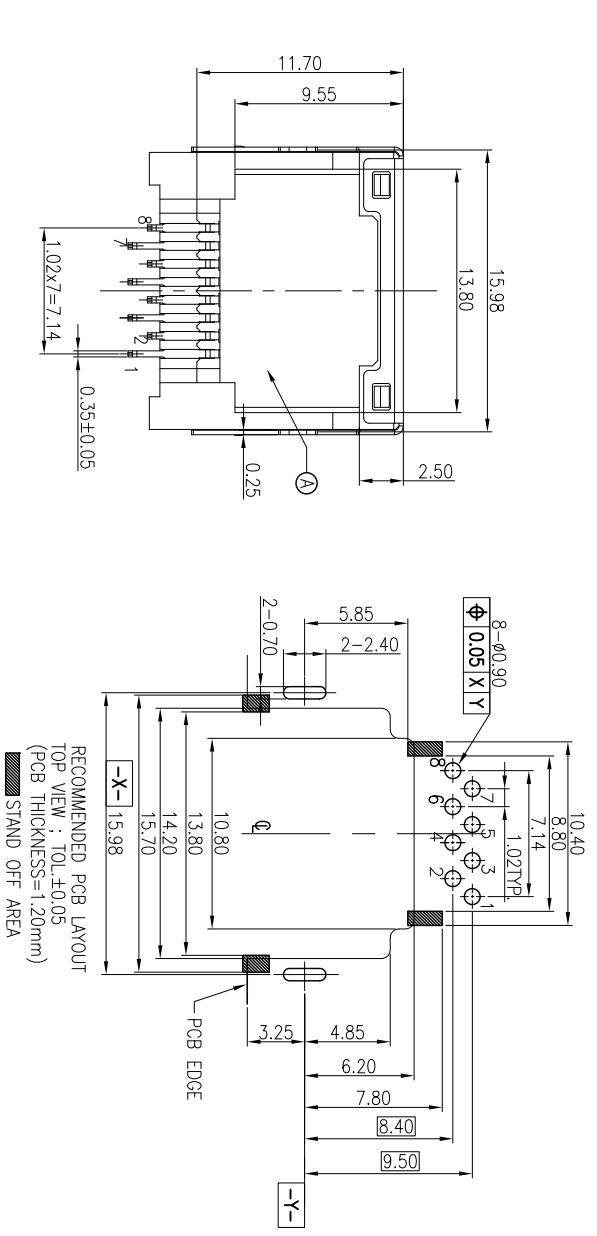
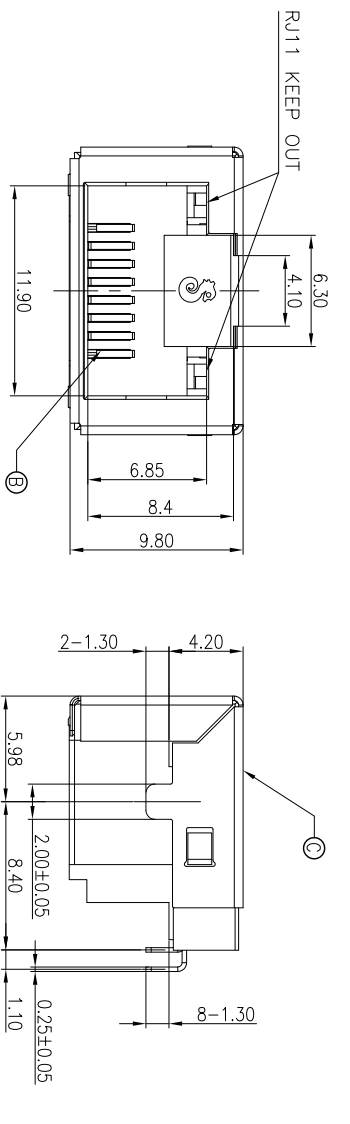
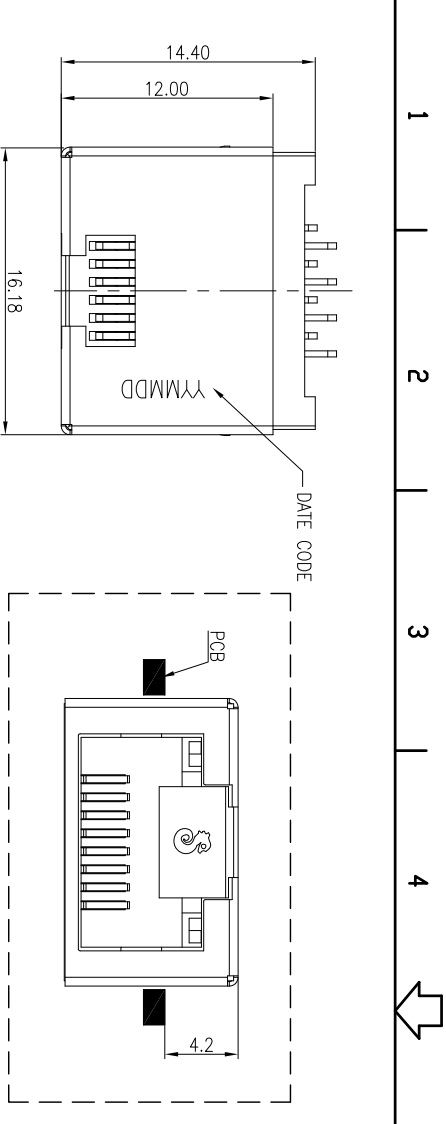
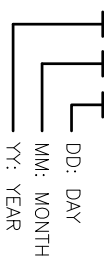


REV.	ECN NO	DR DESCRIPTION	REVISED	DATE
A	PDR NO:IT20921-4A		Sam	2012.12.27



SPECIFICATIONS:

- 1. ELECTRICAL CHARACTERISTICS:**
- 1-1. CURRENT RATING: 500mA MAX.
 - 1-2. VOLTAGE RATING: 150VAC MAX.
 - 1-3. CONTACT RESISTANCE : 50mΩ MAX.(INITIAL), 100mΩ MAX (AFTER LIFE TEST).
 - 1-4. INSULATION RESISTANCE : 100MΩ MIN.
- 2. MECHANICAL CHARACTERISTICS:**
- 2-1. DURABILITY: 5000 CYCLES.
 - 2-2. INSERTION FORCE: 2.25kg MAX. WITH LATCH DEPRESSED.
 - 2-3. WITHDRAWAL FORCE: 4.5kg MAX. WITH LATCH DEPRESSED.
 - 2-4. OPERATING TEMPERATURE: -30℃ ~ +70℃.
- 3. MARKING: MARK "S" INSIDE OF THE CONNECTOR.**
- 4. PACKAGING : TAPE & REEL.**
- 5. TO CONFORM TO SINGATRON HAZARDOUS SUBSTANCE FREE SPEC.**
- 6. HALOGEN FREE PRODUCT IDENTIFICATION**
- 7. HALOGEN FREE PRODUCT IDENTIFICATION LOGO ON THE PACKAGING:**
- 8. FOR REFLOW SOLDERING LEAD-FREE PROCESS.**
- 9. PRINTED DATE CODE" YY MM DD " ON TOP OF THE CONNECTOR.**



C	SHELL	1	Stainless Steel	NI PLATING ALL OVER
B	8P8C CONTACT	8	PHOSPHOR BRONZE 0.25t	C/F PLATING CONTACT AREA Sn 120μ ON SOLDER TAIL; ALL OVER Ni 50μ MIN.
A	BODY	1	HIGH TEMP.THERMOPLASTIC	BLACK
NO	DESCRIPTION	QTY	MATERIAL	PLATING & COLOR

UNLESS OTHERWISE SPECIFIED TOLERANCES

DECIMALS: ANGLES:

X ±0.5 X ±2°
 X.X ±0.3 X.X ±1°
 X.XX ±0.2

TITLE		RJ45 JACK	
DWM	Sam	PART NO.	2RJ3057-008211F
CHKD	James	SCALE	4:1 UNIT: mm
APVD	QUAN	SIZE: A3	SHEET: 1 / 1 REV: A

Singatron Enterprise Co., Ltd.
 信亨企業股份有限公司
 CUSTOMER COPY