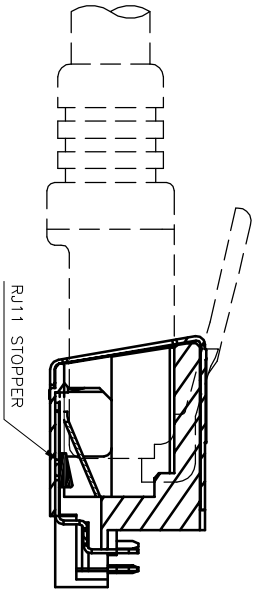
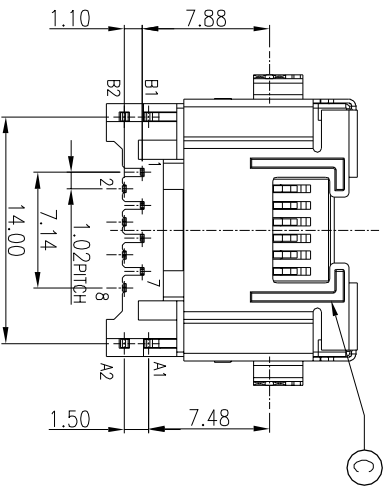
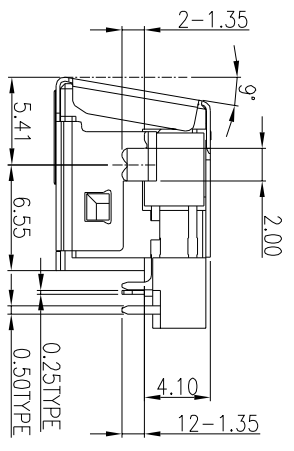
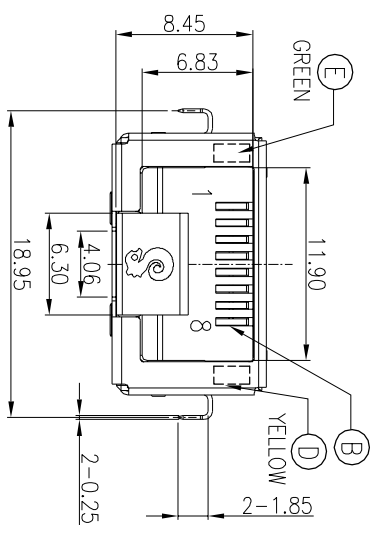


RECOMMENDED PCB LAYOUT  
TOP VIEW ; TOL.±0.05  
(PCB THICKNESS=1.20mm)



SPECIFICATIONS:

- ELECTRICAL CHARACTERISTICS:
  - CURRENT RATING: 0.5A MAX.
  - VOLTAGE RATING: 150V MAX.
  - CONTACT RESISTANCE : 50mΩ MAX.(INITIAL), 100mΩ MAX.(AFTER LIFE TEST);
  - INSULATION RESISTANCE: 100MΩ MIN.
- MECHANICAL CHARACTERISTICS:
  - DURABILITY: 5000 CYCLES.
  - INSERTION FORCE: 2.25kg MAX. WITH LATCH DEPRESSED.
  - WITHDRAWAL FORCE: 4.5kg MAX. WITH LATCH DEPRESSED.
  - OPERATING TEMPERATURE: -30℃ ~ +70℃.
- MARKING: MARK "Ⓢ" INSIDE OF THE CONNECTOR.
- PACKAGING : TAPE & REEL.
- TO CONFORM TO SINGATRON HAZARDOUS SUBSTANCE FREE SPEC.
- HALOGEN FREE PRODUCT IDENTIFICATION
- MARK ON PRODUCT: ○
- HALOGEN FREE PRODUCT IDENTIFICATION LOGO ON THE PACKAGING: Ⓢ
- FOR REFLOW SOLDERING LEAD-FREE PROCESS.
- PRINTED DATE CODE" YY MM DD " ON TOP OF THE CONNECTOR.



NODE	COLOR		
AZ(+)	A1(-)	YELLOW	A2→+A1
B2(+)	B1(-)	GREEN	B2→+B1

E	LED	1	GREEN
D	LED	1	YELLOW
C	SHELL	1	STAINLESS STEEL T:0.25mm
B	8P8C CONTACT	8	PHOSPHOR BRONZE T:0.25mm
A	BODY	1	PA-10T 30%GF

Singatron Enterprise Co., Ltd.  
信置企業股份有限公司

NO	DESCRIPTION	QTY	MATERIAL	PLATING & COLOR
UNLESS OTHERWISE SPECIFIED TOLERANCES				
DECIMALS: ANGLES:				
X	±0.5	X	±2°	
X	±0.3	X	±1°	
X	±0.2			
TITLE: RJ45 JACK				
DWN	James	PART NO.	2RJ3101-138211F	
CHKD		SCALE	4:1	UNIT: mm
APVD	Boye	SIZE: A3	SHEET: 1 / 1	REV: A

