



THIS IS A RoHS
COMPLIANT
COMPONENT/
PRODUCT.

NOTES:

1.ELECTRICAL CHARACTERISTICS:

1-1.CURRENT RATING:1.5A MAX.

1-2.VOLTAGE RATING:150V MAX.

1-3.INSULATION RESISTANCE:1000M Ω MIN. Δ

1-4.DIELECTRIC WITHSTANDING VOLTAGE:
1000V CONTACT TO CONTACT.

2.MECHANICAL CHARACTERISTICS

2-1.MATING FORCES:

5 POUNDS MAX. WITH LATCH DEPRESSED.

2-2.UNMATING FORCES:

10 POUNDS MAX. WITH LATCH DEPRESSED

AT AN ADVANTAGEOUS ANGLE.

2-3.OPERATING TEMPERATURE:-30° TO +70°

3.MATERIAL:

3-1.HOUSING: HF. HIGH TEMP. UL 94V-0. STAND COLOR-BLACK.

3-2.SHELL: BRASS

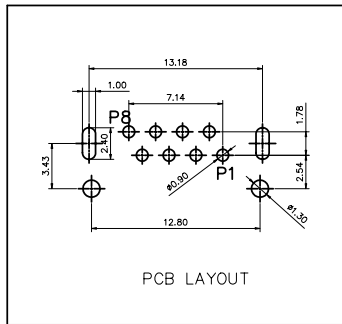
SHELL PLATING NICKEL.

3-3.CONTACT: PHOSPHO-COPPER,

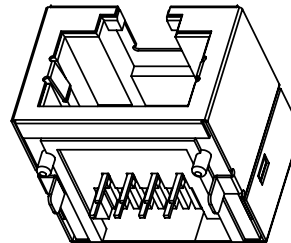
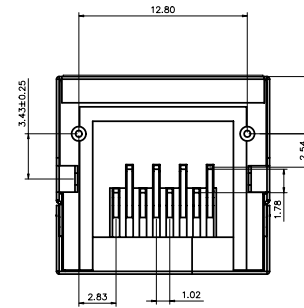
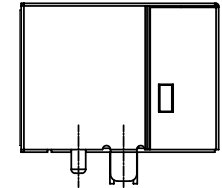
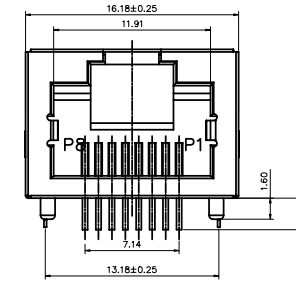
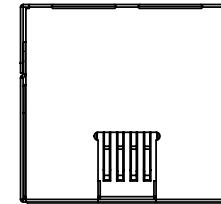
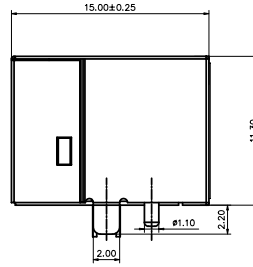
CONTACT PLATING GOLD BASIC PLATING Ni

PART NO:K3J1X-015-01H

PLATING: 1-3u" 2-6u" 3-15u"
4-30u" 5-50u" 7-Gold flash



PCB LAYOUT



△ X1	UPDATE DRAWING	Kelvin	031411
△ X0	NEW DESIGN	Kelvin	101810
MARK	ECN-NO.	REVISION RECORD	DRAWN DATE

Singatron Enterprise Co., Ltd.

UNLESS OTHERWISE SPECIFIED TOLERANCE		TITLE		RJ45 JACK 8P8C STP	
X.X	±0.20	DWN	Kelvin	PART NO.	2RJK3J17-015-01H
X.XX	±0.15	CHKD	101810	SCALE 1:1	UNIT: mm
X.XXX	±0.10	APVD		SIZE: A3	SHEET:1 OF 1
ANGLE	±5°	CUSTOMER COPY			