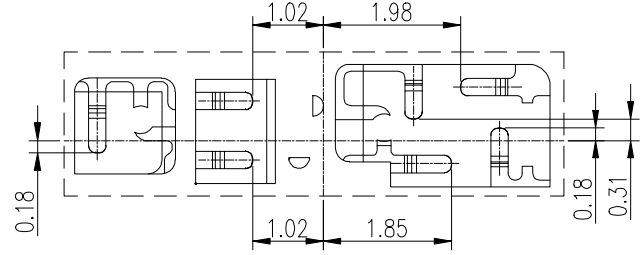
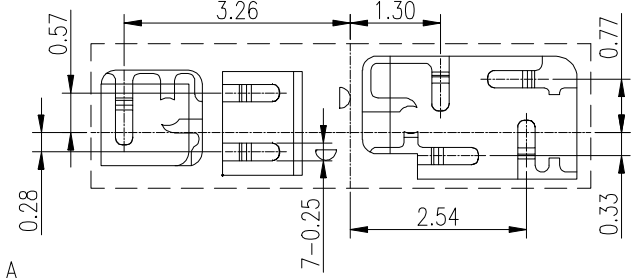
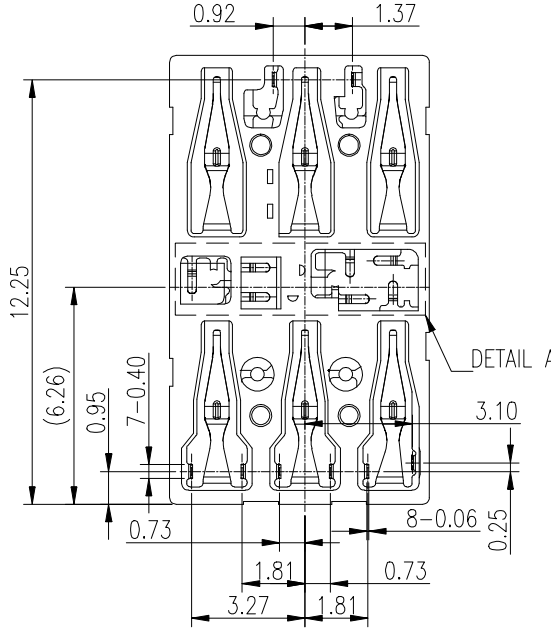
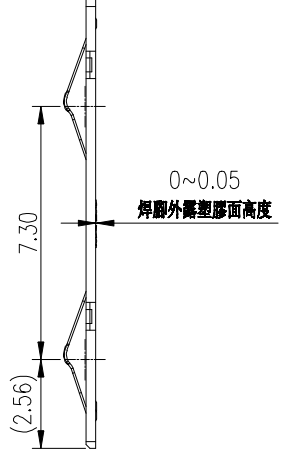
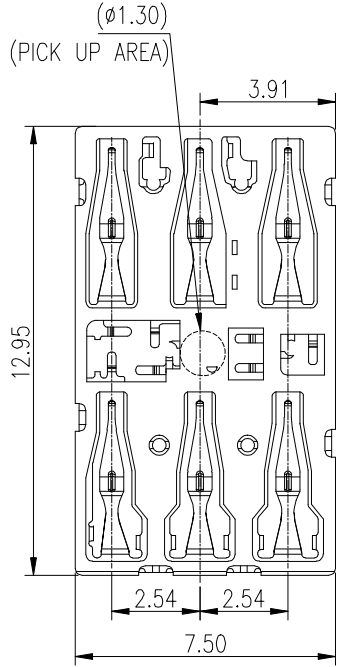
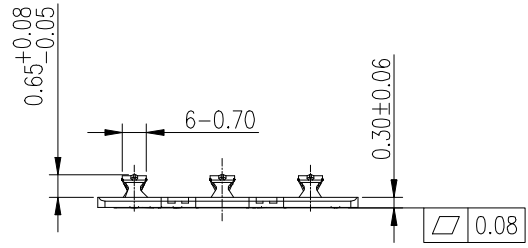


REV	LOCAS	DESCRIPTION	DRAW	DATE
A0	NEW	PERLIMINARY	LIU	2020.04.16



DETAIL A
SCALE 2:1



Ordering Information

2S A 06 01 254 030-154

2S:Smart CARD
A:Finished Product
No.of PINS:06(6PIN)
Plating Number

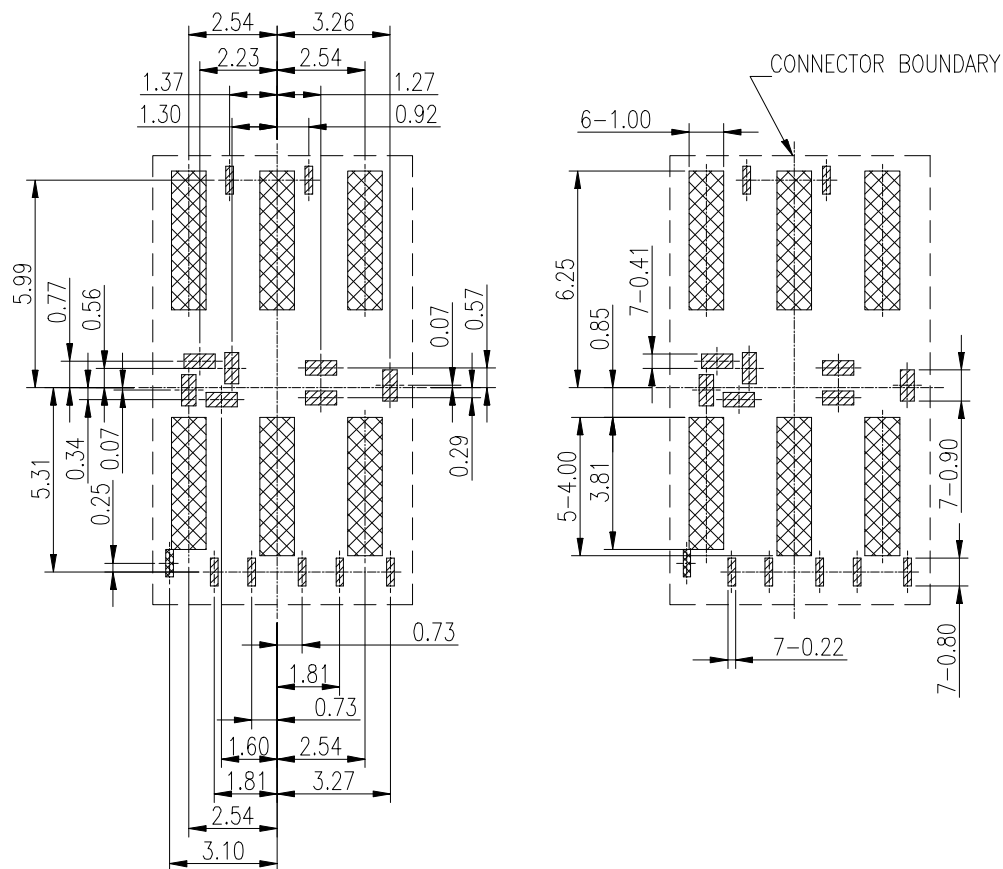
Running Number
030:Height 0.30mm
254:Pitch 2.54mm

UNLESS OTHERWISE SPECIFIED,TOLERANCE:

X.	±0.25
X.x	±0.20
X.xx	±0.10
ANGULAR	±3°

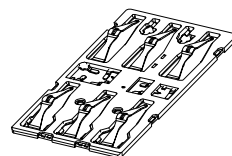
Singatron Enterprise Co., Ltd.				
TITLE	PH2.54mm HO. 30mm SIM卡			
DWN	LIU	PART NO.	2SA0601254030-154	
CHKD	2020.04.16	SCALE 1:1	UNIT: mm	REV: A0
APVD		SIZE: A3	SHEET: 1/2	
CUSTOMER COPY				

REV	LOCAS	DESCRIPTION	DRAW	DATE
A0	NEW	PERLIMINARY	LIU	2020.04.16



RECOMMENDED PCB LAYOUT (TOP VIEW)
GENERAL TOLERANCES: ±0.05

"SOLDER AREA
 "NO WIRE AREA
 "CONNECTOR BOUNDARY



3D VIEW REF.
SCALE 1:2

NOTE:

- MATERIAL:
HOUSING: LCP_S475 BLACK WITH 30% GF UL94V-0
CONTACT: C5240R-SH T=0.06±0.01mm.
- FINISHED:
50 μ" MIN. NICKEL UNDERPLATING OVERALL.
15 μ" MIN. GOLD PLATING ON CONTACT AREA,
GOLD PLATING 1.2 μ" MIN. ON SOLDER AREA.
- ELECTRICAL:
RATED VOLTAGE(MAX.): 15 V DC(RMS)
RATED CURRENT (MAX.): 0.50 A
CONTACT RESISTANCE: INITIALLY 50 mΩ MAX.,
FINALLY 100 mΩ MAX. AFTER TEST.
INSULATION RESISTANCE: 1000 MΩ MIN. AT 500 V DC FOR 1 MINUTE.
DIELECTRIC WITHSTANDING: AT 500 V AC FOR 1 MINUTE MIN.
OPERATING TEMPERATURE RANGE: -30°C~+85°C.
- MECHANICAL:
CONTACT NORMAL:
0.20 N MIN AT 0.35 mm AWAY FROM HOUSING TOP SURFACE
0.50 N MIN AT 0.10 mm AWAY FROM HOUSING TOP SURFACE
DURABILITY: 5000 CYCLES.

Singatron Enterprise Co., Ltd.

UNLESS OTHERWISE SPECIFIED, TOLERANCE:
X. ±0.25
X.x ±0.20
X.xx ±0.10
ANGULAR ±3°

TITLE	PH2.54mm HO. 30mm SIM卡			
DWN	LIU	PART NO.	2SA0601254030-154	
CHKD	2020.04.16	SCALE 1:1	UNIT: mm	
APVD		SIZE: A3	SHEET: 2/2	REV: A0
CUSTOMER COPY				