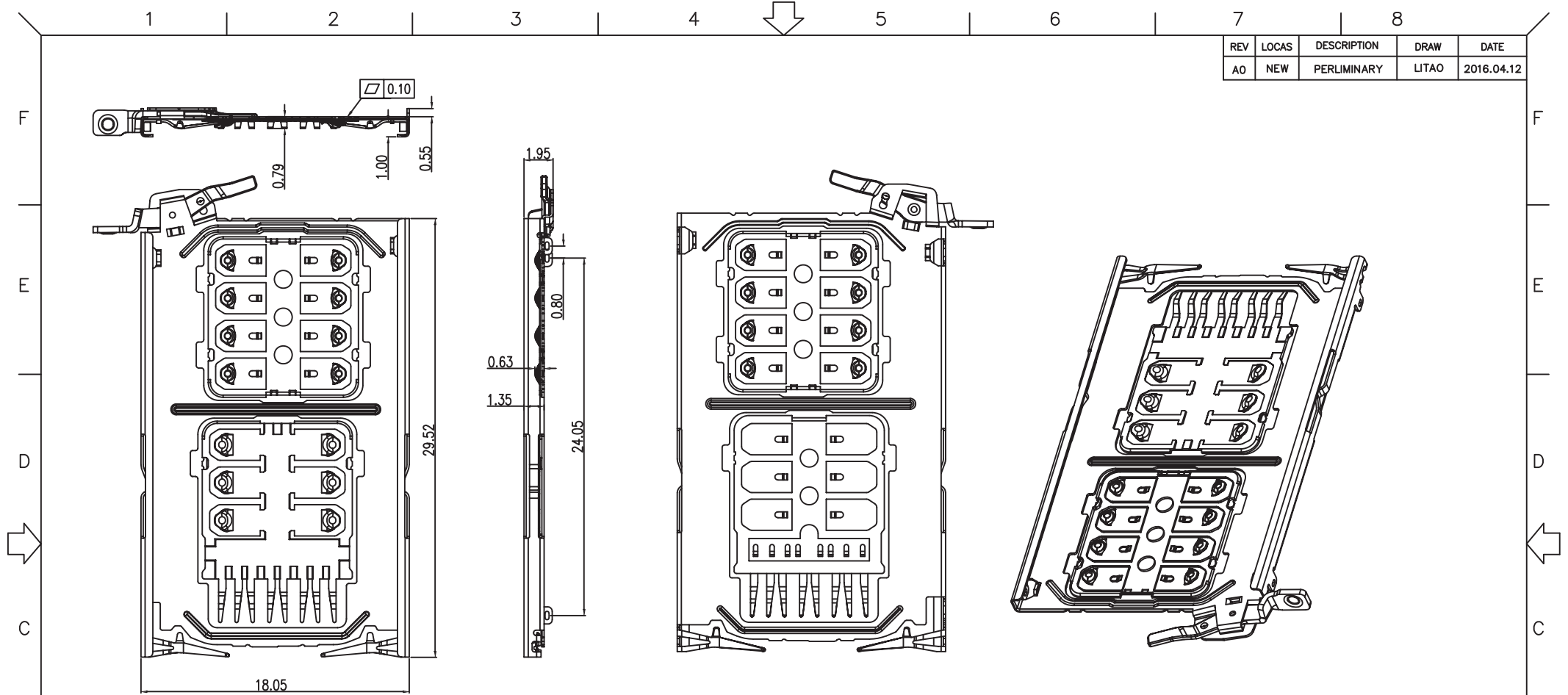


REV	LOCAS	DESCRIPTION	DRAW	DATE
AO	NEW	PERLIMINARY	LITAO	2016.04.12



2S A 22 01 220 135-102  
 2S:SIM CARD Series  
 A:Finished Product  
 No.of PINS:20(20PIN)  
 Standard Plating  
 Running Number  
 135:Height 1.35mm  
 220:Pitch 2.20mm

UNLESS OTHERWISE SPECIFIED TOLERANCES		Singatron Enterprise Co., Ltd.		
DECIMALS:	ANGLES:	TITLE	1.35H 3 CHOOSE 2 CARD	
X :±0.5	X :±2°	DWN	LITAO 2016 04 12	PART NO. 2SA2201220135-102
X.X :±0.3	X.X :±1°	CHKD	SCALE 1:1	UNIT: mm
X.XX :±0.2		APVD	SIZE: A3	SHEET:1 OF 3
		REV: AO		
<b>CUSTOMER COPY</b>				

1

2

3

4

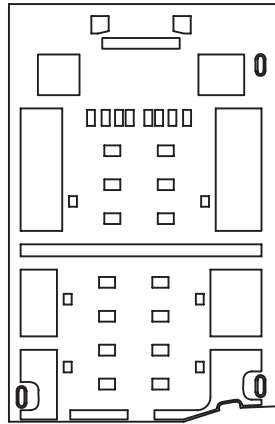
5

6

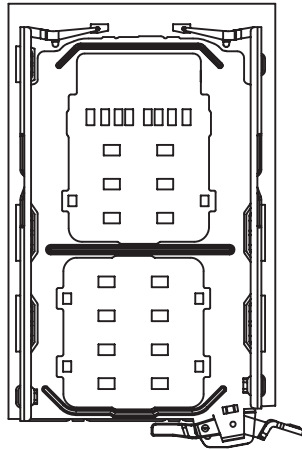
7

8

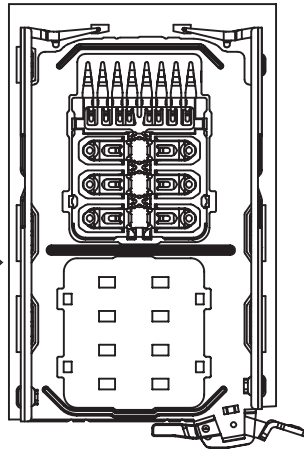
REV	LOCAS	DESCRIPTION	DRAW	DATE
AO	NEW	PERLIMINARY	LITAO	2016.04.12



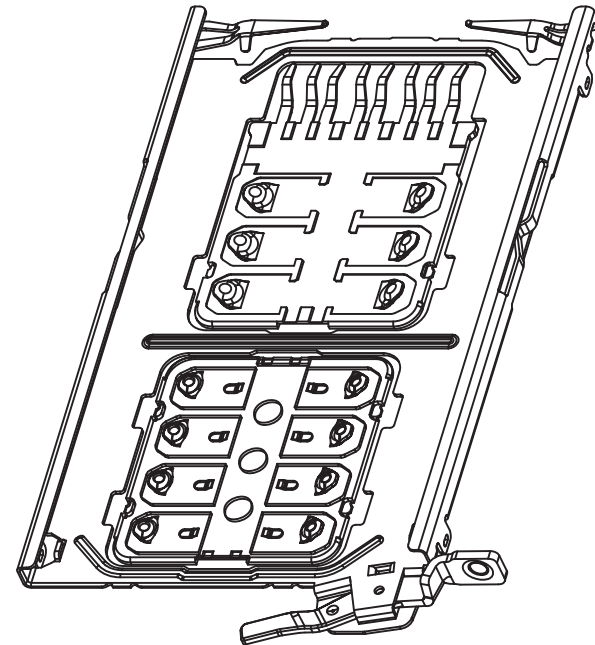
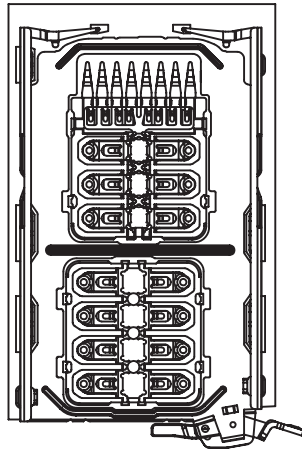
1



2



3



SMT

UNLESS OTHERWISE SPECIFIED TOLERANCES

DECIMALS: ANGLES:  
 X :±0.5 X :±2°  
 X.X :±0.3 X.X :±1°  
 X.XX :±0.2

Singatron Enterprise Co., Ltd.

TITLE	1.35H 3 CHOOSE 2 CARD		
DWN	LITAO 2016.04.12	PART NO.	2SA2201220135-102
CHKD	SCALE 1:1	UNIT: mm	
APVD	SIZE: A3	SHEET: 2 OF 3	REV: AO

CUSTOMER COPY

1

2

3

4

5

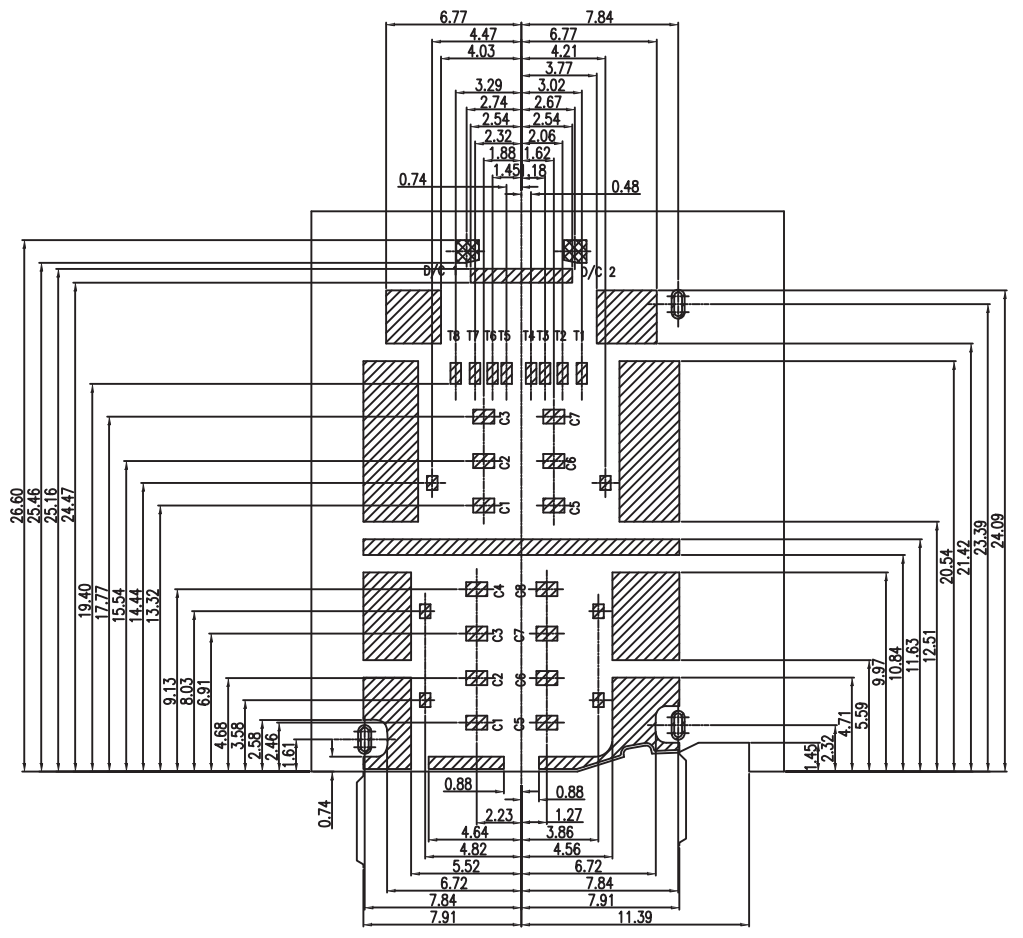
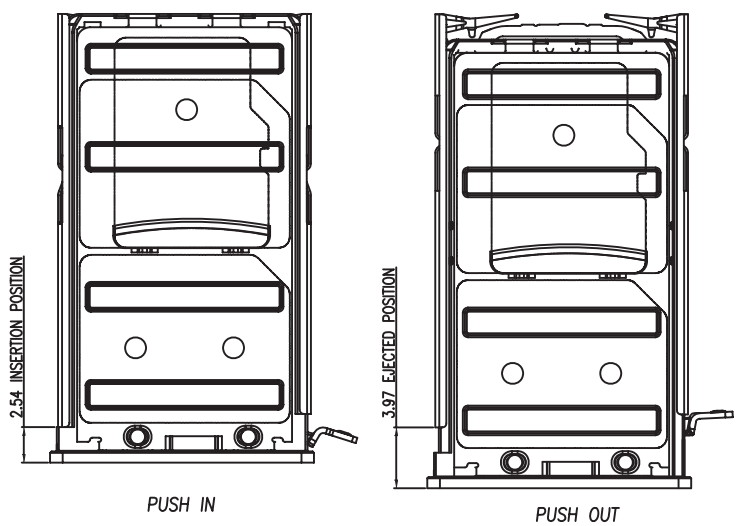
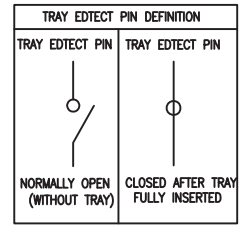
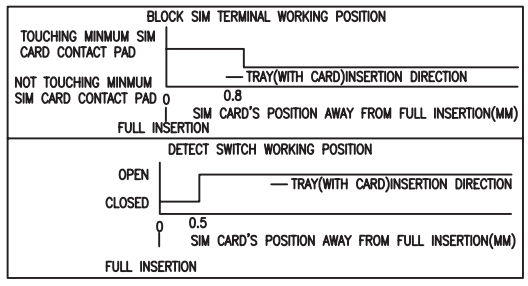
6

7

8

REV	LOCAS	DESCRIPTION	DRAW	DATE
AO	NEW	PERLIMINARY	LITAO	2016.04.12

PIN No.	DESCRIPTION
C1	VCC (SUPPLY VOLTAGE)
C2	RST (RESET SIGNAL)
C3	CLK (CLOCK SIGNAL)
C4	RESERVED
C5	GND
C6	VPP (VARIABLE SUPPLY VLOTAGE)
C7	I/O (DATA INPUT/OUTPUT)
C8	RESERVED
C/D1	DETECT
C/D2	DETECT
T1	DAT2
T2	CD/DAT3
T3	CMD
T4	VDD
T5	CLK
T6	VSS
T7	DAT0
T8	DAT1



RECOMMENDED PCB LAYOUT(TOLERANCE  $\pm 0.05$ )  
 RECOMMENDED METAL MASK  $T=0.12mm$  SCALE: 1:1

FOR SOLDERING AREA

FOR CONTACT AREA(GOLD PLATED)

UNLESS OTHERWISE SPECIFIED TOLERANCES		Singatron Enterprise Co., Ltd.	
DECIMALS:	ANGLES:	TITLE	1.35H 3 CHOOSE 2 CARD
X $\pm 0.5$	X $\pm 2^\circ$	DWN	LITAO 2016 04 12 PART NO. 2SA2201220135-102
X.X $\pm 0.3$	X.X $\pm 1^\circ$	CHKD	SCALE 1:1 UNIT: mm
X.XX $\pm 0.2$		APVD	SIZE: A3 SHEET: 3 OF 3 REV: AO
<b>CUSTOMER COPY</b>			