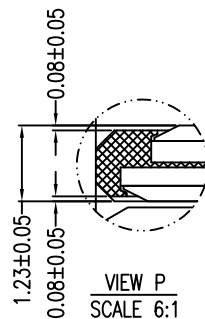
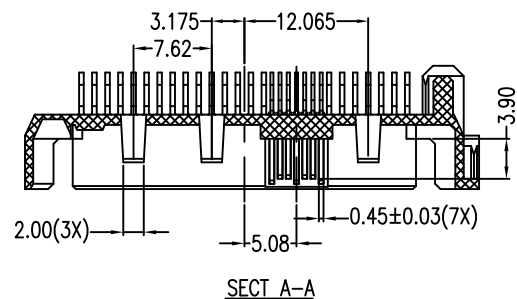


REV.	ECN.NO.	DATE
A	RELEASED	11/16/05
C	Add Tolerance Modify Notes Add Pin Definition	09/08/10



Signal Segment		Power Segment	
Pin No.	Type	Pin No.	Type
S1	GND	P1	V33
S2	A+	P2	V33
S3	A-	P3	V33
S4	GND	P4	GND
S5	B-	P5	GND
S6	B+	P6	GND
S7	GND	P7	V5
S8	GND	P8	V5
S9	A+	P9	V5
S10	A-	P10	GND
S11	GND	P11	DAS/DSS
S12	B-	P12	GND
S13	B+	P13	V12
S14	GND	P14	V12
		P15	V12

NOTES:

***Material**

Housing: LCP+50%G.F, UL 94V-0 rated, Color: Black;
 Contact: Brass;
 Plating: Gold plating on contact area, Tin(100u" min.) plating on solder tail, Nickel (40u" min.) underplating overall

***Mechanical**

Insertion Force: 25N max.
 Withdrawal Force: 5N min.
 Durability: 500 cycles

***Electrical Specification**

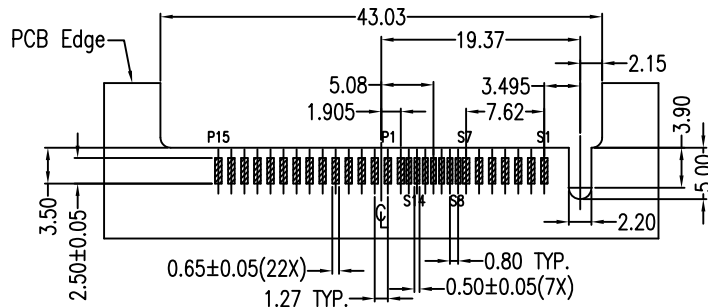
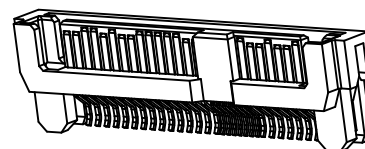
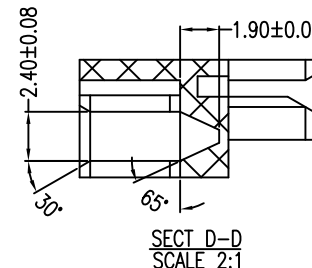
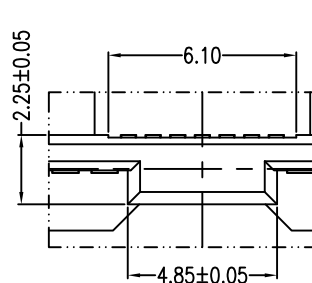
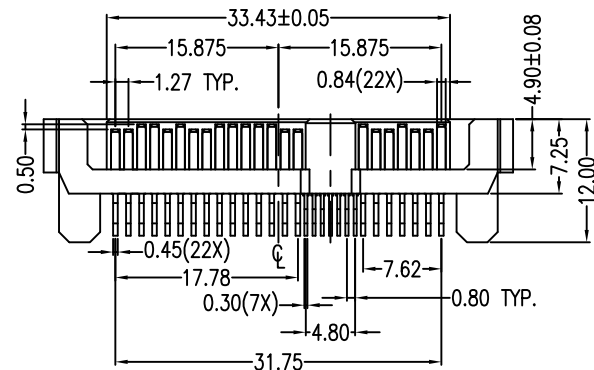
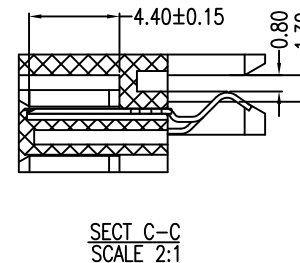
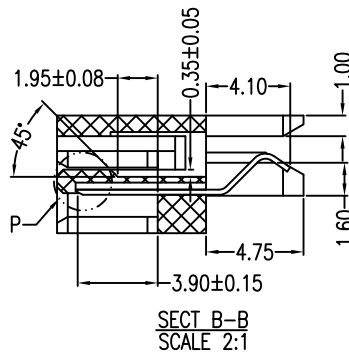
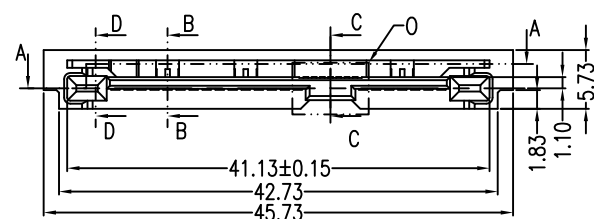
Current Rating: 1.5 Ampere per contact;
 Contact Resistance: 30 mΩ max.
 Insulation Resistance: 1000 MΩ min.
 Dielectric Withstanding Voltage: 500 VAC.

***Environmental**

Operating Temperature: 0°C to +55°C

***How to order**

2SAS-M29-R3M-10
 M: Straddle Type(1.0)
 Gold F: Flash 5:15u" 3:30u"
 Number of Contacts
 Series No.



PCB LAYOUT(T=1.00mm)
COMPONENT SIDE

Units	mm Scale	5:4	Drawing By	Data	SINGATRON U.S.A.			
Tolerance Unless Otherwise Specified			Lulu	09/09/10	Date 09/08/10			
.X ~ ±0.38			Reviewed By	Data				
.XX ~ ±0.25			Sharon	09/09/10	Sheet	1 of 1	Title	SAS 29P Straddle Type Male (PCB Thickness 1.0mm)
.XXX ~ ±0.20			Approval By	Data	Third Angle Projection			Drawing No. 2SAS-M29-R3M-10
Angle ~ ± 3°			Jason	09/09/10	REV	C		