

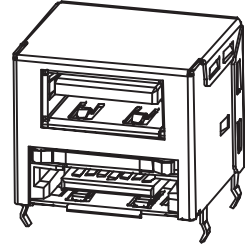
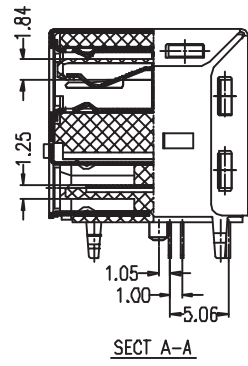
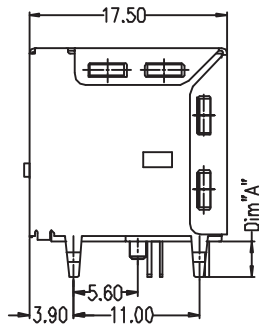
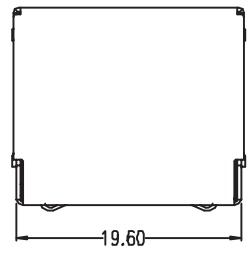
CUSTOMER DRAW



REV.	DESCRIPTION	DATA	DRAW	APPD
A0	NEW	2014.04.08	Rayden	

Signal Name	
Pin Number	USB
U1	VBUS
U2	D-
U3	D+
U4	GDN

Signal Name	
Pin Number	eSATA
S1	GND
S2	A+
S3	A-
S4	GND
S5	B-
S6	B+
S7	GND



**NOTES:**

**\*e SATA Material**

Housing : Nylon46+30%G.F,UL 94V-0 Rated  
 Contact : Brass,Au plating on contact area,Sn(100u" Min) Plating on Solder Tail,Ni(40u" Min) underplating over all.  
 Shell : SUS 304

**\*e SATA Electrical Specification**

Operation Voltage: 100V AC Max.  
 Current Rating: 1.5 Ampere per contact  
 Contact Resistance: 30mΩ Max  
 Insulation Resistance: 1000MΩ Min  
 Dielectric Withstanding Voltage: 500V AC.

**\*USB Material**

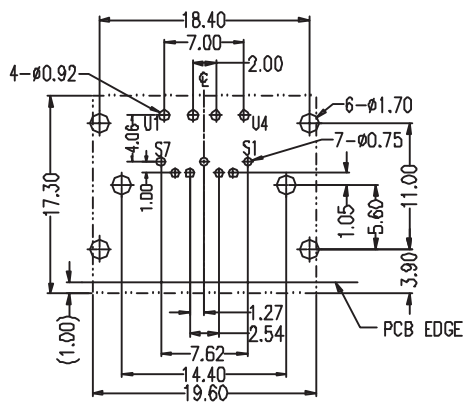
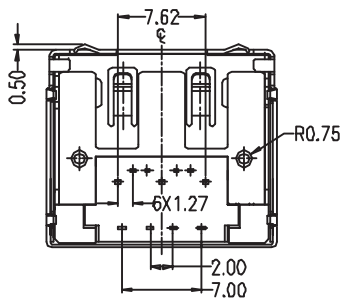
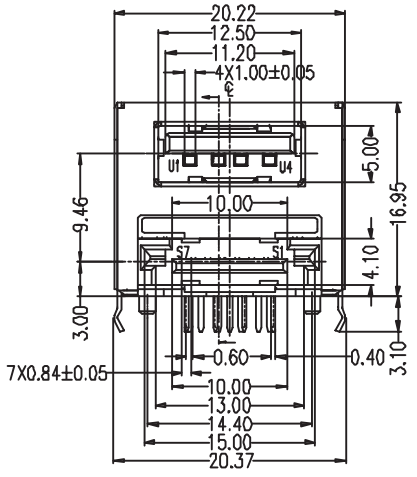
Housing : Nylon66+30%G.F,UL 94V-0 Rated Color:Black  
 Retainer : Nylon66+30%G.F,UL 94V-0 Rated Color:Black  
 Contact : Phosphor bronze,Au plating on contact area, Sn(100u" Min) Plating on Solder Tail,Ni(40u" Min) underplating over all.  
 Shell(Outside): BRASS; Sn(100u" Min) Plating on Solder Tail  
 Shell(Inside): SUS 304.

**\*USB Electrical Specification**

Rated Voltage and Current : 1.5A at 250V AC Min;  
 Contact Resistance: 30mΩ Max.  
 Insulation Resistance: 1000MΩ Min at 500V DC.  
 Dielectric Withstanding Voltage: 500V AC For 1 minute.

**\*Environmental**

Operating Temperature : -55°c to +85°c.



PCB Layout(T=1.60mm)  
COMPONENT SIDE

SINGATRON (U.S.A.)						
DESCRIPTION		USB+ESATA DIP Type				
DRAWING NO		140408-001	PART NO.		2SAT-00BK-085	
THIRD ANGLE PROJECTION	REVISION	A	UNIT	MM	DRAWN	Rayden
	LINEAR ANGLE		SCALE	N/A	CHECKED	
	X. ±0.38	X. ±3°	SHEET	1/1	APPROVED	
	X.X ±0.25	X.X ±1°				
	X.XX ±0.15	X.XX ±0.5°				