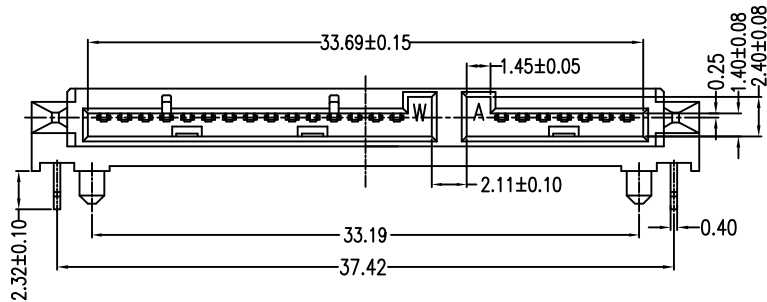


REV.	ECN.NO.	DATE
A	RELEASED	07/08/05
D	Modify Harpoon	03/05/09
E	Add CAV No.	02/14/12



Signal Segment		Power Segment			
Name	Type	Name	Type	Name	Type
S1	GND	P1	V33	P9	V5
S2	A+	P2	V33	P10	GND
S3	A-	P3	V33	P11	DAS/DSS
S4	GND	P4	GND	P12	GND
S5	B-	P5	GND	P13	V12
S6	B+	P6	GND	P14	V12
S7	GND	P7	V5	P15	V12
		P8	V5		

NOTES:

*Material

Housing: LCP+50%GF, UL 94V-0 rated;Color: Black.
 Contact: Phosphor Bronze
 Plating: Au Plating on contact area
 Sn(100u"Min) plating on solder Tail.
 Ni(40u"Min) contact underplating overall.

Harpoon: Brass
 Plating: Sn(100u"Min)Plating Over Ni(40u"Min)

*Mechanical

Insertion Force: 45N Max.
 Withdrawal Force: 10N Min.
 Durability: 500 Cycles

*Electrical Specification

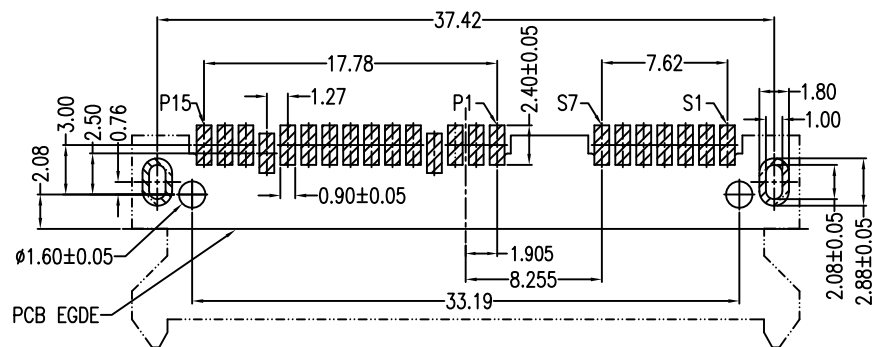
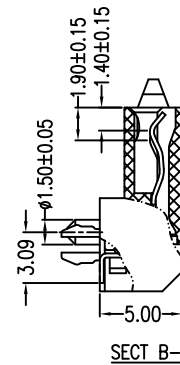
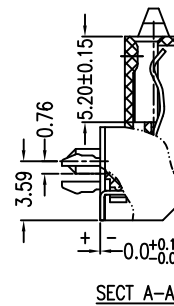
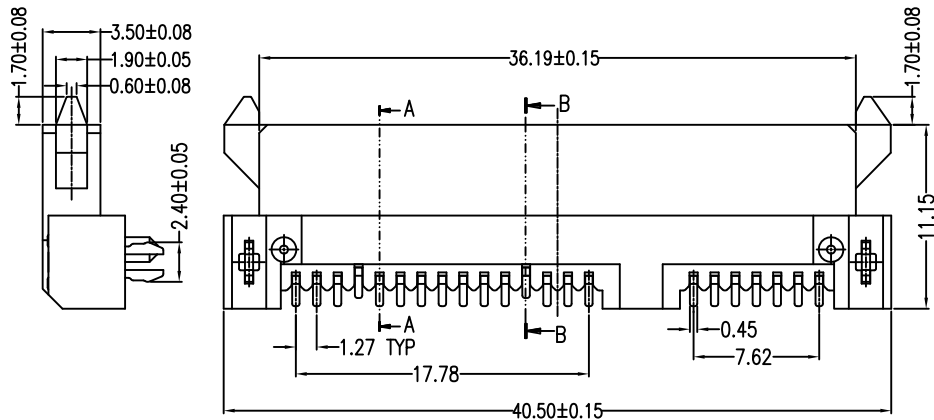
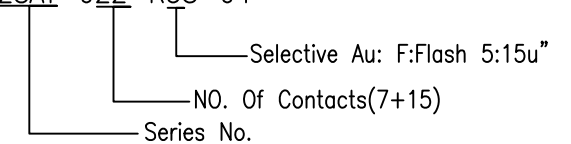
Current Rating: 1.5 Ampere Per Contact
 Contact Resistance: 30 mΩ Max.
 Insulation Resistance: 1000 MΩ Min.
 Dielectric Withstanding Voltage: 500V AC

*Environmental

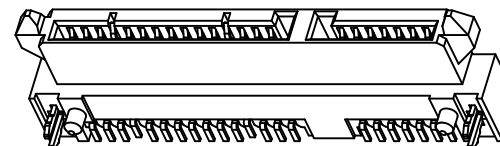
Operating Temperature: -55°C To +85°C

*How To order:

2SAT-022-R5S-04



P.C.B LAYOUT (T=1.0/1.2/1.6mm)
 COMPONENT SIDE



Units	mm	Scale	1:1	Drawing By	Data	SINGATRON U.S.A.					
				Blue	02/14-'12	Date		02/14/12	Title	Serial ATA 7+15P SMT	
				Reviewed By	Data	Sheet	1 of 1	Third Angle Projection		Female (H=5.0)	
				Sharon	02/14-'12					Drawing No.	2SAT-022-R5S-04
				Approval By	Data						
				Jason	02/14-'12						
Tolerance Unless Otherwise Specified											
.X	~		±0.38								
.XX	~		±0.25								
.XXX	~		±0.20								
Angle	~		± 3°								