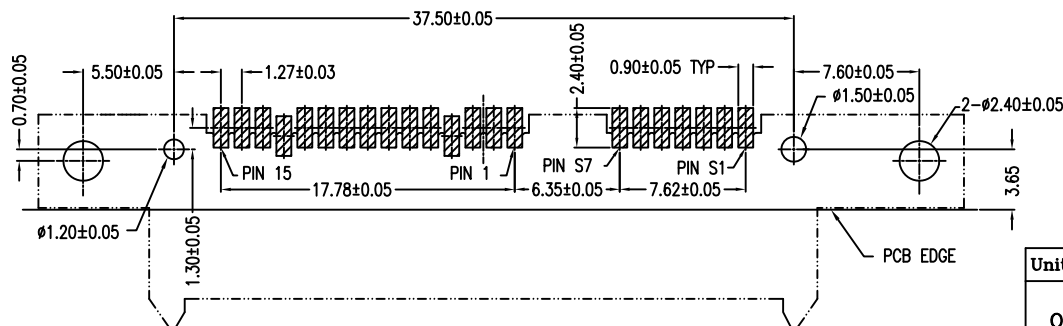
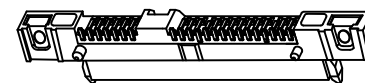
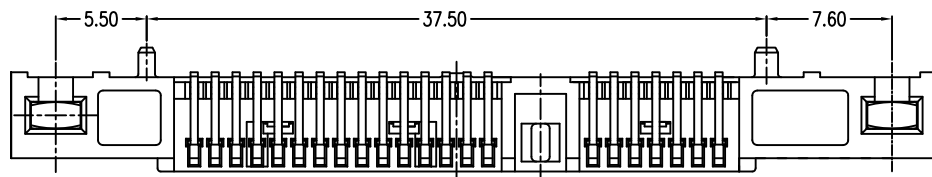
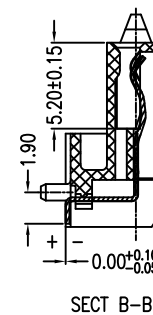
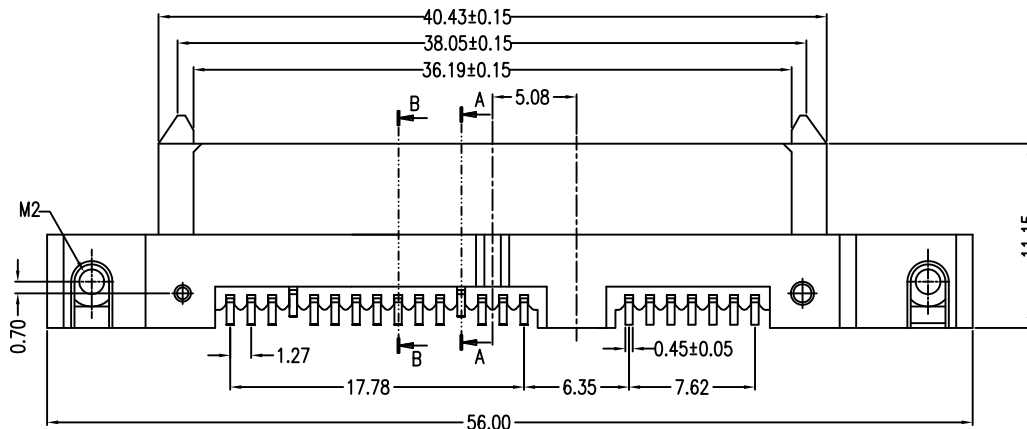
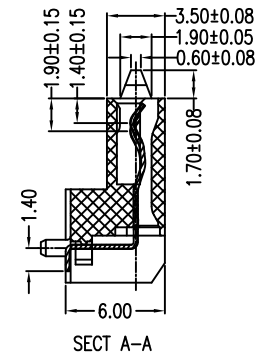
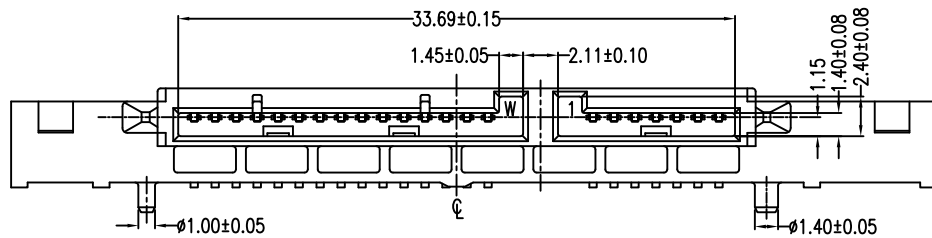


REV.	ECN.NO.	DATE
A	RELEASED	04/23-'08



P.C.B LAYOUT (T=1.20)
TOP VIEW

Notes:

*Material

Housing: LCP, UL 94V-0 rated;

Color: Black.

Contact: Phosphor Bronze

Plating: Gold Plating over Nickel on contact area

Tin plating on solder Tail.

Screw: Fe Plating over Zn

*Mechanical

Insertion Force: 45N max.

Withdrawal Force: 10N min.

Durability: 500 cycles

*Electrical Specification

Current Rating: 1.5 Ampere per contact

Contact Resistance: 30 Milliohms max.

Insulation Resistance: 1000 Megohms min.

Dielectric Withstanding Voltage: 500 VAC

*Environmental

Operating Temperature: -55°C to +85°C

*How to Order:

2SAT-022-R5S-07

Selective Gold:F:Flash,5:15u"
3:30u"

NO. of Contacts

Series No.

Units	mm	Scale	2:1	Drawing By	Data	SINGATRON U.S.A.							
Tolerance Unless Otherwise Specified				Amy	04/23-'08	Date		04/23-'08	Title		S ATA 7+15P 90°Female		
.X	~	±0.38		Reviewed By	Data	Sheet	1 of 1	Third Angle Projection		Lengthen SMT Screw Type			
.XX	~	±0.25		Sharon	04/23-'08								
.XXX	~	±0.20		Approval By	Data								
Angle	~	± 3°		Jason	04/25-'08					Drawing No.	2SAT-022-RxS-07	REV	A