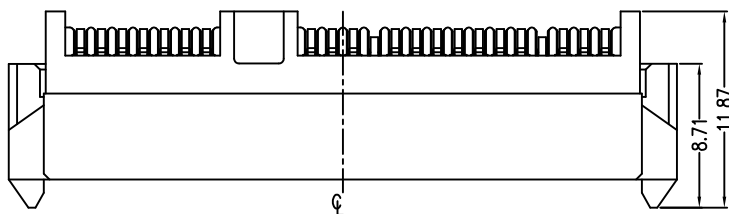


| REV. | ECN.NO. | DATE |
|------|--|-----------|
| A | RELEASED | 08/14-'08 |
| C | Add the dimensions | 10/01-'12 |
| D | Change Insertion Force: 45N Min.-20N Min. | 05/28-'13 |



| Signal Segment | |
|----------------|------|
| Name | Type |
| S1 | GND |
| S2 | A+ |
| S3 | A- |
| S4 | GND |
| S5 | B- |
| S6 | B+ |
| S7 | GND |

| Power Segment | | | |
|---------------|------|------|---------|
| Name | Type | Name | Type |
| P1 | V3.3 | P9 | V5 |
| P2 | V3.3 | P10 | GND |
| P3 | V3.3 | P11 | DAS/DSS |
| P4 | GND | P12 | GND |
| P5 | GND | P13 | V12 |
| P6 | GND | P14 | V12 |
| P7 | V5 | P15 | V12 |
| P8 | V5 | | |

Notes:

*Material

Housing: LCP+50%G.F, UL 94V-0 rated; Color: Black.
 Contact: Phosphor Bronze
 Plating: Au Plating on contact area
 Sn100u"Min) plating on solder Tail.
 Ni(40u"Min) contact underplating overall.

*Mechanical

Insertion Force: 20N max.
 Withdrawal Force: 4N min.
 Durability: 500 cycles

*Electrical Specification

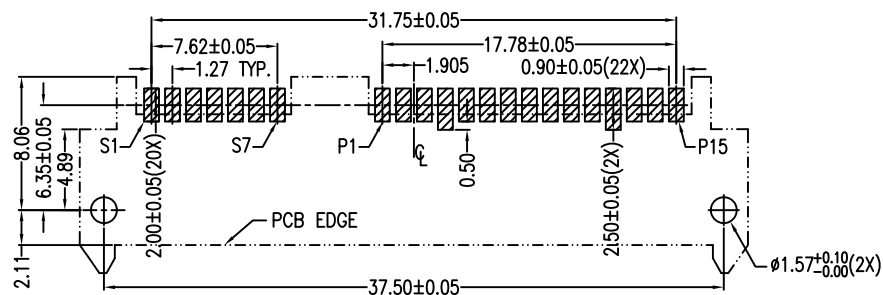
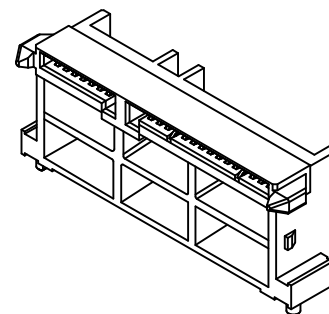
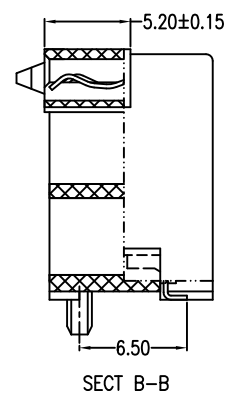
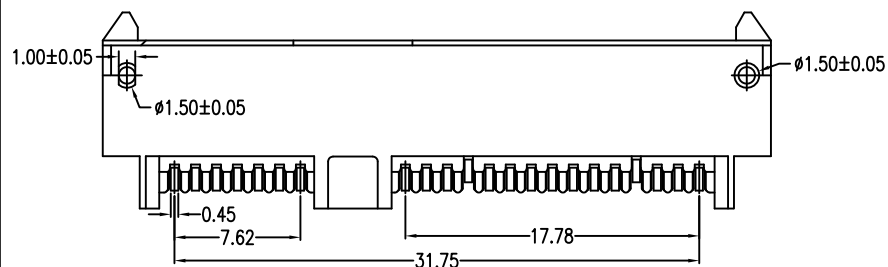
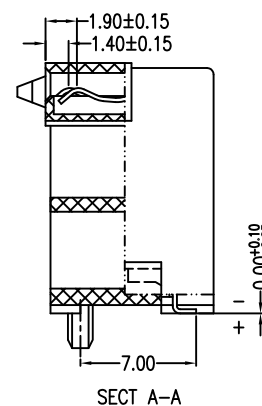
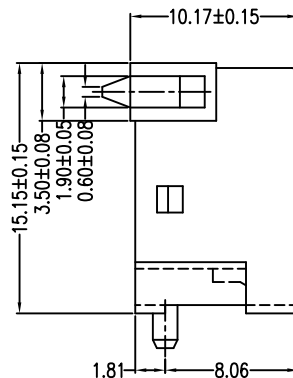
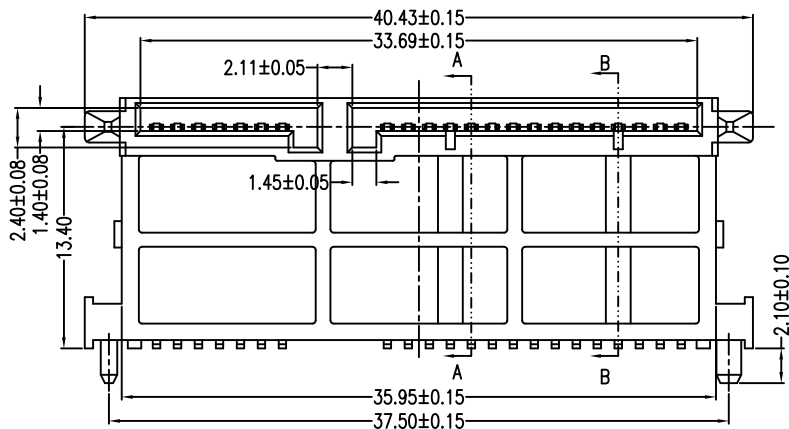
Current Rating: 1.5 Ampere per contact
 Contact Resistance: 30 mΩ max.
 Insulation Resistance: 1000 MΩ min.
 Dielectric Withstanding Voltage: 500 VAC

*Environmental

Operating Temperature: -55°C to +85°C

*How to order:

2SAT-022-R5S-08
 — Gold: F:Flash, 1:5u", 5:15u", 3:30u"
 — NO. of Contacts
 — Series No.



PCB LAYOUT(T=1.60mm)
 COMPONENT SIDE

| Units | mm | Scale | 2:1 | Drawing By | Data | SINGATRON U.S.A. | | | | |
|---|----|-------|-----|-------------|-----------|------------------------|-----------------|-------|---|--|
| Tolerance Unless Otherwise Specified | | | | May | 05/29-'13 | | | | | |
| .X | ~ | ±0.38 | | Reviewed By | Data | Date | 05/28-'13 | Title | SATA 7+15P Female Reverse SMT Type (H=15.15) | |
| .XX | ~ | ±0.25 | | Sharon | 05/29-'13 | Sheet | 1 of 1 | | | |
| .XXX | ~ | ±0.20 | | Approval By | Data | Third Angle Projection | | | | |
| Angle | ~ | ± 3° | | Jason | 06/03-'13 | Drawing No. | 2SAT-022-R5S-08 | REV | D | |