

REV.	ECN.NO.	DATE
A	RELEASED	10/15-'07
B	Add Material of Shell Add PIN1 Sign	11/03-'09
C	Modify Notes	03/15-'12

NOTES:

***Material**

Housing: PBT+30%G.F, UL 94V-0 Rated;
 Retainer: Nylon66+30%G.F, UL 94V-0 Rated;
 Contact: Brass, Au plating on contact area,
 Sn(100u" Min) Plating on solder tail,
 Ni(40u" Min) underplating over all;
 Shell(Outside): SPCC, Sn(100u" Min) plating over
 Nickel(40u" Min);
 Shell(Inside): SUS304.

***Mechanical**

Insertion Force: 4080g Max.
 Withdrawal Force: 1020g Min.
 Durability: 2500 cycles.

***Electrical Specification**

Operation Voltage:100V AC Max;
 Current Rating: 1.5 Ampere per contact;
 Contact Resistance: 30 mΩ Max;
 Insulation Resistance: 1000 MΩ Min;
 Dielectric Withstanding Voltage:500V AC.

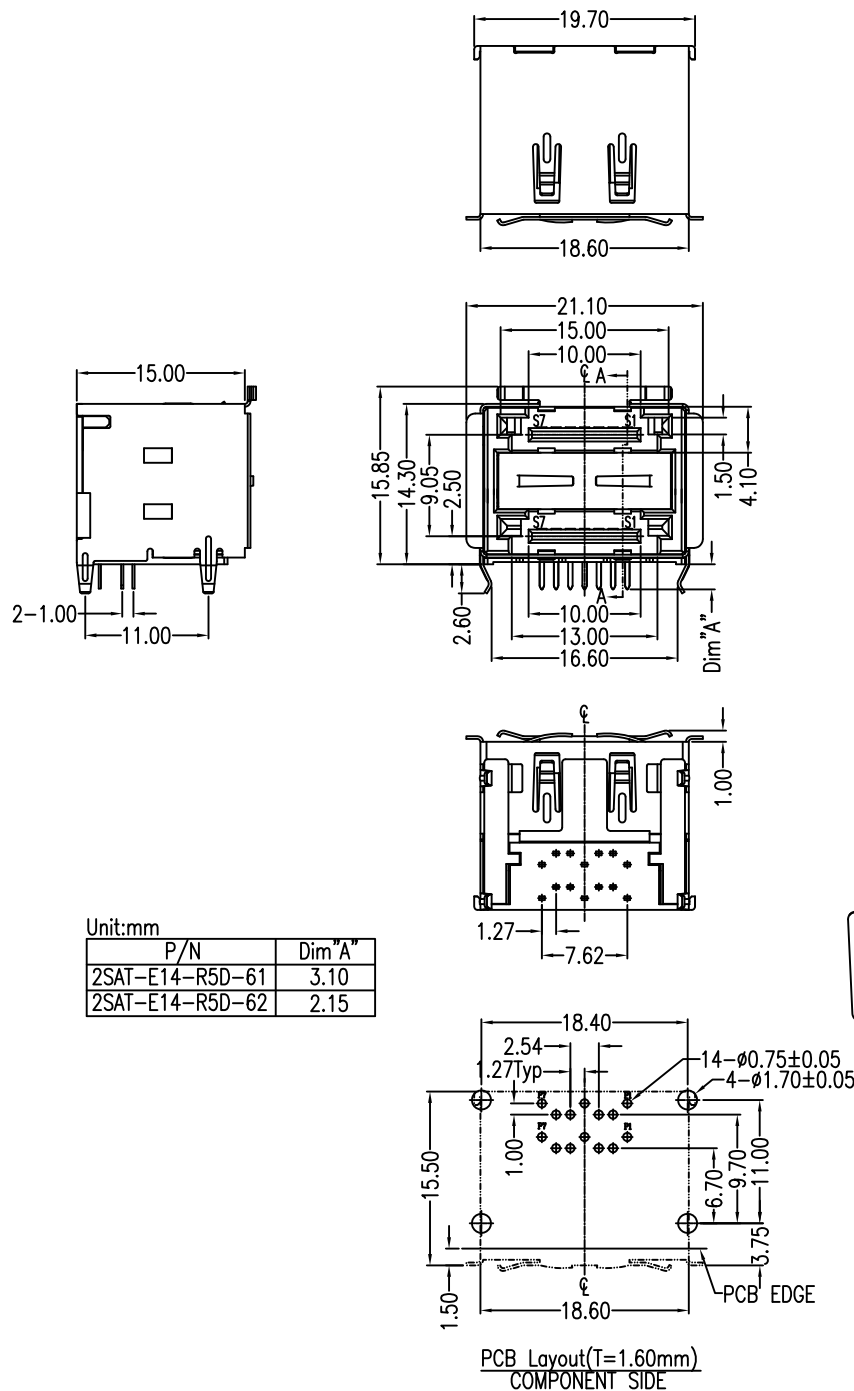
***Environmental**

Operating Temperature : -55°c to +85°c.

***How to order:**

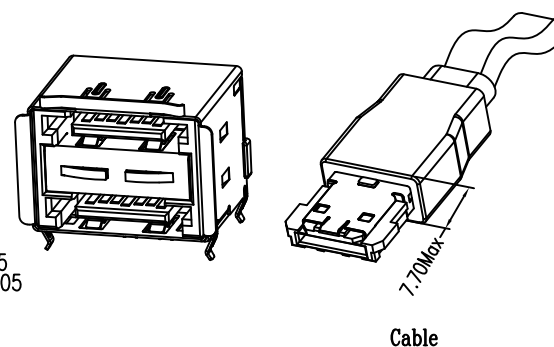
2SAT-E14-R5D-62
 1:DIP(3.10mm) 2:DIP(2.15mm)
 1:Black 5:Yellow(810C) 6:Red(185C)
 Gold F:Flash 5:15u" 3:30u"
 Number of contacts
 SATA Series

Signal Segment	
Name	Type
S1	GND
S2	A+
S3	A-
S4	GND
S5	B-
S6	B+
S7	GND



Unit:mm

P/N	Dim "A"
2SAT-E14-R5D-61	3.10
2SAT-E14-R5D-62	2.15



Units	mm	Scale	4:3	Drawing By	Data	SINGATRON U.S.A.			
Tolerance Unless Otherwise Specified				May	03/12-'12	Date 03/15-'12 Sheet 1 of 1 Title Double eSATA Male (Inside Elastic Plate Type)			
.X ~ ±0.38				Reviewed By	Data				
.XX ~ ±0.25				Sharon	03/12-'12	Third Angle Projection Drawing No. 2SAT-E14-R5D-62 REV C			
.XXX ~ ±0.20				Approval By	Data				
Angle ~ ± 3°				Jason	03/12-'12				