

| REV. | ECN.NO. | DATE |
|------|----------|-----------|
| A | RELEASED | 05/20-'05 |

NOTES:

***Material**

Body: LCP UL 94V-0 Rated, Color: Black

Contacts: Phosphor Bronze.

Plating: Gold Plating over Nickel on contact area;
Tin plating on solder tail.

***Electrical Specification**

Operation Voltage: 100 VAC max.

Current Rating: 1.5 Ampere per contact

Contact Resistance: 30 Milliohms max.

Insulation Resistance: 1000 Megohms min.

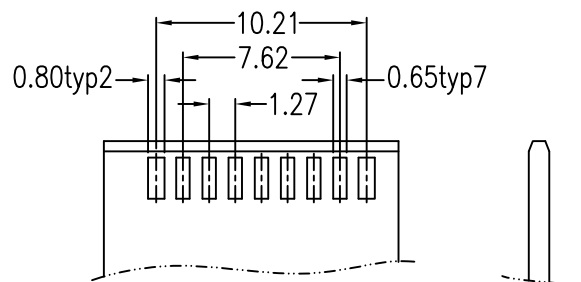
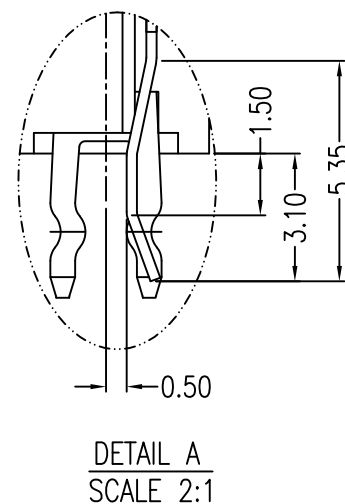
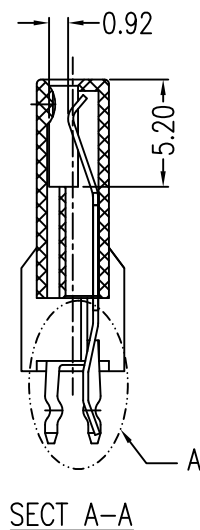
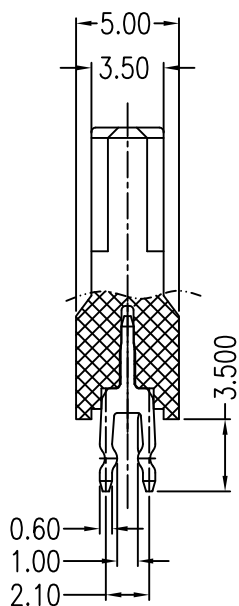
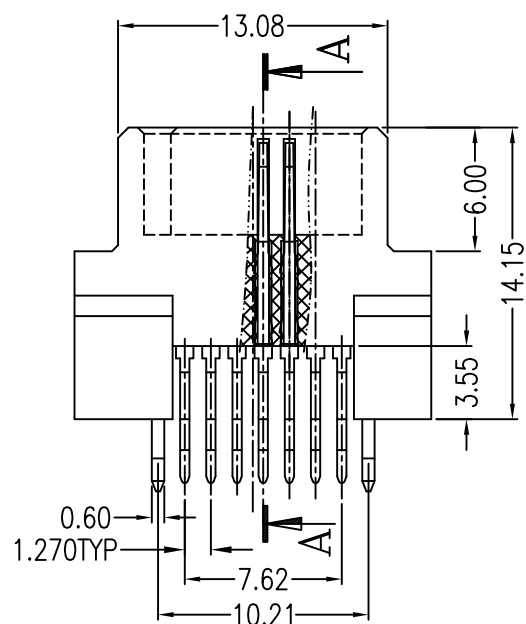
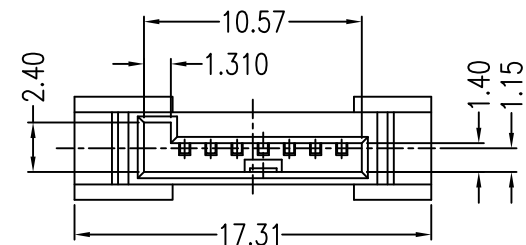
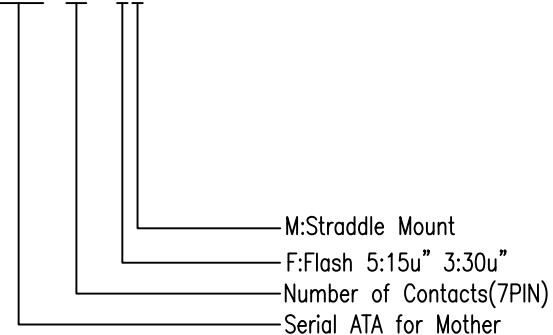
Dielectric Withstanding Voltage: 500 VAC

***Environmental**

Operating Temperature: -55°C ~ 125°C.

***How To Order**

2SAT-F07-V5M-00



| | | | | | | | | | | | |
|--------------------------------------|----|-------|-----|-------------|----------|------------------------|-----------|-------------|--------------------------------|-----|---|
| Units | mm | Scale | 3:1 | Drawing By | Data | SINGATRON U.S.A. | | | | | |
| Tolerance Unless Otherwise Specified | | | | Sharon | 05/20/05 | Date | 05/20-'05 | Title | SATA 7P Female (Straddle Type) | | |
| .X | ~ | ±0.38 | | Reviewed By | Data | Sheet | 1 of 1 | | | | |
| .XX | ~ | ±0.25 | | Jason | 05/20/05 | Third Angle Projection | | | | | |
| .XXX | ~ | ±0.20 | | Approval By | Data | | | | | | |
| Angle | ~ | ± 3° | | Jason | 05/20/05 | | | Drawing No. | 2SAT-F07-VxM-00 | REV | A |