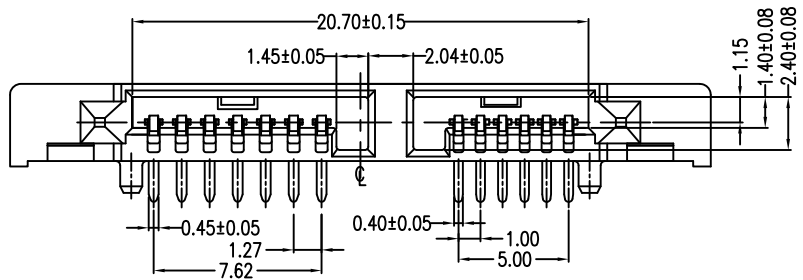


REV.	ECN.NO.	DATE
A	RELEASED	12/24/08



Pin Number	Signal Name	Pin Number	Power Line Designation
S1	GND	P1	DP
S2	A+	P2	+5V
S3	A-	P3	+5V
S4	GND	P4	MD
S5	B-	P5	GND
S6	B+	P6	GND
S7	GND		

Notes:

\*Material

- Housing: LCP, UL 94V-0 rated;
- Color: Black.
- Contact: Phosphor Bronze
- Plating: Gold Plating over Nickel on contact area, Tin plating on solder Tail.
- Screw: Zn Plating over Fe

\*Mechanical

- Insertion Force: 45N max.
- Withdrawal Force: 10N min.
- Durability: 500 cycles

\*Electrical Specification

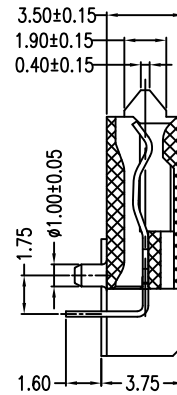
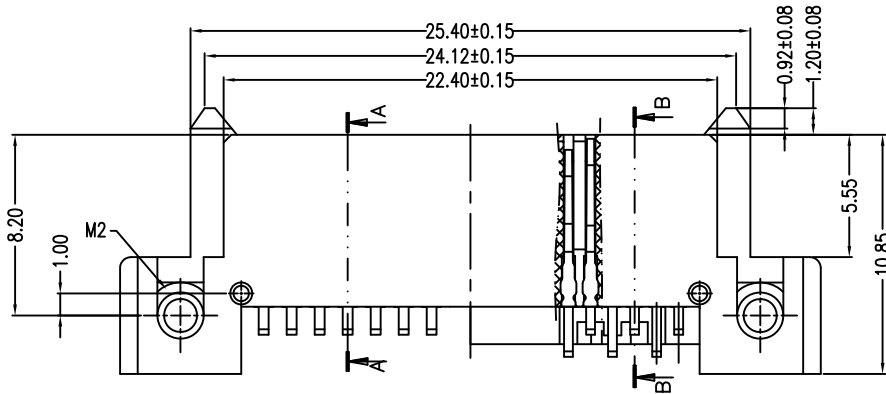
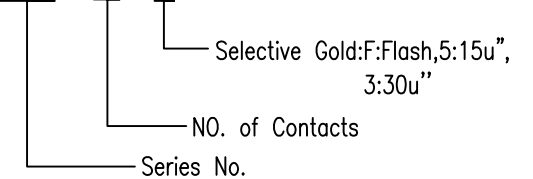
- Current Rating: 1.5 Ampere per contact
- Contact Resistance: 30 Milliohms max.
- Insulation Resistance: 1000 Megohms min.
- Dielectric Withstanding Voltage: 500 VAC

\*Environmental

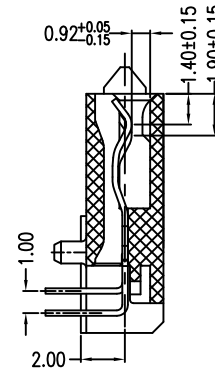
- Operating Temperature: -55°C to +85°C

\*How to Order:

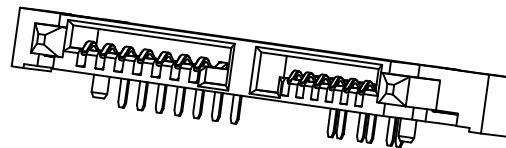
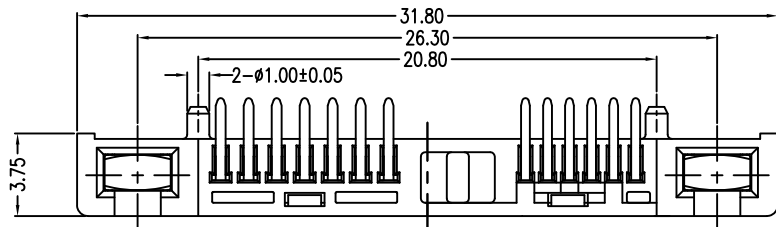
2SAT-F13-R5D-50



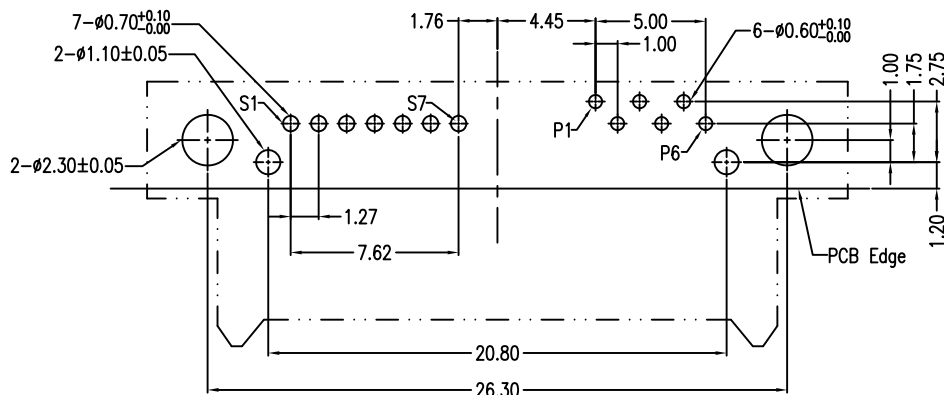
SEC A-A



SEC B-B



3D View



P.C.B Layout  
Top View (T=1.20)

Units	mm	Scale	8:3	Drawing By	Data	SINGATRON U.S.A.					
Tolerance Unless Otherwise Specified				Joan	12/24/08						
.X	~ ±0.38			Reviewed By	Data	Date	12/24/08	Title	SATA 7+6P 90° Reverse DIP(2Rows) Screw Type Female		
.XX	~ ±0.25			Sharon	12/24/08	Sheet	1 of 1				
.XXX	~ ±0.20			Approval By	Data	Third Angle Projection		Drawing No.	2SAT-F13-RxD-50	REV	A
Angle	~ ± 3°			Jason	12/24/08						