

Pin Number	Signal Name	Pin Number	Power Line Designation
S1	GND	P1	DP
S2	A+	P2	+5V
S3	A-	P3	+5V
S4	GND	P4	MD
S5	B-	P5	GND
S6	B+	P6	GND
S7	GND		

Notes:

*Material

Housing: LCP+50%G.F, UL 94V-0 rated;
 Color: Black.
 Contact: Phosphor Bronze
 Plating: Gold Plating over Nickel(40~80u") on contact area
 Tin plating(100~250u") on solder Tail.
 Screw: Fe Plating over Zn

*Mechanical

Insertion Force: 45N max.
 Withdrawal Force: 10N min.
 Durability: 500 cycles

*Electrical Specification

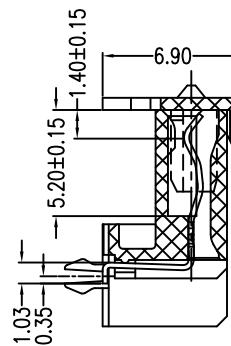
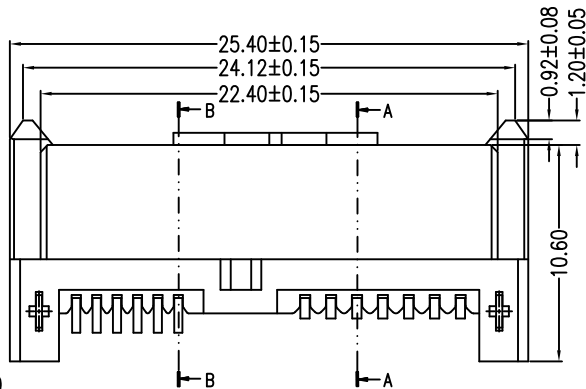
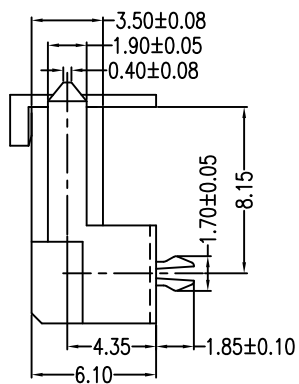
Current Rating: 1.5 Ampere per contact
 Contact Resistance: 30 mΩ max.
 Insulation Resistance: 1000 MΩ min.
 Dielectric Withstanding Voltage: 500 VAC

*Environmental

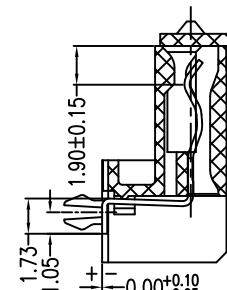
Operating Temperature: -55°C to +85°C

*How to Order:

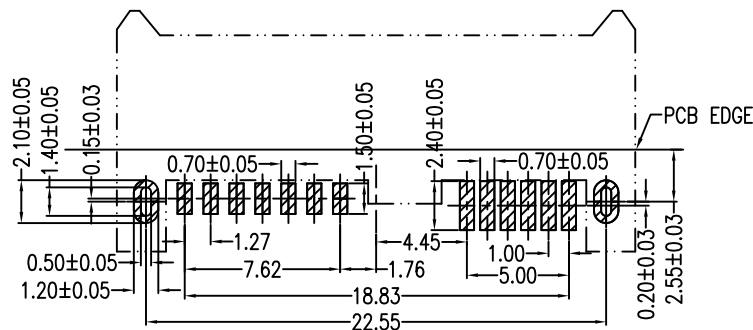
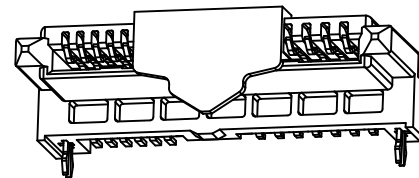
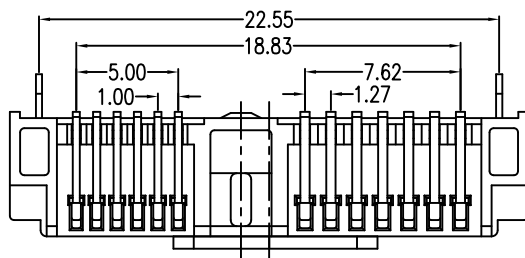
2SAT-F13-R5S-G0
 Gold:F:Flash,5:15u",3:30u"
 NO. of Contacts
 Series No.



SEC A-A



SEC B-B



PCB LAYOUT(T=1.20)
TOP VIEW

Units	mm	Scale	5:2	Drawing By	Data	SINGATRON U.S.A.				
Tolerance Unless Otherwise Specified				Mini	02/26/10	Date	02/26/10	Title	Slimline 7+6P SMT Type(6.10)	
.X	~	±0.38	Reviewed By	Data	Sheet	1 of 1				
.XX	~	±0.25	Sharon	02/26/10	Third Angle Projection	Drawing No.		2SAT-F13-R5S-G0	REV	A
.XXX	~	±0.20	Approval By	Data						
Angle	~	± 3°	Jason	02/26/10						