

REV.	ECN.NO.	DATE
A	RELEASED	06/25-'08
B	Change Harpoon and notes	01/09-'12
C	Mouthguard reinforced	11/28-'12

Notes:

***Material**

Housing: LCP+50%GF, UL 94V-0 rated;Color: Black.
 Contact: Phosphor Bronze
 Plating: Au Plating on contact area
 Sn(100u" Min) plating on solder Tail.
 Ni(40u" Min) contact underplating overall.
 Harpoon: Brass
 Plating: Sn(100u" Min) plating over Ni(40u" Min)

***Mechanical**

Insertion Force: 45N max.
 Withdrawal Force: 10N min.
 Durability: 500 cycles

***Electrical Specification**

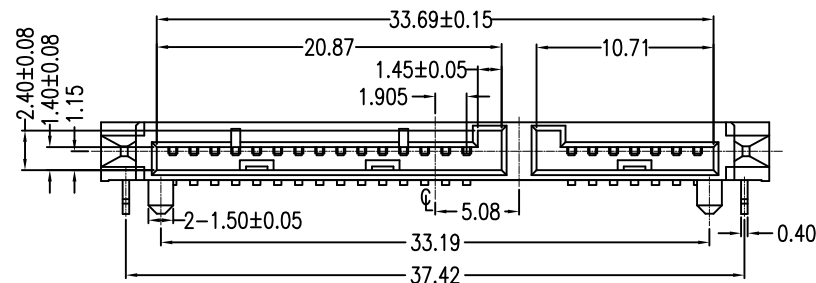
Current Rating: 1.5 Ampere per contact
 Contact Resistance: 30mΩ max.
 Insulation Resistance: 1000MΩ min.
 Dielectric Withstanding Voltage: 500 V AC

***Environmental**

Operating Temperature: -55°C to +85°C

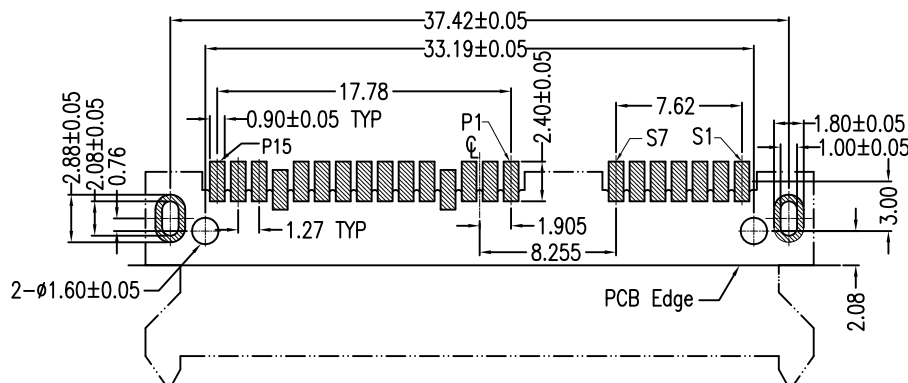
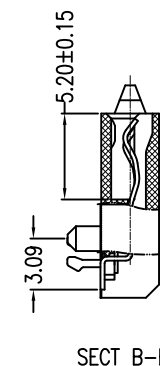
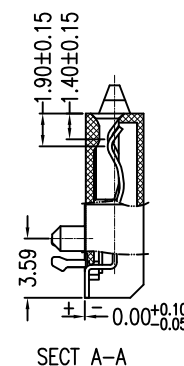
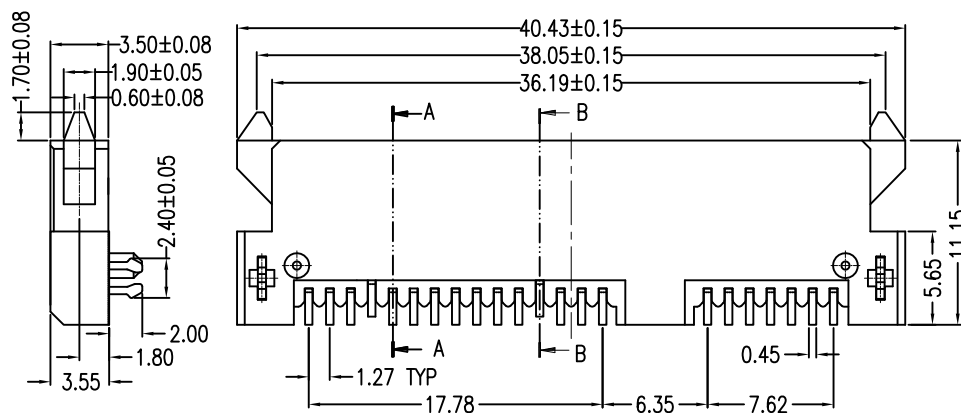
***How to order:**

2SAT-F22-R5S-20
 — Gold :F:>0.8u" 5:15u"
 — NO. of Contacts
 — Series No.

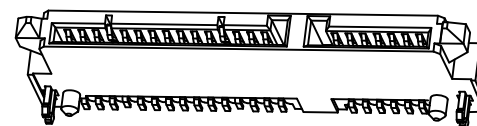


Signal Segment	
Name	Type
S1	GND
S2	A+
S3	A-
S4	GND
S5	B-
S6	B+
S7	GND

Power Segment	
Name	Type
P1	V33
P2	V33
P3	V33
P4	GND
P5	GND
P6	GND
P7	V5
P8	V5
P9	V5
P10	GND
P11	DAS/DSS
P12	GND
P13	V12
P14	V12
P15	V12



P.C.B LAYOUT (T=1.20mm)
 COMPONENT SIDE



Units	mm	Scale	2:1	Drawing By	Data	SINGATRON U.S.A.						
Tolerance Unless Otherwise Specified				Peter	12/12/12	Date		11/28-'12	Title	SATA 7+15P Female SMT Type (3.55)		
.X ~ ±0.38				Reviewed By	Data	Sheet	1 of 1					
.XX ~ ±0.25				Sharon	12/12/12	Third Angle Projection		Drawing No.	2SAT-F22-RxS-20		REV	C
.XXX ~ ±0.20				Approval By	Data							
Angle ~ ± 3°				Jason	12/12/12							